

## Product datasheet for **TA804606M**

### ErbB 4 (ERBB4) Mouse Monoclonal Antibody [Clone ID: OTI1H6]

#### Product data:

|                         |   |
|-------------------------|---|
| Product Type:           | Primary Antibodies  |
| Clone Name:             | OTI1H6  |
| Applications:           | IHC, WB   |
| Recommended Dilution:   | IHC 1:1000  |
| Reactivity:             | Human, Mouse, Rat   |
| Host:                   | Mouse   |
| Isotype:                | IgG2b   |
| Clonality:              | Monoclonal  |
| Immunogen:              | Human recombinant protein fragment corresponding to amino acids 992-1308 of human ERBB4 (NP_005226) produced in E.coli.   |
| Formulation:            | PBS (pH 7.3) containing 1% BSA, 50% glycerol and 0.02% sodium azide.  |
| Concentration:          | 1 mg/ml   |
| Purification:           | Purified from mouse ascites fluids or tissue culture supernatant by affinity chromatography (protein A/G)   |
| Conjugation:            | Unconjugated  |
| Storage:                | Store at -20°C as received.   |
| Stability:              | Stable for 12 months from date of receipt.  |
| Predicted Protein Size: | 144.2 kDa   |
| Gene Name:              | erb-b2 receptor tyrosine kinase 4   |
| Database Link:          | <a href="#">NP_005226</a><br><a href="#">Entrez Gene 13869 Mouse</a> <a href="#">Entrez Gene 59323 Rat</a> <a href="#">Entrez Gene 2066 Human</a><br><a href="#">Q15303</a> |



[View online »](#)

**Background:**

This gene is a member of the Tyr protein kinase family and the epidermal growth factor receptor subfamily. It encodes a single-pass type I membrane protein with multiple cysteine rich domains, a transmembrane domain, a tyrosine kinase domain, a phosphatidylinositol-3 kinase binding site and a PDZ domain binding motif. The protein binds to and is activated by neuregulins and other factors and induces a variety of cellular responses including mitogenesis and differentiation. Multiple proteolytic events allow for the release of a cytoplasmic fragment and an extracellular fragment. Mutations in this gene have been associated with cancer. Alternatively spliced variants which encode different protein isoforms have been described; however, not all variants have been fully characterized. [provided by RefSeq, Jul 2008]

**Synonyms:**

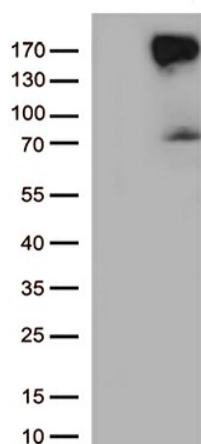
ALS19; HER4; p180erbB4

**Protein Families:**

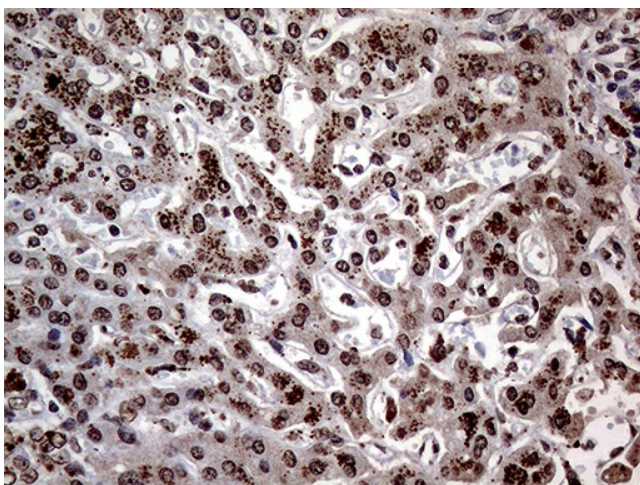
Druggable Genome, Protein Kinase, Transmembrane

**Protein Pathways:**

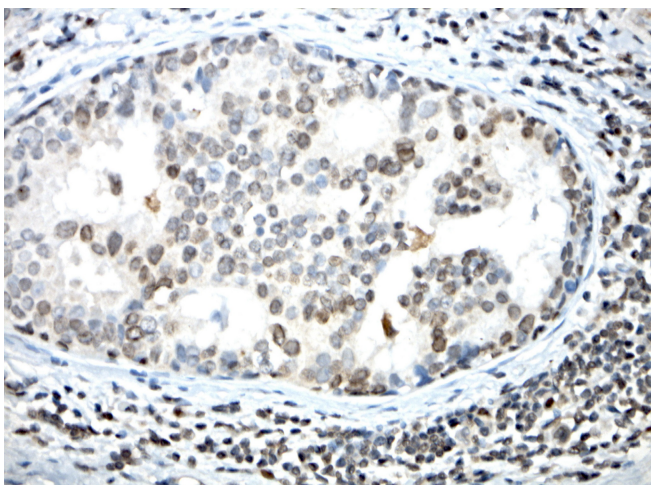
Calcium signaling pathway, Endocytosis, ErbB signaling pathway

**Product images:**


HEK293T cells were transfected with the pCMV6-ENTRY control (Left lane) or pCMV6-ENTRY ERBB4 ([RC220449], Right lane) cDNA for 48 hrs and lysed. Equivalent amounts of cell lysates (5 ug per lane) were separated by SDS-PAGE and immunoblotted with anti-ERBB4 (1:500).



Immunohistochemical staining of paraffin-embedded Carcinoma of Human liver tissue using anti-ERBB4 mouse monoclonal antibody. Heat-induced epitope retrieval by EDTA solution buffer pH 8.0 at 120°C for 3 min.



Immunohistochemical staining of paraffin-embedded breast cancer using ERBB4 antibody [TA804606] clone OTI1E7 mouse monoclonal antibody. Protocol used HIER TEE pH9.0 (cat# [B21-100]) and anti-ERBB4 at 1:100 dilution. Detection was done with Polink1 Broad Mouse and Rabbit C/N [D11-18] with DAB Kit. Image 40x magnification.