

## Product datasheet for **TA804601AM**

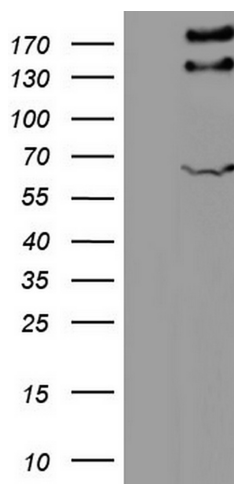
### GLI2 Mouse Monoclonal Antibody (Biotin conjugated) [Clone ID: OTI1G1]

#### Product data:

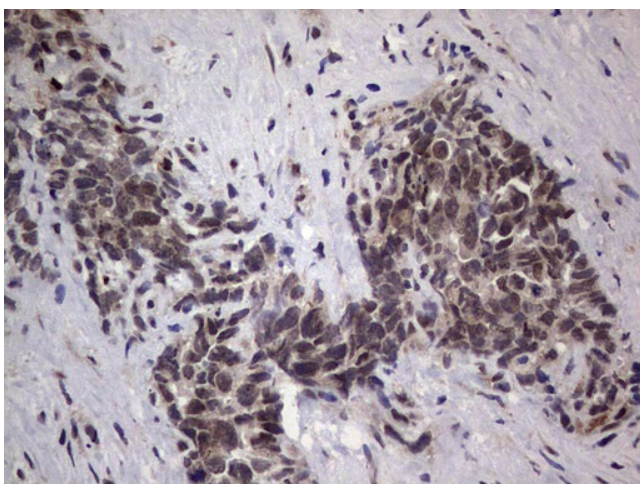
Product Type:	Primary Antibodies
Clone Name:	OTI1G1
Applications:	IHC, WB
Recommended Dilution:	WB 1:2000, IHC 1:150
Reactivity:	Human, Mouse
Host:	Mouse
Isotype:	IgG1
Clonality:	Monoclonal
Immunogen:	Human recombinant protein fragment corresponding to amino acids 729-1123 of human GLI2 (NP_005261) produced in E.coli.
Formulation:	PBS (pH 7.3) containing 1% BSA, 50% glycerol and 0.02% sodium azide.
Concentration:	0.5 mg/ml
Purification:	Purified from mouse ascites fluids or tissue culture supernatant by affinity chromatography (protein A/G)
Conjugation:	Biotin
Storage:	Store at -20°C as received.
Stability:	Stable for 12 months from date of receipt.
Predicted Protein Size:	167.6 kDa
Gene Name:	GLI family zinc finger 2
Database Link:	<a href="#">NP_005261</a> <a href="#">Entrez Gene 14633 Mouse</a> <a href="#">Entrez Gene 2736 Human</a> <a href="#">P10070</a>
Synonyms:	CJS; HPE9; PHS2; THP1; THP2
Protein Families:	Adult stem cells, Cancer stem cells, Druggable Genome, Embryonic stem cells, ES Cell Differentiation/IPS
Protein Pathways:	Basal cell carcinoma, Hedgehog signaling pathway, Pathways in cancer



[View online »](#)

**Product images:**

HEK293T cells were transfected with the pCMV6-ENTRY control (Left lane) or pCMV6-ENTRY GLI2 ([RC217291], Right lane) cDNA for 48 hrs and lysed. Equivalent amounts of cell lysates (5 ug per lane) were separated by SDS-PAGE and immunoblotted with anti-GLI2. Positive lysates [LY417413] (100ug) and [LC417413] (20ug) can be purchased separately from OriGene.



Immunohistochemical staining of paraffin-embedded Human testicular cancer tissue using anti-GLI2 mouse monoclonal antibody. (Heat-induced epitope retrieval by 1mM EDTA in 10mM Tris, pH8.5, 120°C for 3min, [TA804601])