

## Product datasheet for **TA804590AM**

### Adiponectin (ADIPOQ) Mouse Monoclonal Antibody (Biotin conjugated) [Clone ID: OTI1G4]

#### Product data:

Product Type:	Primary Antibodies
Clone Name:	OTI1G4
Applications:	IHC, WB
Recommended Dilution:	WB 1:2000, IHC 1:150
Reactivity:	Human
Host:	Mouse
Isotype:	IgG1
Clonality:	Monoclonal
Immunogen:	Human recombinant protein fragment corresponding to amino acids 19-244 of human ADIPOQ (NP_001171271) produced in SF9 cell.
Formulation:	PBS (pH 7.3) containing 1% BSA, 50% glycerol and 0.02% sodium azide.
Concentration:	0.5 mg/ml
Purification:	Purified from mouse ascites fluids or tissue culture supernatant by affinity chromatography (protein A/G)
Conjugation:	Biotin
Storage:	Store at -20°C as received.
Stability:	Stable for 12 months from date of receipt.
Gene Name:	adiponectin, C1Q and collagen domain containing
Database Link:	<a href="#">NP_001171271</a> <a href="#">Entrez Gene 9370 Human</a> <a href="#">Q15848</a>
Background:	This gene is expressed in adipose tissue exclusively. It encodes a protein with similarity to collagens X and VIII and complement factor C1q. The encoded protein circulates in the plasma and is involved with metabolic and hormonal processes. Mutations in this gene are associated with adiponectin deficiency. Multiple alternatively spliced variants, encoding the same protein, have been identified. [provided by RefSeq, Apr 2010]
Synonyms:	ACDC; ACRP30; ADIPQTL1; ADPN; APM-1; APM1; GBP28

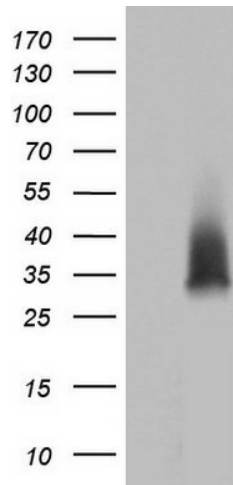


[View online »](#)

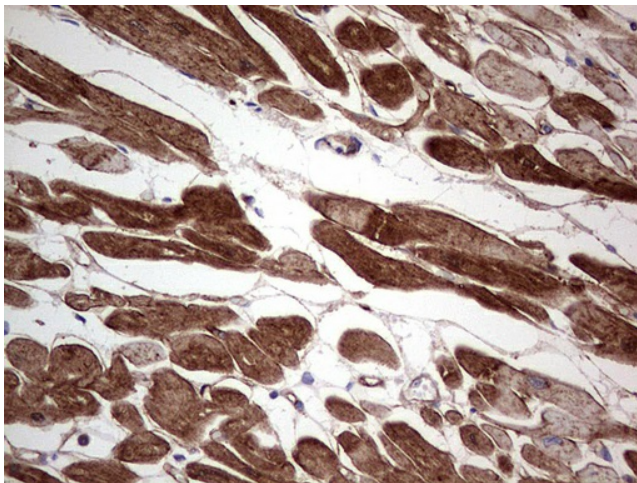
**Protein Families:** Druggable Genome, Secreted Protein

**Protein Pathways:** Adipocytokine signaling pathway, PPAR signaling pathway, Type II diabetes mellitus

**Product images:**



HEK293T cells were transfected with the pCMV6-ENTRY control (Left lane) or pCMV6-ENTRY ADIPOQ ([RC229756], Right lane) cDNA for 48 hrs and lysed. Equivalent amounts of cell lysates (5 ug per lane) were separated by SDS-PAGE and immunoblotted with anti-ADIPOQ. Positive lysates [LY432756] (100ug) and [LC432756] (20ug) can be purchased separately from OriGene.



Immunohistochemical staining of paraffin-embedded Human adult heart tissue using anti-ADIPOQ mouse monoclonal antibody. (Heat-induced epitope retrieval by 1mM EDTA in 10mM Tris, pH8.5, 120°C for 3min, [TA804590])