

## Product datasheet for **TA804585BM**

### ADAMTS1 Mouse Monoclonal Antibody (HRP conjugated) [Clone ID: OTI4E3]

#### Product data:

Product Type:	Primary Antibodies
Clone Name:	OTI4E3
Applications:	IHC, WB
Recommended Dilution:	WB 1:2000, IHC 1:150
Reactivity:	Human
Host:	Mouse
Isotype:	IgG2a
Clonality:	Monoclonal
Immunogen:	Human recombinant protein fragment corresponding to amino acids 412-644 of human ADAMTS1 (NP_008919) produced in E.coli.
Formulation:	PBS (pH 7.3) containing 1% BSA, 50% glycerol.
Concentration:	0.5 mg/ml
Purification:	Purified from mouse ascites fluids or tissue culture supernatant by affinity chromatography (protein A/G)
Conjugation:	HRP
Storage:	Store at -20°C as received.
Stability:	Stable for 12 months from date of receipt.
Predicted Protein Size:	100.3 kDa
Gene Name:	ADAM metalloproteinase with thrombospondin type 1 motif 1
Database Link:	<a href="#">NP_008919</a> <a href="#">Entrez Gene 9510 Human</a> <a href="#">Q9UHI8</a>



[View online »](#)

**Background:**

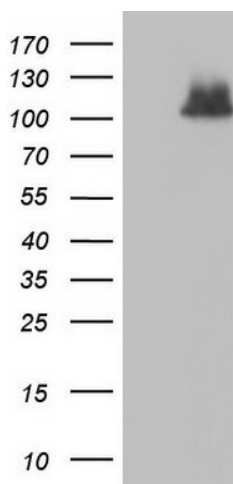
This gene encodes a member of the ADAMTS (a disintegrin and metalloproteinase with thrombospondin motif) protein family. Members of the family share several distinct protein modules, including a propeptide region, a metalloproteinase domain, a disintegrin-like domain, and a thrombospondin type 1 (TS) motif. Individual members of this family differ in the number of C-terminal TS motifs, and some have unique C-terminal domains. The protein encoded by this gene contains two disintegrin loops and three C-terminal TS motifs and has anti-angiogenic activity. The expression of this gene may be associated with various inflammatory processes as well as development of cancer cachexia. This gene is likely to be necessary for normal growth, fertility, and organ morphology and function. [provided by RefSeq, Jul 2008]

**Synonyms:**

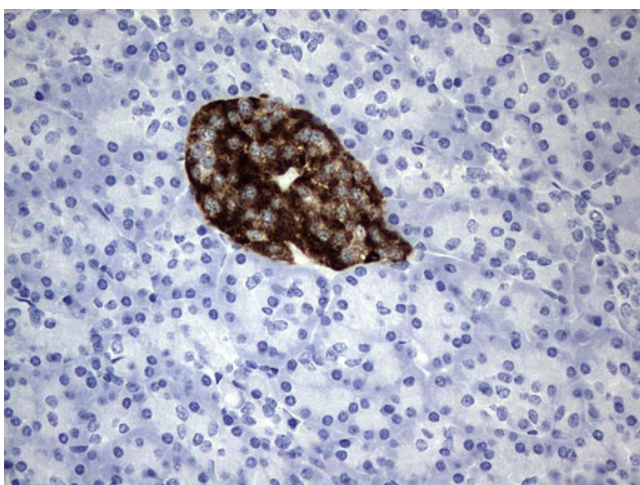
C3-C5; METH1

**Protein Families:**

Druggable Genome, Protease, Secreted Protein

**Product images:**

HEK293T cells were transfected with the pCMV6-ENTRY control (Cat# [PS100001], Left lane) or pCMV6-ENTRY ADAMTS1 (Cat# [RC205984], Right lane) cDNA for 48 hrs and lysed. Equivalent amounts of cell lysates (5 ug per lane) were separated by SDS-PAGE and immunoblotted with anti-ADAMTS1 (Cat# [TA804585]). Positive lysates [LY416271] (100ug) and [LC416271] (20ug) can be purchased separately from OriGene.



Immunohistochemical staining of paraffin-embedded Human pancreas tissue within the normal limits using anti-ADAMTS1 mouse monoclonal antibody. (Heat-induced epitope retrieval by 1mM EDTA in 10mM Tris, pH8.5, 120°C for 3min, [TA804585])