

## Product datasheet for **TA804572S**

### ATP5PO Mouse Monoclonal Antibody [Clone ID: OTI2E9]

#### Product data:

Product Type:	Primary Antibodies
Clone Name:	OTI2E9
Applications:	IHC, WB
Recommended Dilution:	WB 1:2000, IHC 1:150
Reactivity:	Human
Host:	Mouse
Isotype:	IgG1
Clonality:	Monoclonal
Immunogen:	Human recombinant protein fragment corresponding to amino acids 24-213 of human ATP5O (NP_001688) produced in E.coli.
Formulation:	PBS (pH 7.3) containing 1% BSA, 50% glycerol and 0.02% sodium azide.
Concentration:	1 mg/ml
Purification:	Purified from mouse ascites fluids or tissue culture supernatant by affinity chromatography (protein A/G)
Conjugation:	Unconjugated
Storage:	Store at -20°C as received.
Stability:	Stable for 12 months from date of receipt.
Predicted Protein Size:	20.8 kDa
Gene Name:	ATP synthase, H <sup>+</sup> transporting, mitochondrial F1 complex, O subunit
Database Link:	<a href="#">NP_001688</a> <a href="#">Entrez Gene 539 Human</a> <a href="#">P48047</a>
Background:	The protein encoded by this gene is a component of the F-type ATPase found in the mitochondrial matrix. F-type ATPases are composed of a catalytic core and a membrane proton channel. The encoded protein appears to be part of the connector linking these two components and may be involved in transmission of conformational changes or proton conductance. [provided by RefSeq, Jul 2008]

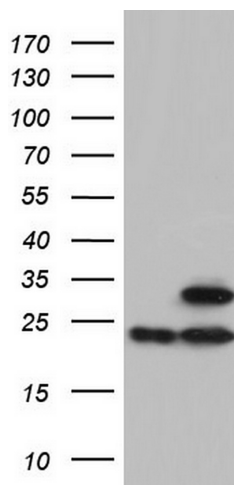


[View online »](#)

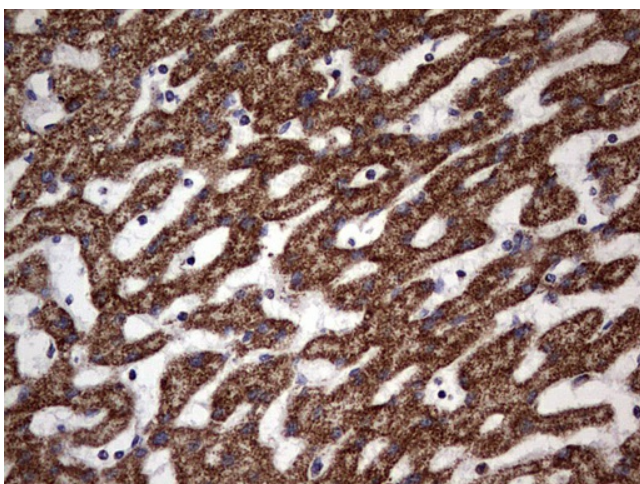
**Synonyms:** ATP5O; HMC08D05; OSCP

**Protein Pathways:** Alzheimer's disease, Huntington's disease, Metabolic pathways, Oxidative phosphorylation, Parkinson's disease

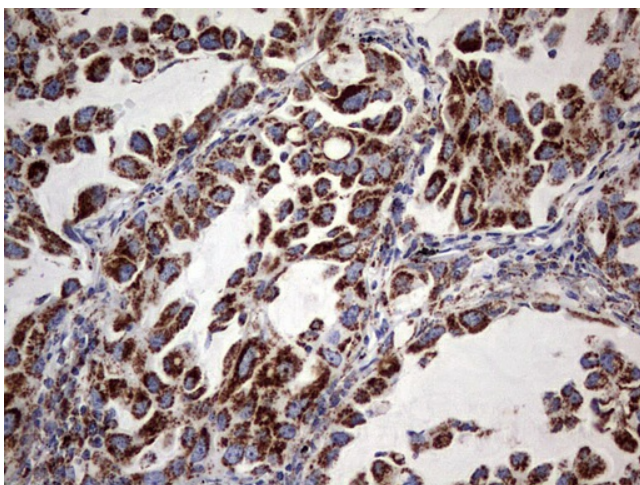
### Product images:



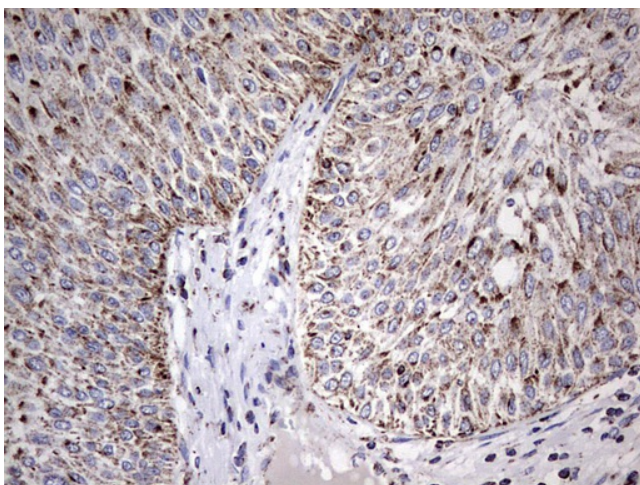
HEK293T cells were transfected with the pCMV6-ENTRY control (Cat# [PS100001], Left lane) or pCMV6-ENTRY ATP5O (Cat# [RC204991], Right lane) cDNA for 48 hrs and lysed. Equivalent amounts of cell lysates (5 ug per lane) were separated by SDS-PAGE and immunoblotted with anti-ATP5O (Cat# [TA804572]). Positive lysates [LY419797] (100ug) and [LC419797] (20ug) can be purchased separately from OriGene.



Immunohistochemical staining of paraffin-embedded Human liver tissue within the normal limits using anti-ATP5O mouse monoclonal antibody. (Heat-induced epitope retrieval by 1mM EDTA in 10mM Tris, pH8.5, 120°C for 3min, [TA804572])



Immunohistochemical staining of paraffin-embedded Carcinoma of Human lung tissue using anti-ATP5O mouse monoclonal antibody. (Heat-induced epitope retrieval by 1mM EDTA in 10mM Tris, pH8.5, 120°C for 3min, [TA804572])



Immunohistochemical staining of paraffin-embedded Carcinoma of Human bladder tissue using anti-ATP5O mouse monoclonal antibody. (Heat-induced epitope retrieval by 1mM EDTA in 10mM Tris, pH8.5, 120°C for 3min, [TA804572])