

Product datasheet for **TA804571AM**

NIPP1 (PPP1R8) Mouse Monoclonal Antibody (Biotin conjugated) [Clone ID: OTI1E9]

Product data:

Product Type:	Primary Antibodies
Clone Name:	OTI1E9
Applications:	WB
Recommended Dilution:	WB 1:2000
Reactivity:	Human, Mouse, Rat
Host:	Mouse
Isotype:	IgG1
Clonality:	Monoclonal
Immunogen:	Human recombinant protein fragment corresponding to amino acids 1-225 of human PPP1R8 (NP_612568) produced in E.coli.
Formulation:	PBS (pH 7.3) containing 1% BSA, 50% glycerol and 0.02% sodium azide.
Concentration:	0.5 mg/ml
Purification:	Purified from mouse ascites fluids or tissue culture supernatant by affinity chromatography (protein A/G)
Conjugation:	Biotin
Storage:	Store at -20°C as received.
Stability:	Stable for 12 months from date of receipt.
Predicted Protein Size:	22.5 kDa
Gene Name:	protein phosphatase 1 regulatory subunit 8
Database Link:	NP_612568 Entrez Gene 100336 Mouse Entrez Gene 313030 Rat Entrez Gene 5511 Human Q12972
Background:	This gene, through alternative splicing, encodes three different isoforms. Two of the protein isoforms encoded by this gene are specific inhibitors of type 1 serine/threonine protein phosphatases and can bind but not cleave RNA. The third protein isoform lacks the phosphatase inhibitory function but is a single-strand endoribonuclease comparable to RNase E of E. coli. This isoform requires magnesium for its function and cleaves specific sites in A+U-rich regions of RNA. [provided by RefSeq, Jul

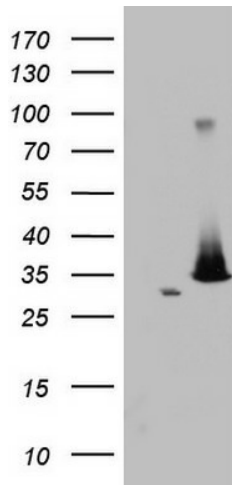


[View online »](#)

Synonyms: ARD-1; ARD1; NIPP-1; NIPP1; PRO2047

Protein Families: Druggable Genome, Transcription Factors

Product images:



HEK293T cells were transfected with the pCMV6-ENTRY control (Left lane) or pCMV6-ENTRY PPP1R8 ([RC210575], Right lane) cDNA for 48 hrs and lysed. Equivalent amounts of cell lysates (5 ug per lane) were separated by SDS-PAGE and immunoblotted with anti-PPP1R8. Positive lysates [LY408577] (100ug) and [LC408577] (20ug) can be purchased separately from OriGene.