

Product datasheet for **TA804559BM**

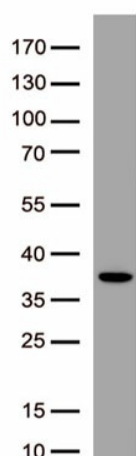
CD39 (ENTPD1) Mouse Monoclonal Antibody (HRP conjugated) [Clone ID: OTI2B10]

Product data:

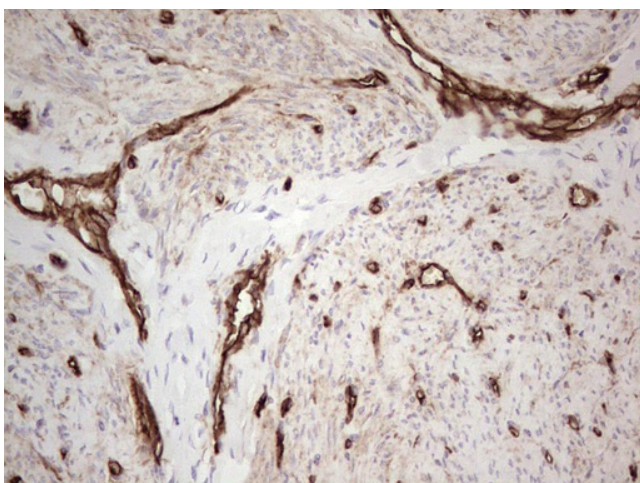
| | |
|-----------------------|--|
| Product Type: | Primary Antibodies |
| Clone Name: | OTI2B10 |
| Applications: | IHC, WB |
| Recommended Dilution: | WB 1:2000, IHC 1:150 |
| Reactivity: | Human |
| Host: | Mouse |
| Isotype: | IgG1 |
| Clonality: | Monoclonal |
| Immunogen: | Human recombinant protein fragment corresponding to amino acids 38-307 of human ENTPD1 (NP_001767) produced in E.coli. |
| Formulation: | PBS (pH 7.3) containing 1% BSA, 50% glycerol. |
| Concentration: | 0.5 mg/ml |
| Purification: | Purified from mouse ascites fluids or tissue culture supernatant by affinity chromatography (protein A/G) |
| Conjugation: | HRP |
| Storage: | Store at -20°C as received. |
| Stability: | Stable for 12 months from date of receipt. |
| Gene Name: | ectonucleoside triphosphate diphosphohydrolase 1 |
| Database Link: | NP_001767 Entrez Gene 953 Human P49961 |
| Synonyms: | ATPDase; CD39; NTPDase-1; SPG64 |
| Protein Families: | Transmembrane |
| Protein Pathways: | Purine metabolism, Pyrimidine metabolism |



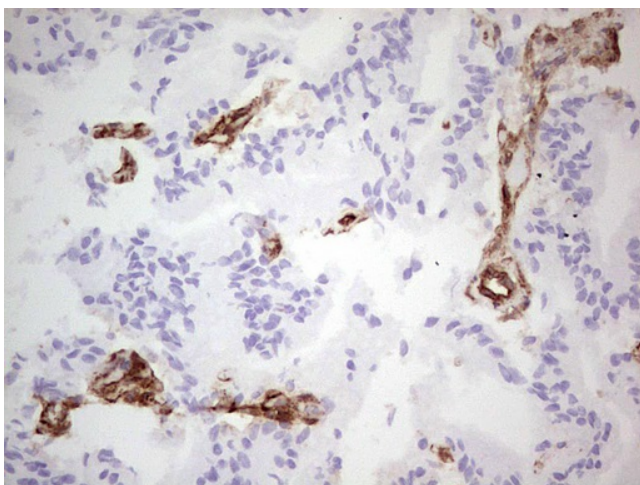
[View online »](#)

Product images:

Western blot analysis of recombinant ENTPD1 protein (0.05ug) by using ENTPD1 Mouse Monoclonal Antibody ([TA804559]).



Immunohistochemical staining of paraffin-embedded Adenocarcinoma of Human endometrium tissue using anti-ENTPD1 mouse monoclonal antibody. (Heat-induced epitope retrieval by 1mM EDTA in 10mM Tris, pH8.5, 120°C for 3min, [TA804559])



Immunohistochemical staining of paraffin-embedded Carcinoma of Human prostate tissue using anti-ENTPD1 mouse monoclonal antibody. (Heat-induced epitope retrieval by 1mM EDTA in 10mM Tris, pH8.5, 120°C for 3min, [TA804559])