

## Product datasheet for **TA804532AM**

### Factor H (CFH) Mouse Monoclonal Antibody (Biotin conjugated) [Clone ID: OTI5H5]

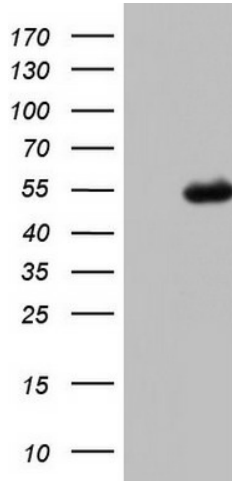
#### Product data:

Product Type:	Primary Antibodies
Clone Name:	OTI5H5
Applications:	WB
Recommended Dilution:	WB 1:2000
Reactivity:	Human
Host:	Mouse
Isotype:	IgG2b
Clonality:	Monoclonal
Immunogen:	Human recombinant protein fragment corresponding to amino acids 125-346 of human CFH (NP_001014975) produced in E.coli.
Formulation:	PBS (pH 7.3) containing 1% BSA, 50% glycerol and 0.02% sodium azide.
Concentration:	0.5 mg/ml
Purification:	Purified from mouse ascites fluids or tissue culture supernatant by affinity chromatography (protein A/G)
Conjugation:	Biotin
Storage:	Store at -20°C as received.
Stability:	Stable for 12 months from date of receipt.
Predicted Protein Size:	48.9 kDa
Gene Name:	complement factor H
Database Link:	<a href="#">NP_001014975</a> <a href="#">Entrez Gene 3075 Human</a> <a href="#">P08603</a>
Synonyms:	AHUS1; AMBP1; ARMD4; ARMS1; CFHL3; FH; FHL1; HF; HF1; HF2; HUS
Protein Families:	Druggable Genome, Secreted Protein
Protein Pathways:	Complement and coagulation cascades



[View online »](#)

**Product images:**



HEK293T cells were transfected with the pCMV6-ENTRY control (Cat# [PS100001], Left lane) or pCMV6-ENTRY CFH (Cat# [RC220772], Right lane) cDNA for 48 hrs and lysed. Equivalent amounts of cell lysates (5 ug per lane) were separated by SDS-PAGE and immunoblotted with anti-CFH(Cat# [TA804532]). Positive lysates [LY423097] (100ug) and [LC423097] (20ug) can be purchased separately from OriGene.