

## Product datasheet for **TA804522**

### TFF1 Mouse Monoclonal Antibody [Clone ID: OTI7B12]

#### Product data:

Product Type:	Primary Antibodies
Clone Name:	OTI7B12
Applications:	IHC
Recommended Dilution:	IHC 1:150
Reactivity:	Human
Host:	Mouse
Isotype:	IgG1
Clonality:	Monoclonal
Immunogen:	Human recombinant protein fragment corresponding to amino acids 25-84 of human TFF1 (NP_003216) produced in E.coli.
Formulation:	PBS (pH 7.3) containing 1% BSA, 50% glycerol and 0.02% sodium azide.
Concentration:	1 mg/ml
Purification:	Purified from mouse ascites fluids or tissue culture supernatant by affinity chromatography (protein A/G)
Conjugation:	Unconjugated
Storage:	Store at -20°C as received.
Stability:	Stable for 12 months from date of receipt.
Predicted Protein Size:	9.15 kDa
Gene Name:	trefoil factor 1
Database Link:	<a href="#">NP_003216</a> <a href="#">Entrez Gene 7031 Human</a> <a href="#">P04155</a>



[View online »](#)

**Background:**

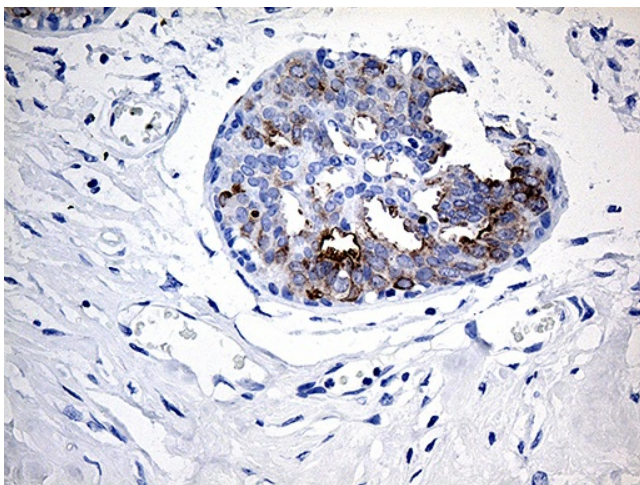
Members of the trefoil family are characterized by having at least one copy of the trefoil motif, a 40-amino acid domain that contains three conserved disulfides. They are stable secretory proteins expressed in gastrointestinal mucosa. Their functions are not defined, but they may protect the mucosa from insults, stabilize the mucus layer, and affect healing of the epithelium. This gene, which is expressed in the gastric mucosa, has also been studied because of its expression in human tumors. This gene and two other related trefoil family member genes are found in a cluster on chromosome 21. [provided by RefSeq, Jul 2008]

**Synonyms:**

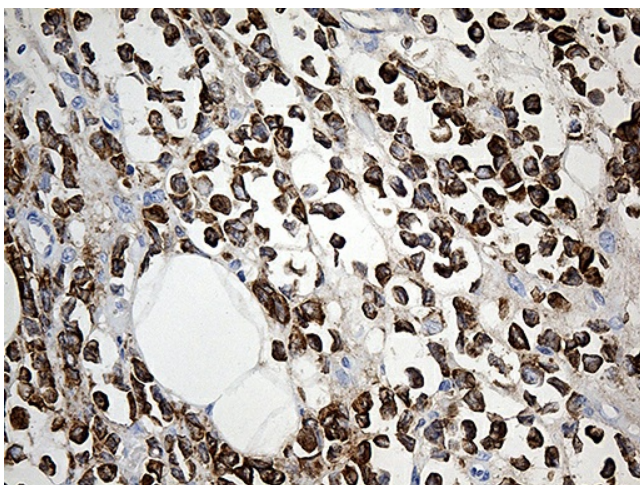
BCEI; D21S21; HP1.A; HPS2; pNR-2; pS2

**Protein Families:**

Druggable Genome, Secreted Protein

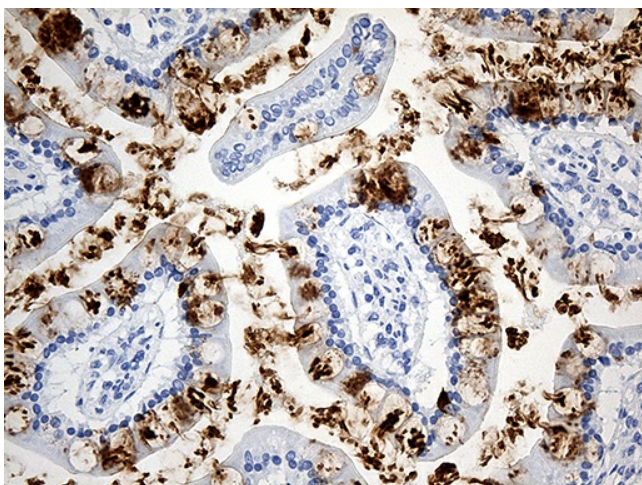
**Product images:**

Immunohistochemical staining of paraffin-embedded Human breast tissue within the normal limits using anti-TFF1 mouse monoclonal antibody. (Heat-induced epitope retrieval by 1mM EDTA in 10mM Tris buffer (pH8.5) at 120°C for 3min, TA804522) (1:150)

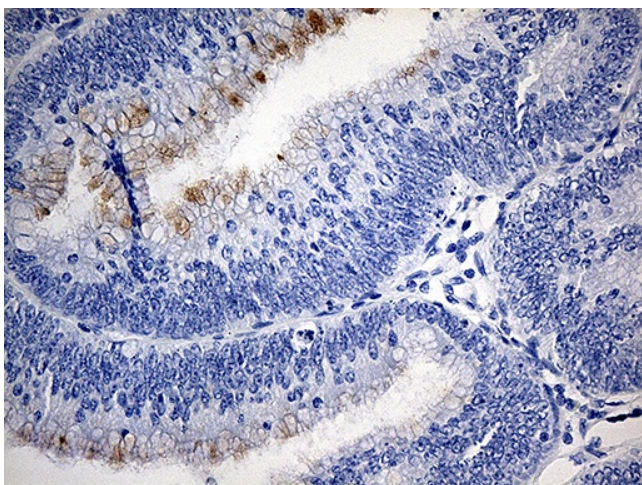


Immunohistochemical staining of paraffin-embedded Adenocarcinoma of Human breast tissue tissue using anti-TFF1 mouse monoclonal antibody. (Heat-induced epitope retrieval by 1mM EDTA in 10mM Tris buffer (pH8.5) at 120°C for 3min, TA804522) (1:150)

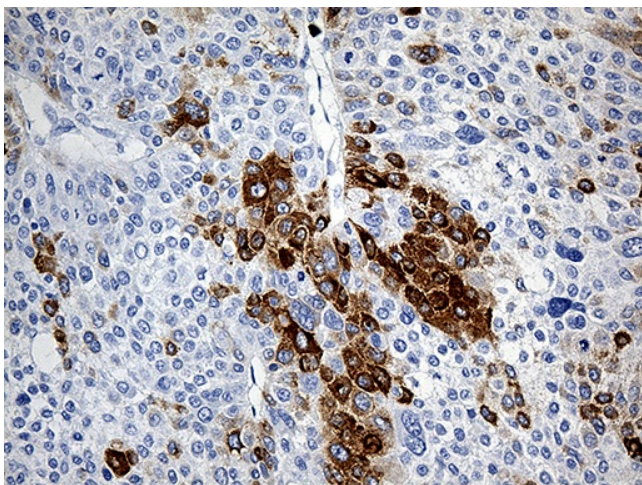




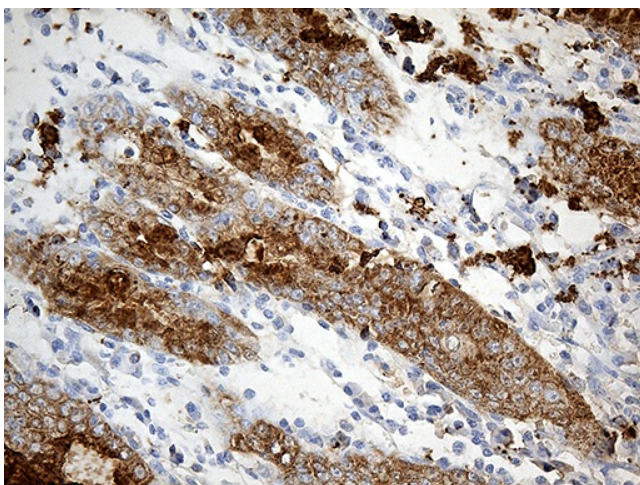
Immunohistochemical staining of paraffin-embedded Human colon tissue within the normal limits using anti-TFF1 mouse monoclonal antibody. (Heat-induced epitope retrieval by 1mM EDTA in 10mM Tris buffer (pH8.5) at 120°C for 3min, TA804522) (1:150)



Immunohistochemical staining of paraffin-embedded Adenocarcinoma of Human colon tissue using anti-TFF1 mouse monoclonal antibody. (Heat-induced epitope retrieval by 1mM EDTA in 10mM Tris buffer (pH8.5) at 120°C for 3min, TA804522) (1:150)



Immunohistochemical staining of paraffin-embedded Carcinoma of Human liver tissue using anti-TFF1 mouse monoclonal antibody. (Heat-induced epitope retrieval by 1mM EDTA in 10mM Tris buffer (pH8.5) at 120°C for 3min, TA804522) (1:150)



Immunohistochemical staining of paraffin-embedded Human gastric tissue within the normal limits using anti-TFF1 mouse monoclonal antibody. (Heat-induced epitope retrieval by 1mM EDTA in 10mM Tris buffer (pH8.5) at 120°C for 3min, TA804522) (1:150)