

## Product datasheet for **TA804517**

### DCC Mouse Monoclonal Antibody [Clone ID: OTI5D10]

#### Product data:

Product Type:	Primary Antibodies
Clone Name:	OTI5D10
Applications:	WB
Recommended Dilution:	WB 1:2000
Reactivity:	Human, Mouse, Rat
Host:	Mouse
Isotype:	IgG1
Clonality:	Monoclonal
Immunogen:	Full length human recombinant protein of human DCC (NP_005206) produced in HEK293T cell.
Formulation:	PBS (pH 7.3) containing 1% BSA, 50% glycerol and 0.02% sodium azide.
Concentration:	1 mg/ml
Purification:	Purified from mouse ascites fluids or tissue culture supernatant by affinity chromatography (protein A/G)
Conjugation:	Unconjugated
Storage:	Store at -20°C as received.
Stability:	Stable for 12 months from date of receipt.
Predicted Protein Size:	158.3 kDa
Gene Name:	DCC netrin 1 receptor
Database Link:	<a href="#">NP_005206</a> <a href="#">Entrez Gene 13176 Mouse</a> <a href="#">Entrez Gene 25311 Rat</a> <a href="#">Entrez Gene 1630 Human</a> <a href="#">P43146</a>



[View online »](#)

**Background:**

This gene encodes a netrin 1 receptor. The transmembrane protein is a member of the immunoglobulin superfamily of cell adhesion molecules, and mediates axon guidance of neuronal growth cones towards sources of netrin 1 ligand. The cytoplasmic tail interacts with the tyrosine kinases Src and focal adhesion kinase (FAK, also known as PTK2) to mediate axon attraction. The protein partially localizes to lipid rafts, and induces apoptosis in the absence of ligand. The protein functions as a tumor suppressor, and is frequently mutated or downregulated in colorectal cancer and esophageal carcinoma. [provided by RefSeq, Oct 2009]

**Synonyms:**

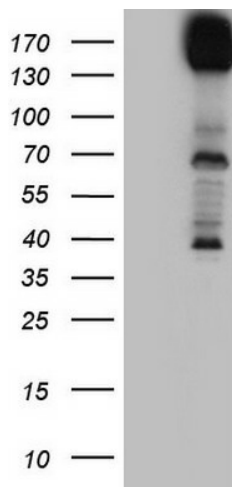
CRC18; CRCR1; IGDC1; MRMV1; NTN1R1

**Protein Families:**

Druggable Genome, Transmembrane

**Protein Pathways:**

Axon guidance, Colorectal cancer, Pathways in cancer

**Product images:**

HEK293T cells were transfected with the pCMV6-ENTRY control (Left lane) or pCMV6-ENTRY DCC ([RC218506], Right lane) cDNA for 48 hrs and lysed. Equivalent amounts of cell lysates (5 ug per lane) were separated by SDS-PAGE and immunoblotted with anti-DCC. Positive lysates [LY417439] (100ug) and [LC417439] (20ug) can be purchased separately from OriGene.