

Product datasheet for **TA804513M**

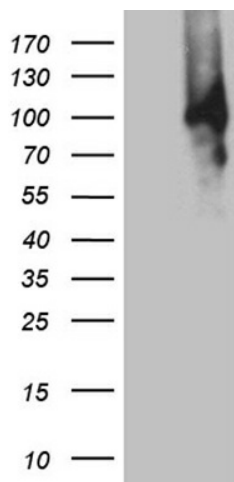
PWWP3A Mouse Monoclonal Antibody [Clone ID: OTI4E1]

Product data:

| | |
|-------------------------|---|
| Product Type: | Primary Antibodies |
| Clone Name: | OTI4E1 |
| Applications: | WB |
| Recommended Dilution: | WB 1:500 |
| Reactivity: | Human |
| Host: | Mouse |
| Isotype: | IgG2a |
| Clonality: | Monoclonal |
| Immunogen: | Human recombinant protein fragment corresponding to amino acids 1-270 of human MUM1 (NP_116242) produced in E.coli. |
| Formulation: | PBS (pH 7.3) containing 1% BSA, 50% glycerol and 0.02% sodium azide. |
| Concentration: | 1 mg/ml |
| Purification: | Purified from mouse ascites fluids or tissue culture supernatant by affinity chromatography (protein A/G) |
| Conjugation: | Unconjugated |
| Storage: | Store at -20°C as received. |
| Stability: | Stable for 12 months from date of receipt. |
| Predicted Protein Size: | 78.6 kDa |
| Gene Name: | melanoma associated antigen (mutated) 1 |
| Database Link: | NP_116242 Entrez Gene 84939 Human Q2TAK8 |
| Synonyms: | EXPAND1; HSPC211; MUM-1 |



[View online »](#)

Product images:


HEK293T cells were transfected with the pCMV6-ENTRY control (Cat# [PS100001], Left lane) or pCMV6-ENTRY MUM1 (Cat# [RC211098], Right lane) cDNA for 48 hrs and lysed. Equivalent amounts of cell lysates (5 ug per lane) were separated by SDS-PAGE and immunoblotted with anti-MUM1 (Cat# [TA804513]). Positive lysates [LY409887] (100ug) and [LC409887] (20ug) can be purchased separately from OriGene.