

## Product datasheet for **TA804483M**

### RRM1 Mouse Monoclonal Antibody [Clone ID: OTI12B9]

#### Product data:

Product Type:	Primary Antibodies
Clone Name:	OTI12B9
Applications:	WB
Recommended Dilution:	WB 1:500
Reactivity:	Human, Mouse, Rat
Host:	Mouse
Isotype:	IgG2a
Clonality:	Monoclonal
Immunogen:	Human recombinant protein fragment corresponding to amino acids 541-792 of human RRM1 (NP_001024) produced in E.coli.
Formulation:	PBS (pH 7.3) containing 1% BSA, 50% glycerol and 0.02% sodium azide.
Concentration:	1 mg/ml
Purification:	Purified from mouse ascites fluids or tissue culture supernatant by affinity chromatography (protein A/G)
Conjugation:	Unconjugated
Storage:	Store at -20°C as received.
Stability:	Stable for 12 months from date of receipt.
Predicted Protein Size:	89.9 kDa
Gene Name:	ribonucleotide reductase catalytic subunit M1
Database Link:	<a href="#">NP_001024</a> <a href="#">Entrez Gene 20133 Mouse</a> <a href="#">Entrez Gene 685579 Rat</a> <a href="#">Entrez Gene 6240 Human</a> <a href="#">P23921</a>



[View online »](#)

**Background:**

This gene encodes one of two non-identical subunits that constitute ribonucleoside-diphosphate reductase, an enzyme essential for the production of deoxyribonucleotides prior to DNA synthesis in S phase of dividing cells. It is one of several genes located in the imprinted gene domain of 11p15.5, an important tumor-suppressor gene region. Alterations in this region have been associated with the Beckwith-Wiedemann syndrome, Wilms tumor, rhabdomyosarcoma, adrenocortical carcinoma, and lung, ovarian, and breast cancer. This gene may play a role in malignancies and disease that involve this region. [provided by RefSeq, Jul 2008]

**Synonyms:**

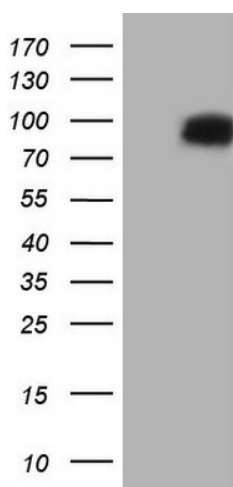
R1; RIR1; RR1

**Protein Families:**

Druggable Genome

**Protein Pathways:**

Glutathione metabolism, Metabolic pathways, Purine metabolism, Pyrimidine metabolism

**Product images:**


HEK293T cells were transfected with the pCMV6-ENTRY control (Left lane) or pCMV6-ENTRY RRM1 ([RC200726], Right lane) cDNA for 48 hrs and lysed. Equivalent amounts of cell lysates (5 ug per lane) were separated by SDS-PAGE and immunoblotted with anti-RRM1. Positive lysates [LY422336] (100ug) and [LC422336] (20ug) can be purchased separately from OriGene.