

Product datasheet for **TA804459S**

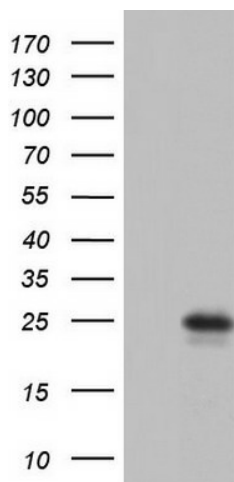
RSPO1 Mouse Monoclonal Antibody [Clone ID: OTI2B11]

Product data:

Product Type:	Primary Antibodies
Clone Name:	OTI2B11
Applications:	WB
Recommended Dilution:	WB 1:2000
Reactivity:	Human, Mouse, Rat
Host:	Mouse
Isotype:	IgG2a
Clonality:	Monoclonal
Immunogen:	Human recombinant protein fragment corresponding to amino acids 21-263 of human RSPO1 (NP_001033722) produced in E.coli.
Formulation:	PBS (pH 7.3) containing 1% BSA, 50% glycerol and 0.02% sodium azide.
Concentration:	1 mg/ml
Purification:	Purified from mouse ascites fluids or tissue culture supernatant by affinity chromatography (protein A/G)
Conjugation:	Unconjugated
Storage:	Store at -20°C as received.
Stability:	Stable for 12 months from date of receipt.
Predicted Protein Size:	28.8 kDa
Gene Name:	R-spondin 1
Database Link:	NP_001033722 Entrez Gene 192199 Mouse Entrez Gene 313589 Rat Entrez Gene 284654 Human Q2MKA7
Synonyms:	CRISTIN3; RSPO
Protein Families:	Secreted Protein



[View online »](#)

Product images:

HEK293T cells were transfected with the pCMV6-ENTRY control (Left lane) or pCMV6-ENTRY RSPO1 ([RC217921], Right lane) cDNA for 48 hrs and lysed. Equivalent amounts of cell lysates (5 ug per lane) were separated by SDS-PAGE and immunoblotted with anti-RSPO1. Positive lysates [LY422005] (100ug) and [LC422005] (20ug) can be purchased separately from OriGene.