

## Product datasheet for **TA804457**

### **PAFAH1B3 Mouse Monoclonal Antibody [Clone ID: OTI2E8]**

#### **Product data:**

Product Type:	Primary Antibodies
Clone Name:	OTI2E8
Applications:	WB
Recommended Dilution:	WB 1:2000
Reactivity:	Human, Mouse, Rat
Host:	Mouse
Isotype:	IgG1
Clonality:	Monoclonal
Immunogen:	Full length human recombinant protein of human PAFAH1B3 (NP_001139411) produced in E.coli.
Formulation:	PBS (pH 7.3) containing 1% BSA, 50% glycerol and 0.02% sodium azide.
Concentration:	1 mg/ml
Purification:	Purified from mouse ascites fluids or tissue culture supernatant by affinity chromatography (protein A/G)
Conjugation:	Unconjugated
Storage:	Store at -20°C as received.
Stability:	Stable for 12 months from date of receipt.
Predicted Protein Size:	25.6 kDa
Gene Name:	platelet activating factor acetylhydrolase 1b catalytic subunit 3
Database Link:	<a href="#">NP_001139411</a> <a href="#">Entrez Gene 5050 Human</a> <a href="#">Q15102</a>

[View online »](#)

**Background:**

This gene encodes an acetylhydrolase that catalyzes the removal of an acetyl group from the glycerol backbone of platelet-activating factor. The encoded enzyme is a subunit of the platelet-activating factor acetylhydrolase isoform 1B complex, which consists of the catalytic beta and gamma subunits and the regulatory alpha subunit. This complex functions in brain development. A translocation between this gene on chromosome 19 and the CDC-like kinase 2 gene on chromosome 1 has been observed, and was associated with mental retardation, ataxia, and atrophy of the brain. Alternatively spliced transcript variants have been described. [provided by RefSeq, Mar 2009]

**Synonyms:**

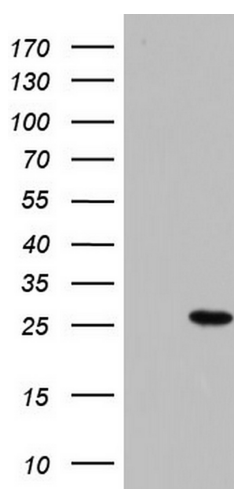
PAFAHG

**Protein Families:**

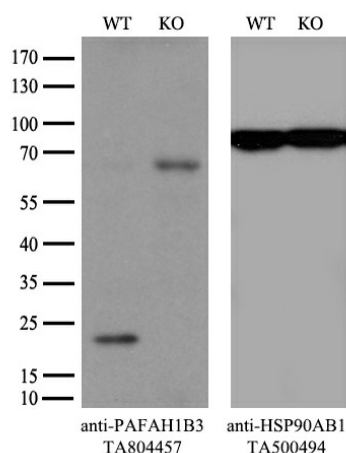
Druggable Genome

**Protein Pathways:**

Ether lipid metabolism, Metabolic pathways

**Product images:**


HEK293T cells were transfected with the pCMV6-ENTRY control (Left lane) or pCMV6-ENTRY PAFAH1B3 ([RC227227], Right lane) cDNA for 48 hrs and lysed. Equivalent amounts of cell lysates (5 ug per lane) were separated by SDS-PAGE and immunoblotted with anti-PAFAH1B3. Positive lysates [LY429044] (100ug) and [LC429044] (20ug) can be purchased separately from OriGene.



Equivalent amounts of cell lysates (10 ug per lane) of wild-type 293T cells (WT, Cat# LC810293T) and PAFAH1B3-Knockout 293T cells (KO, Cat# [LC812333]) were separated by SDS-PAGE and immunoblotted with anti-PAFAH1B3 monoclonal antibody TA804457, (1:100). Then the blotted membrane was stripped and reprobed with anti-HSP90AB1 antibody ([TA500494]) as a loading control.