

## Product datasheet for **TA804456S**

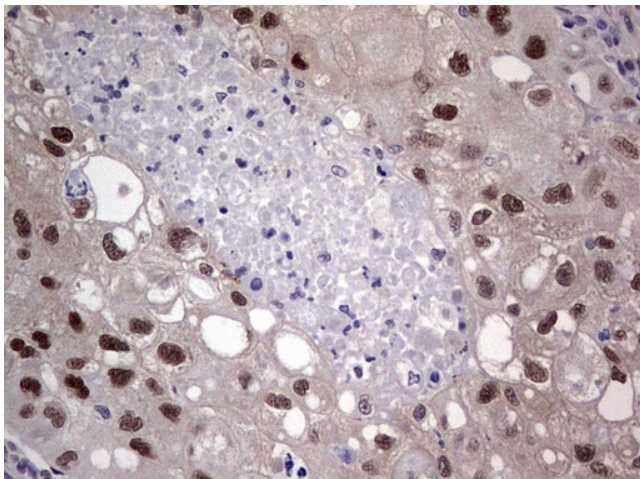
### MDM2 Mouse Monoclonal Antibody [Clone ID: OTI8C6]

#### Product data:

|                         |   |
|-------------------------|---|
| Product Type:           | Primary Antibodies  |
| Clone Name:             | OTI8C6  |
| Applications:           | IHC   |
| Recommended Dilution:   | IHC 1:150   |
| Reactivity:             | Human   |
| Host:                   | Mouse   |
| Isotype:                | IgG1  |
| Clonality:              | Monoclonal  |
| Immunogen:              | Human recombinant protein fragment corresponding to amino acids 119-438 of human MDM2 (NP_002383) produced in E.coli.   |
| Formulation:            | PBS (pH 7.3) containing 1% BSA, 50% glycerol and 0.02% sodium azide.  |
| Concentration:          | 1 mg/ml   |
| Purification:           | Purified from mouse ascites fluids or tissue culture supernatant by affinity chromatography (protein A/G)   |
| Conjugation:            | Unconjugated  |
| Storage:                | Store at -20°C as received.   |
| Stability:              | Stable for 12 months from date of receipt.  |
| Predicted Protein Size: | 55.8 kDa  |
| Gene Name:              | MDM2 proto-oncogene   |
| Database Link:          | <a href="#">NP_002383</a><br><a href="#">Entrez Gene 4193 Human</a><br><a href="#">Q00987</a>   |
| Synonyms:               | ACTFS; hdm2; HDMX   |
| Protein Families:       | Druggable Genome, Transcription Factors   |
| Protein Pathways:       | Bladder cancer, Cell cycle, Chronic myeloid leukemia, Endocytosis, Glioma, Melanoma, p53 signaling pathway, Pathways in cancer, Prostate cancer, Ubiquitin mediated proteolysis |



[View online »](#)

**Product images:**

Immunohistochemical staining of paraffin-embedded Carcinoma of Human lung tissue using anti-MDM2 mouse monoclonal antibody. (Heat-induced epitope retrieval by 1mM EDTA in 10mM Tris, pH8.5, 120°C for 3min, [TA804456])