

Product datasheet for **TA804432M**

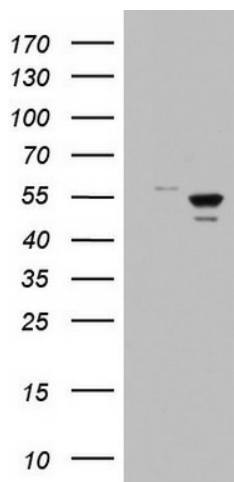
DDX6 Mouse Monoclonal Antibody [Clone ID: OTI3E2]

Product data:

Product Type:	Primary Antibodies
Clone Name:	OTI3E2
Applications:	WB
Recommended Dilution:	WB 1:500
Reactivity:	Human, Mouse, Rat
Host:	Mouse
Isotype:	IgG1
Clonality:	Monoclonal
Immunogen:	Human recombinant protein fragment corresponding to amino acids 1-298 of human DDX6 (NP_004388) produced in E.coli.
Formulation:	PBS (pH 7.3) containing 1% BSA, 50% glycerol and 0.02% sodium azide.
Concentration:	1 mg/ml
Purification:	Purified from mouse ascites fluids or tissue culture supernatant by affinity chromatography (protein A/G)
Conjugation:	Unconjugated
Storage:	Store at -20°C as received.
Stability:	Stable for 12 months from date of receipt.
Predicted Protein Size:	54.2 kDa
Gene Name:	DEAD-box helicase 6
Database Link:	NP_004388 Entrez Gene 13209 Mouse Entrez Gene 500988 Rat Entrez Gene 1656 Human P26196
Synonyms:	HLR2; P54; RCK
Protein Pathways:	RNA degradation



[View online »](#)

Product images:


HEK293T cells were transfected with the pCMV6-ENTRY control (Left lane) or pCMV6-ENTRY DDX6 ([RC209431], Right lane) cDNA for 48 hrs and lysed. Equivalent amounts of cell lysates (5 ug per lane) were separated by SDS-PAGE and immunoblotted with anti-DDX6. Positive lysates [LY401399] (100ug) and [LC401399] (20ug) can be purchased separately from OriGene.