

## Product datasheet for **TA804426AM**

### Macrophage Inflammatory Protein 3 beta (CCL19) Mouse Monoclonal Antibody (Biotin conjugated) [Clone ID: OTI4F3]

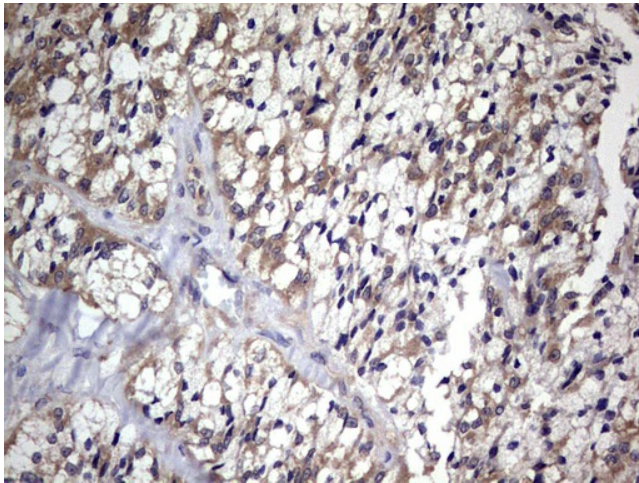
#### Product data:

Product Type:	Primary Antibodies
Clone Name:	OTI4F3
Applications:	IHC
Recommended Dilution:	IHC 1:150
Reactivity:	Human
Host:	Mouse
Isotype:	IgG1
Clonality:	Monoclonal
Immunogen:	Human recombinant protein fragment corresponding to amino acids 22-98 of human CCL19 (NP_006265) produced in E.coli.
Formulation:	PBS (pH 7.3) containing 1% BSA, 50% glycerol and 0.02% sodium azide.
Concentration:	0.5 mg/ml
Purification:	Purified from mouse ascites fluids or tissue culture supernatant by affinity chromatography (protein A/G)
Conjugation:	Biotin
Storage:	Store at -20°C as received.
Stability:	Stable for 12 months from date of receipt.
Predicted Protein Size:	8.8 kDa
Gene Name:	C-C motif chemokine ligand 19
Database Link:	<a href="#">NP_006265</a> <a href="#">Entrez Gene 6363 Human</a> <a href="#">Q99731</a>



[View online »](#)

- Background:** This gene is one of several CC cytokine genes clustered on the p-arm of chromosome 9. Cytokines are a family of secreted proteins involved in immunoregulatory and inflammatory processes. The CC cytokines are proteins characterized by two adjacent cysteines. The cytokine encoded by this gene may play a role in normal lymphocyte recirculation and homing. It also plays an important role in trafficking of T cells in thymus, and in T cell and B cell migration to secondary lymphoid organs. It specifically binds to chemokine receptor CCR7. [provided by RefSeq, Jul 2008]
- Synonyms:** CKb11; ELC; MIP-3b; MIP3B; SCYA19
- Protein Families:** Druggable Genome, Secreted Protein
- Protein Pathways:** Chemokine signaling pathway, Cytokine-cytokine receptor interaction

**Product images:**

Immunohistochemical staining of paraffin-embedded Carcinoma of Human thyroid tissue using anti-CCL19 mouse monoclonal antibody. (Heat-induced epitope retrieval by 1mM EDTA in 10mM Tris, pH8.5, 120°C for 3min, [TA804426])