

Product datasheet for **TA804425BM**

Laminin 5 (LAMB3) Mouse Monoclonal Antibody (HRP conjugated) [Clone ID: OTI1E7]

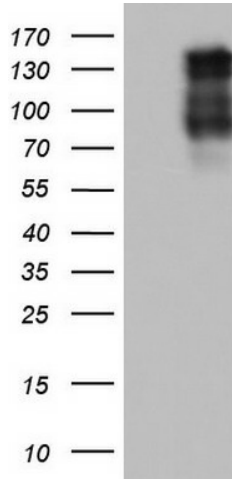
Product data:

Product Type:	Primary Antibodies
Clone Name:	OTI1E7
Applications:	WB
Recommended Dilution:	WB 1:2000
Reactivity:	Human
Host:	Mouse
Isotype:	IgG2b
Clonality:	Monoclonal
Immunogen:	Human recombinant protein fragment corresponding to amino acids 424-773 of human LAMB3 (NP_000219) produced in E.coli.
Formulation:	PBS (pH 7.3) containing 1% BSA, 50% glycerol.
Concentration:	0.5 mg/ml
Purification:	Purified from mouse ascites fluids or tissue culture supernatant by affinity chromatography (protein A/G)
Conjugation:	HRP
Storage:	Store at -20°C as received.
Stability:	Stable for 12 months from date of receipt.
Predicted Protein Size:	127.6 kDa
Gene Name:	laminin subunit beta 3
Database Link:	NP_000219 Entrez Gene 3914 Human Q13751
Synonyms:	A11A; BM600-125KDA; LAM5; LAMNB1
Protein Families:	Druggable Genome, Secreted Protein
Protein Pathways:	ECM-receptor interaction, Focal adhesion, Pathways in cancer, Small cell lung cancer



[View online »](#)

Product images:



HEK293T cells were transfected with the pCMV6-ENTRY control (Left lane) or pCMV6-ENTRY LAMB3 ([RC215510], Right lane) cDNA for 48 hrs and lysed. Equivalent amounts of cell lysates (5 ug per lane) were separated by SDS-PAGE and immunoblotted with anti-LAMB3. Positive lysates [LY424856] (100ug) and [LC424856] (20ug) can be purchased separately from OriGene.