

Product datasheet for **TA804414**

CD34 Mouse Monoclonal Antibody [Clone ID: OTI39B1]

Product data:

Product Type:	Primary Antibodies
Clone Name:	OTI39B1
Applications:	IHC, WB
Recommended Dilution:	WB 1:200, IHC 1:150
Reactivity:	Human
Host:	Mouse
Isotype:	IgG2b
Clonality:	Monoclonal
Immunogen:	HEK293T cells transfected with full length human CD34 gene (RC204446)
Formulation:	PBS (pH 7.3) containing 1% BSA, 50% glycerol and 0.02% sodium azide.
Concentration:	1 mg/ml
Purification:	Purified from mouse ascites fluids or tissue culture supernatant by affinity chromatography (protein A/G)
Conjugation:	Unconjugated
Storage:	Store at -20°C as received.
Stability:	Stable for 12 months from date of receipt.
Predicted Protein Size:	40.5 kDa
Gene Name:	CD34 molecule
Database Link:	NP_001020280 Entrez Gene 947 Human P28906
Background:	The protein encoded by this gene may play a role in the attachment of stem cells to the bone marrow extracellular matrix or to stromal cells. This single-pass membrane protein is highly glycosylated and phosphorylated by protein kinase C. Two transcript variants encoding different isoforms have been found for this gene. [provided by RefSeq, Aug 2011]
Synonyms:	CD34 antigen; CD34 molecule; hematopoietic progenitor cell antigen CD34; OTTHUMP00000034733; OTTHUMP00000034734

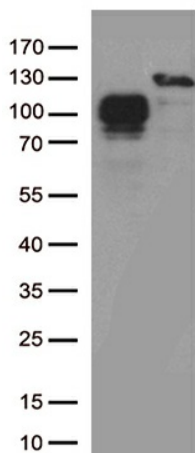


[View online »](#)

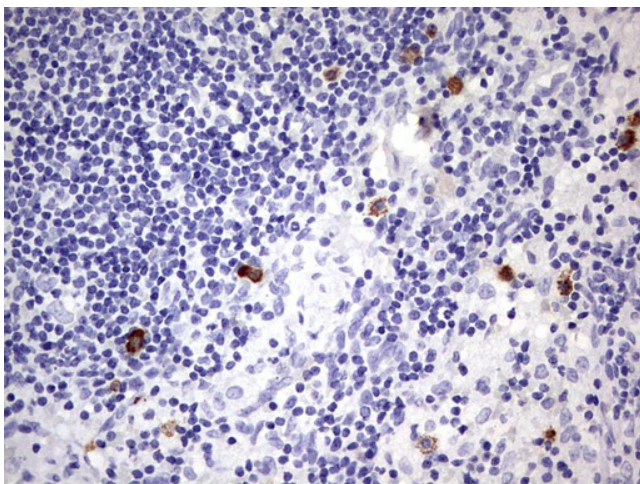
Protein Families: Adult stem cells, Cancer stem cells, Druggable Genome, Embryonic stem cells, ES Cell Differentiation/IPS, Transmembrane

Protein Pathways: Cell adhesion molecules (CAMs), Hematopoietic cell lineage

Product images:



HEK293T cells were transfected with the pCMV6-ENTRY control (Left lane) or pCMV6-ENTRY CD34 [RC204446], Right lane) cDNA for 48 hrs and lysed. Equivalent amounts of cell lysates (5 ug per lane) were separated by SDS-PAGE and immunoblotted with anti-CD34. Positive lysates [LY422593] (100ug) and [LC422593] (20ug) can be purchased separately from OriGene.



Immunohistochemical staining of paraffin-embedded Human lymph node tissue within the normal limits using anti-CD34 mouse monoclonal antibody. (Heat-induced epitope retrieval by 1mM EDTA in 10mM Tris, pH8.5, 120°C for 3min, TA804414)