

## Product datasheet for **TA804403S**

### Laminin 5 (LAMB3) Mouse Monoclonal Antibody [Clone ID: OTI2D11]

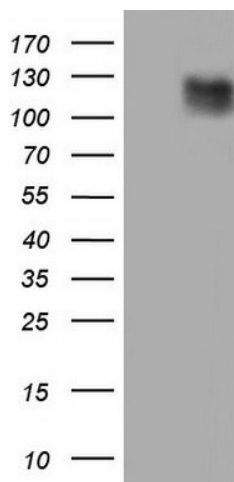
#### Product data:

|                         |  |
|-------------------------|--|
| Product Type:           | Primary Antibodies   |
| Clone Name:             | OTI2D11  |
| Applications:           | IHC, WB  |
| Recommended Dilution:   | WB 1:2000, IHC 1:150   |
| Reactivity:             | Human  |
| Host:                   | Mouse  |
| Isotype:                | IgG2a  |
| Clonality:              | Monoclonal   |
| Immunogen:              | Human recombinant protein fragment corresponding to amino acids 424-773 of human LAMB3 (NP_000219) produced in E.coli. |
| Formulation:            | PBS (pH 7.3) containing 1% BSA, 50% glycerol and 0.02% sodium azide.   |
| Concentration:          | 1 mg/ml  |
| Purification:           | Purified from mouse ascites fluids or tissue culture supernatant by affinity chromatography (protein A/G)              |
| Conjugation:            | Unconjugated   |
| Storage:                | Store at -20°C as received.  |
| Stability:              | Stable for 12 months from date of receipt.   |
| Predicted Protein Size: | 127.6 kDa  |
| Gene Name:              | laminin subunit beta 3   |
| Database Link:          | <a href="#">NP_000219</a><br><a href="#">Entrez Gene 3914 Human</a><br><a href="#">Q13751</a>                          |
| Synonyms:               | A11A; BM600-125KDA; LAM5; LAMNB1   |
| Protein Families:       | Druggable Genome, Secreted Protein   |
| Protein Pathways:       | ECM-receptor interaction, Focal adhesion, Pathways in cancer, Small cell lung cancer                                   |

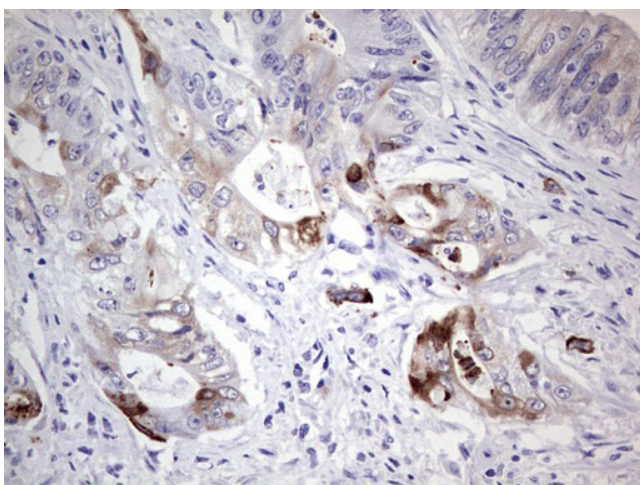


[View online »](#)

## Product images:



HEK293T cells were transfected with the pCMV6-ENTRY control (Cat# [PS100001], Left lane) or pCMV6-ENTRY LAMB3 (Cat# [RC215510], Right lane) cDNA for 48 hrs and lysed. Equivalent amounts of cell lysates (5 ug per lane) were separated by SDS-PAGE and immunoblotted with anti-LAMB3 (Cat# [TA804403]). Positive lysates [LY424856] (100ug) and [LC424856] (20ug) can be purchased separately from OriGene.



Immunohistochemical staining of paraffin-embedded Adenocarcinoma of Human colon tissue using anti-LAMB3 mouse monoclonal antibody. (Heat-induced epitope retrieval by 1mM EDTA in 10mM Tris, pH8.5, 120°C for 3min, [TA804403])