

Product datasheet for **TA804403AM**

Laminin 5 (LAMB3) Mouse Monoclonal Antibody (Biotin conjugated) [Clone ID: OTI2D11]

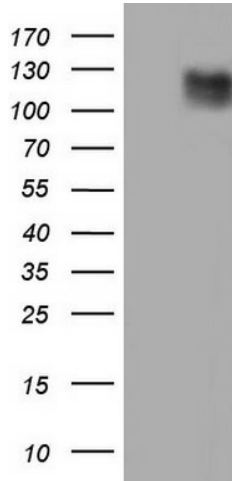
Product data:

| | |
|-------------------------|--|
| Product Type: | Primary Antibodies |
| Clone Name: | OTI2D11 |
| Applications: | IHC, WB |
| Recommended Dilution: | WB 1:2000, IHC 1:150 |
| Reactivity: | Human |
| Host: | Mouse |
| Isotype: | IgG2a |
| Clonality: | Monoclonal |
| Immunogen: | Human recombinant protein fragment corresponding to amino acids 424-773 of human LAMB3 (NP_000219) produced in E.coli. |
| Formulation: | PBS (pH 7.3) containing 1% BSA, 50% glycerol and 0.02% sodium azide. |
| Concentration: | 0.5 mg/ml |
| Purification: | Purified from mouse ascites fluids or tissue culture supernatant by affinity chromatography (protein A/G) |
| Conjugation: | Biotin |
| Storage: | Store at -20°C as received. |
| Stability: | Stable for 12 months from date of receipt. |
| Predicted Protein Size: | 127.6 kDa |
| Gene Name: | laminin subunit beta 3 |
| Database Link: | NP_000219 Entrez Gene 3914 Human Q13751 |
| Synonyms: | A11A; BM600-125KDA; LAM5; LAMNB1 |
| Protein Families: | Druggable Genome, Secreted Protein |
| Protein Pathways: | ECM-receptor interaction, Focal adhesion, Pathways in cancer, Small cell lung cancer |

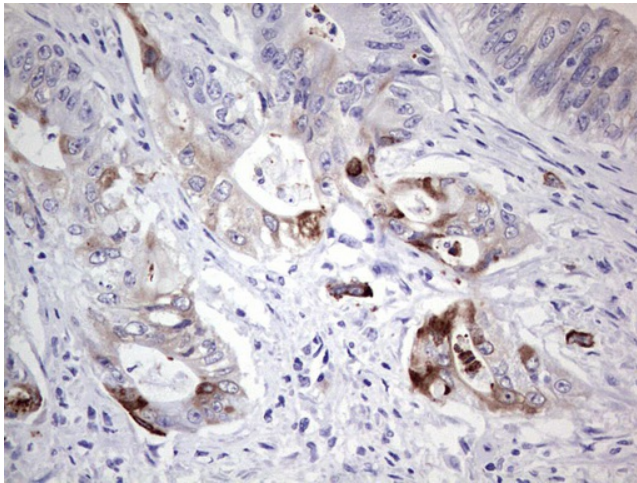


[View online »](#)

Product images:



HEK293T cells were transfected with the pCMV6-ENTRY control (Cat# [PS100001], Left lane) or pCMV6-ENTRY LAMB3 (Cat# [RC215510], Right lane) cDNA for 48 hrs and lysed. Equivalent amounts of cell lysates (5 ug per lane) were separated by SDS-PAGE and immunoblotted with anti-LAMB3(Cat# [TA804403]). Positive lysates [LY424856] (100ug) and [LC424856] (20ug) can be purchased separately from OriGene.



Immunohistochemical staining of paraffin-embedded Adenocarcinoma of Human colon tissue using anti-LAMB3 mouse monoclonal antibody. (Heat-induced epitope retrieval by 1mM EDTA in 10mM Tris, pH8.5, 120°C for 3min, [TA804403])