

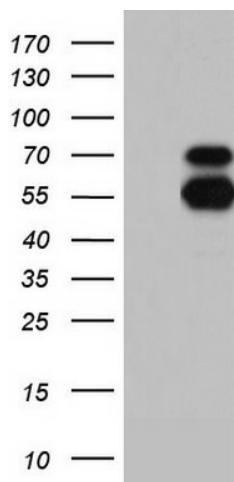
Product datasheet for **TA804402M**

CD39 (ENTPD1) Mouse Monoclonal Antibody [Clone ID: OTI1G8]

Product data:

Product Type:	Primary Antibodies
Clone Name:	OTI1G8
Applications:	WB
Recommended Dilution:	WB 1:2000
Reactivity:	Human
Host:	Mouse
Isotype:	IgG2a
Clonality:	Monoclonal
Immunogen:	Human recombinant protein fragment corresponding to amino acids 38-307 of human ENTPD1 (NP_001767) produced in E.coli.
Formulation:	PBS (pH 7.3) containing 1% BSA, 50% glycerol and 0.02% sodium azide.
Concentration:	1 mg/ml
Purification:	Purified from mouse ascites fluids or tissue culture supernatant by affinity chromatography (protein A/G)
Conjugation:	Unconjugated
Storage:	Store at -20°C as received.
Stability:	Stable for 12 months from date of receipt.
Gene Name:	ectonucleoside triphosphate diphosphohydrolase 1
Database Link:	NP_001767 Entrez Gene 953 Human P49961
Synonyms:	ATPDase; CD39; NTPDase-1; SPG64
Protein Families:	Transmembrane
Protein Pathways:	Purine metabolism, Pyrimidine metabolism

[View online »](#)

Product images:

HEK293T cells were transfected with the pCMV6-ENTRY control (Cat# [PS100001], Left lane) or pCMV6-ENTRY ENTPD1 (Cat# [RC219359], Right lane) cDNA for 48 hrs and lysed. Equivalent amounts of cell lysates (5 ug per lane) were separated by SDS-PAGE and immunoblotted with anti-ENTPD1 (Cat# [TA804402]).