

## Product datasheet for **TA804382M**

### RRM1 Mouse Monoclonal Antibody [Clone ID: OTI6G8]

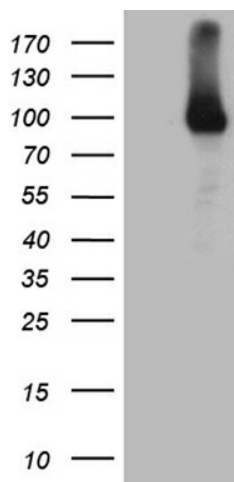
#### Product data:

Product Type:	Primary Antibodies
Clone Name:	OTI6G8
Applications:	IHC, WB
Recommended Dilution:	WB 1:500, IHC 1:500
Reactivity:	Human, Mouse, Rat
Host:	Mouse
Isotype:	IgG1
Clonality:	Monoclonal
Immunogen:	Human recombinant protein fragment corresponding to amino acids 541-792 of human RRM1 (NP_001024) produced in E.coli.
Formulation:	PBS (pH 7.3) containing 1% BSA, 50% glycerol and 0.02% sodium azide.
Concentration:	1 mg/ml
Purification:	Purified from mouse ascites fluids or tissue culture supernatant by affinity chromatography (protein A/G)
Conjugation:	Unconjugated
Storage:	Store at -20°C as received.
Stability:	Stable for 12 months from date of receipt.
Predicted Protein Size:	89.9 kDa
Gene Name:	ribonucleotide reductase catalytic subunit M1
Database Link:	<a href="#">NP_001024</a> <a href="#">Entrez Gene 20133 Mouse</a> <a href="#">Entrez Gene 685579 Rat</a> <a href="#">Entrez Gene 6240 Human</a> <a href="#">P23921</a>
Synonyms:	R1; RIR1; RR1
Protein Families:	Druggable Genome
Protein Pathways:	Glutathione metabolism, Metabolic pathways, Purine metabolism, Pyrimidine metabolism

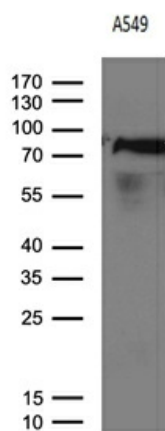


[View online »](#)

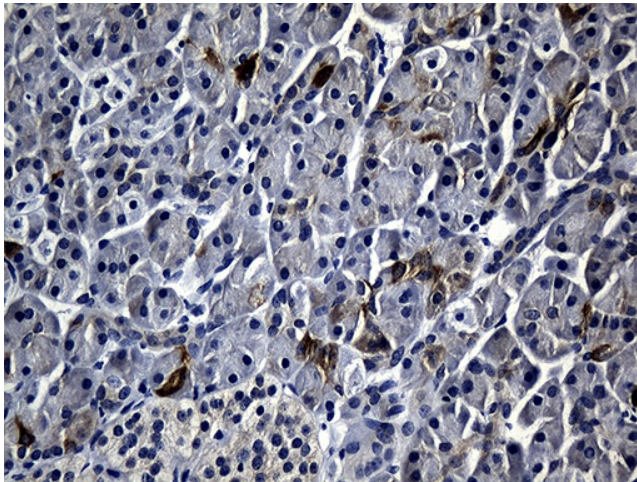
## Product images:



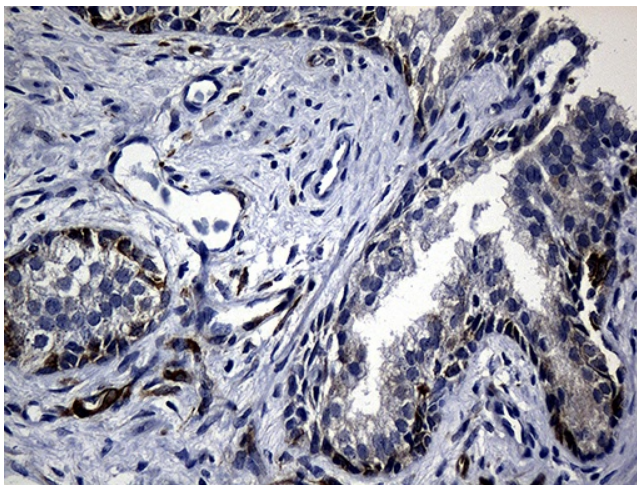
HEK293T cells were transfected with the pCMV6-ENTRY control (Cat# [PS100001], Left lane) or pCMV6-ENTRY RRM1 (Cat# [RC200726], Right lane) cDNA for 48 hrs and lysed. Equivalent amounts of cell lysates (5 ug per lane) were separated by SDS-PAGE and immunoblotted with anti-RRM1 (Cat# [TA804382])(1:500). Positive lysates [LY422336] (100ug) and [LC422336] (20ug) can be purchased separately from OriGene.



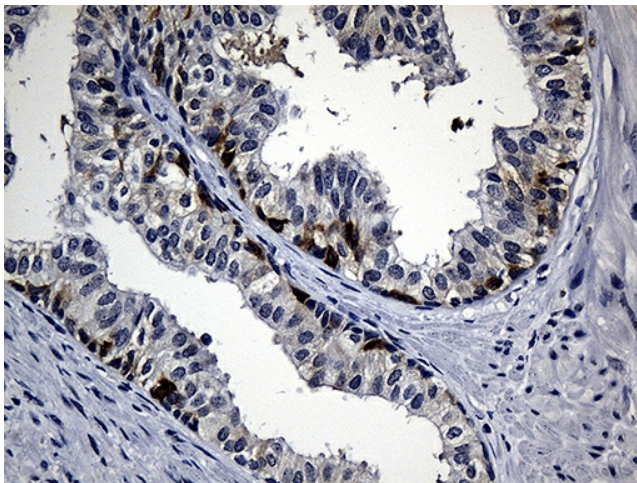
Western blot analysis of extracts (35ug) from A549 cell line by using anti-RRM1 monoclonal antibody (1:500).



Immunohistochemical staining of paraffin-embedded Human pancreas tissue within the normal limits using anti-RRM1 mouse monoclonal antibody. Heat-induced epitope retrieval by EDTA solution buffer pH 8.0 at 120°C for 3 min.



Immunohistochemical staining of paraffin-embedded Human prostate tissue within the normal limits using anti-RRM1 mouse monoclonal antibody. Heat-induced epitope retrieval by EDTA solution buffer pH 8.0 at 120°C for 3 min.



Immunohistochemical staining of paraffin-embedded Carcinoma of Human prostate tissue using anti-RRM1 mouse monoclonal antibody. Heat-induced epitope retrieval by EDTA solution buffer pH 8.0 at 120°C for 3 min.