

## Product datasheet for **TA804374AM**

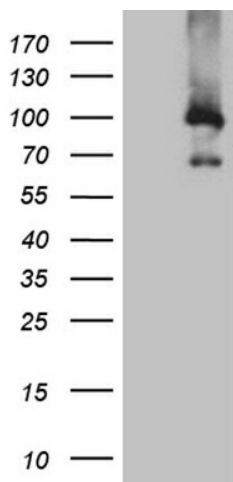
### **PWWP3A Mouse Monoclonal Antibody (Biotin conjugated) [Clone ID: OTI1B2]**

#### **Product data:**

Product Type:	Primary Antibodies
Clone Name:	OTI1B2
Applications:	WB
Recommended Dilution:	WB 1:500
Reactivity:	Human
Host:	Mouse
Isotype:	IgG1
Clonality:	Monoclonal
Immunogen:	Human recombinant protein fragment corresponding to amino acids 1-270 of human MUM1 (NP_116242) produced in E.coli.
Formulation:	PBS (pH 7.3) containing 1% BSA, 50% glycerol and 0.02% sodium azide.
Concentration:	0.5 mg/ml
Purification:	Purified from mouse ascites fluids or tissue culture supernatant by affinity chromatography (protein A/G)
Conjugation:	Biotin
Storage:	Store at -20°C as received.
Stability:	Stable for 12 months from date of receipt.
Predicted Protein Size:	78.6 kDa
Gene Name:	melanoma associated antigen (mutated) 1
Database Link:	<a href="#">NP_116242</a> <a href="#">Entrez Gene 84939 Human</a> <a href="#">Q2TAK8</a>
Synonyms:	EXPAND1; HSPC211; MUM-1



[View online »](#)

**Product images:**

HEK293T cells were transfected with the pCMV6-ENTRY control (Left lane) or pCMV6-ENTRY MUM1 ([RC211098], Right lane) cDNA for 48 hrs and lysed. Equivalent amounts of cell lysates (5 ug per lane) were separated by SDS-PAGE and immunoblotted with anti-MUM1. Positive lysates [LY409887] (100ug) and [LC409887] (20ug) can be purchased separately from OriGene.