

Product datasheet for **TA804355AM**

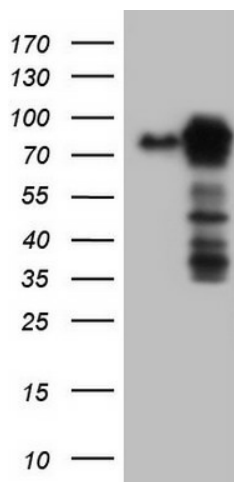
LYRIC (MTDH) Mouse Monoclonal Antibody (Biotin conjugated) [Clone ID: OTI1H1]

Product data:

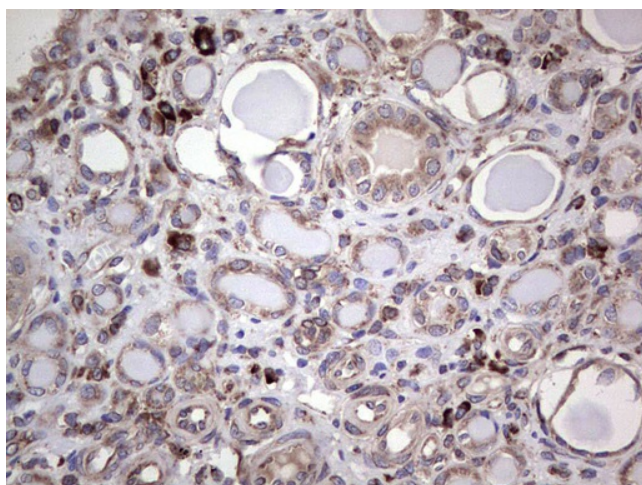
Product Type:	Primary Antibodies
Clone Name:	OTI1H1
Applications:	IHC, WB
Recommended Dilution:	WB 1:2000, IHC 1:150
Reactivity:	Human, Mouse, Rat
Host:	Mouse
Isotype:	IgG1
Clonality:	Monoclonal
Immunogen:	Human recombinant protein fragment corresponding to amino acids 70-582 of human MTDH (NP_848927) produced in SF9 cell.
Formulation:	PBS (pH 7.3) containing 1% BSA, 50% glycerol and 0.02% sodium azide.
Concentration:	0.5 mg/ml
Purification:	Purified from mouse ascites fluids or tissue culture supernatant by affinity chromatography (protein A/G)
Conjugation:	Biotin
Storage:	Store at -20°C as received.
Stability:	Stable for 12 months from date of receipt.
Predicted Protein Size:	63.7 kDa
Gene Name:	metadherin
Database Link:	NP_848927 Entrez Gene 67154 Mouse Entrez Gene 170910 Rat Entrez Gene 92140 Human Q86UE4
Synonyms:	3D3; AEG-1; AEG1; LYRIC; LYRIC/3D3
Protein Families:	Transmembrane



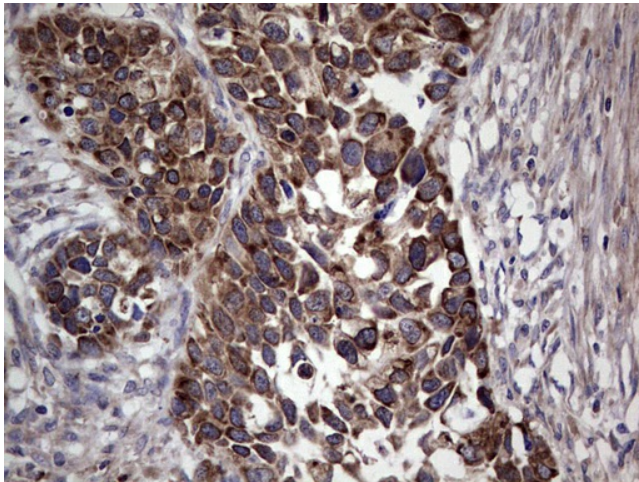
[View online »](#)

Product images:

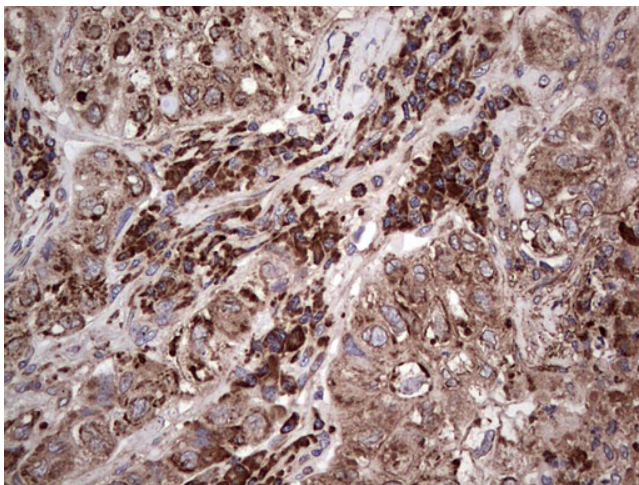
HEK293T cells were transfected with the pCMV6-ENTRY control (Left lane) or pCMV6-ENTRY MTDH ([RC207238], Right lane) cDNA for 48 hrs and lysed. Equivalent amounts of cell lysates (5 ug per lane) were separated by SDS-PAGE and immunoblotted with anti-MTDH. Positive lysates [LY403614] (100ug) and [LC403614] (20ug) can be purchased separately from OriGene.



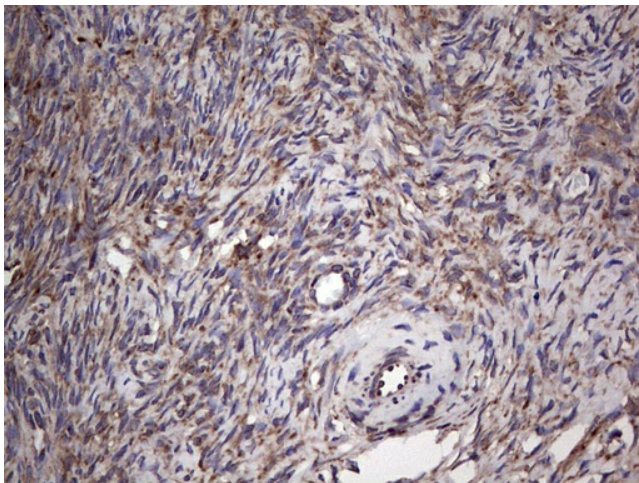
Immunohistochemical staining of paraffin-embedded Human Kidney tissue within the normal limits using anti-MTDH mouse monoclonal antibody. (Heat-induced epitope retrieval by 1mM EDTA in 10mM Tris, pH8.5, 120°C for 3min, [TA804355])



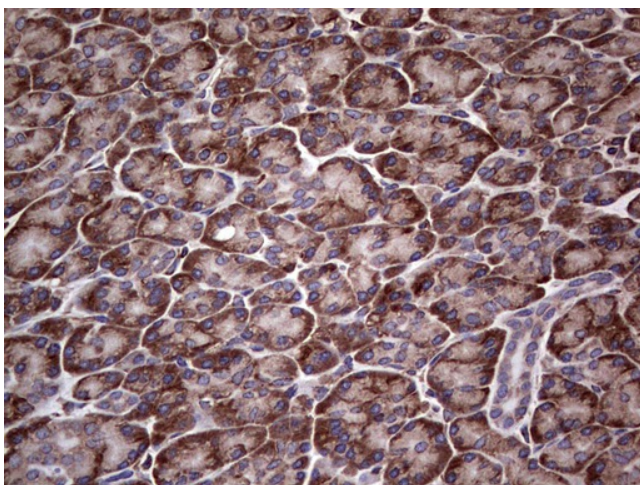
Immunohistochemical staining of paraffin-embedded Carcinoma of Human kidney tissue using anti-MTDH mouse monoclonal antibody. (Heat-induced epitope retrieval by 1mM EDTA in 10mM Tris, pH8.5, 120°C for 3min, [TA804355])



Immunohistochemical staining of paraffin-embedded Carcinoma of Human lung tissue using anti-MTDH mouse monoclonal antibody. (Heat-induced epitope retrieval by 1mM EDTA in 10mM Tris, pH8.5, 120°C for 3min, [TA804355])



Immunohistochemical staining of paraffin-embedded Human Ovary tissue within the normal limits using anti-MTDH mouse monoclonal antibody. (Heat-induced epitope retrieval by 1mM EDTA in 10mM Tris, pH8.5, 120°C for 3min, [TA804355])



Immunohistochemical staining of paraffin-embedded Human pancreas tissue within the normal limits using anti-MTDH mouse monoclonal antibody. (Heat-induced epitope retrieval by 1mM EDTA in 10mM Tris, pH8.5, 120°C for 3min, [TA804355])