

Product datasheet for **TA804342BM**

Macrophage Inflammatory Protein 3 beta (CCL19) Mouse Monoclonal Antibody (HRP conjugated) [Clone ID: OTI6A3]

Product data:

Product Type:	Primary Antibodies
Clone Name:	OTI6A3
Applications:	WB
Recommended Dilution:	WB 1:2000
Reactivity:	Human
Host:	Mouse
Isotype:	IgG1
Clonality:	Monoclonal
Immunogen:	Human recombinant protein fragment corresponding to amino acids 22-98 of human CCL19 (NP_006265) produced in E.coli.
Formulation:	PBS (pH 7.3) containing 1% BSA, 50% glycerol.
Concentration:	0.5 mg/ml
Purification:	Purified from mouse ascites fluids or tissue culture supernatant by affinity chromatography (protein A/G)
Conjugation:	HRP
Storage:	Store at -20°C as received.
Stability:	Stable for 12 months from date of receipt.
Predicted Protein Size:	8.8 kDa
Gene Name:	C-C motif chemokine ligand 19
Database Link:	NP_006265 Entrez Gene 6363 Human Q99731



[View online »](#)

Background:

This gene is one of several CC cytokine genes clustered on the p-arm of chromosome 9. Cytokines are a family of secreted proteins involved in immunoregulatory and inflammatory processes. The CC cytokines are proteins characterized by two adjacent cysteines. The cytokine encoded by this gene may play a role in normal lymphocyte recirculation and homing. It also plays an important role in trafficking of T cells in thymus, and in T cell and B cell migration to secondary lymphoid organs. It specifically binds to chemokine receptor CCR7. [provided by RefSeq, Jul 2008]

Synonyms:

CKb11; ELC; MIP-3b; MIP3B; SCYA19

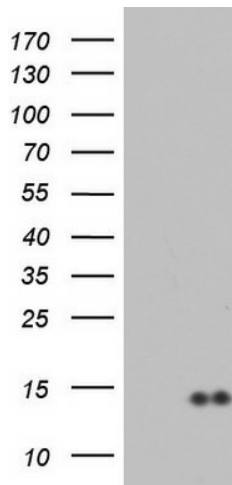
Protein Families:

Druggable Genome, Secreted Protein

Protein Pathways:

Chemokine signaling pathway, Cytokine-cytokine receptor interaction

Product images:



HEK293T cells were transfected with the pCMV6-ENTRY control (Cat# [PS100001], Left lane) or pCMV6-ENTRY CCL19 (Cat# [RC206523], Right lane) cDNA for 48 hrs and lysed. Equivalent amounts of cell lysates (5 ug per lane) were separated by SDS-PAGE and immunoblotted with anti-CCL19(Cat# [TA804342]). Positive lysates [LY401889] (100ug) and [LC401889] (20ug) can be purchased separately from OriGene.