

Product datasheet for **TA804327BM**

XLF (NHEJ1) Mouse Monoclonal Antibody (HRP conjugated) [Clone ID: OTI1B5]

Product data:

Product Type:	Primary Antibodies
Clone Name:	OTI1B5
Applications:	IHC, WB
Recommended Dilution:	WB 1:2000, IHC 1:150
Reactivity:	Human
Host:	Mouse
Isotype:	IgG1
Clonality:	Monoclonal
Immunogen:	Full length human recombinant protein of human NHEJ1 (NP_079058) produced in HEK293T cell.
Formulation:	PBS (pH 7.3) containing 1% BSA, 50% glycerol.
Concentration:	0.5 mg/ml
Purification:	Purified from mouse ascites fluids or tissue culture supernatant by affinity chromatography (protein A/G)
Conjugation:	HRP
Storage:	Store at -20°C as received.
Stability:	Stable for 12 months from date of receipt.
Predicted Protein Size:	33.2 kDa
Gene Name:	non-homologous end joining factor 1
Database Link:	NP_079058 Entrez Gene 79840 Human Q9H9Q4
Background:	Double-strand breaks in DNA result from genotoxic stresses and are among the most damaging of DNA lesions. This gene encodes a DNA repair factor essential for the nonhomologous end-joining pathway, which preferentially mediates repair of double-stranded breaks. Mutations in this gene cause different kinds of severe combined immunodeficiency disorders. [provided by RefSeq, Jul

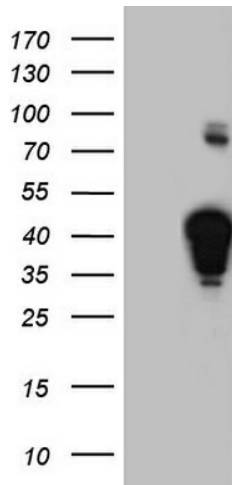


[View online »](#)

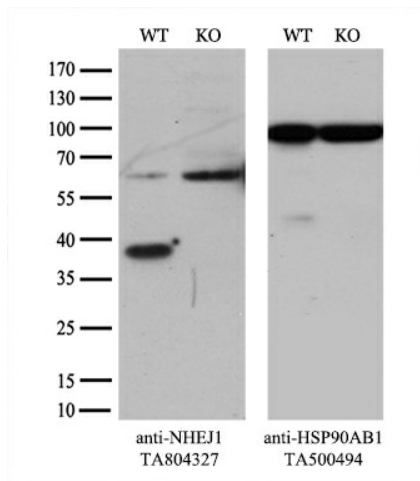
Synonyms: XLF

Protein Pathways: Non-homologous end-joining

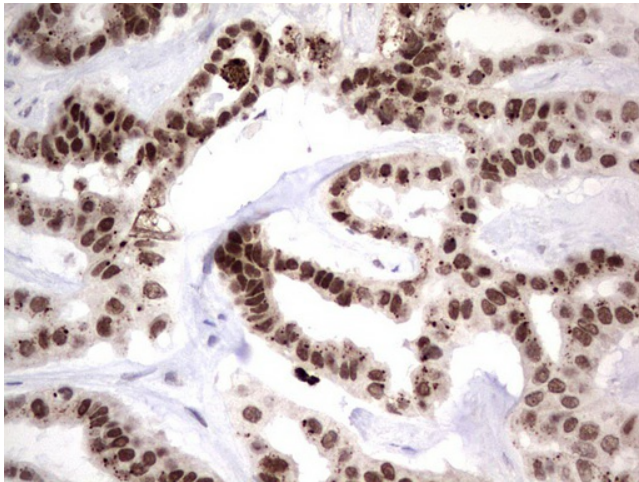
Product images:



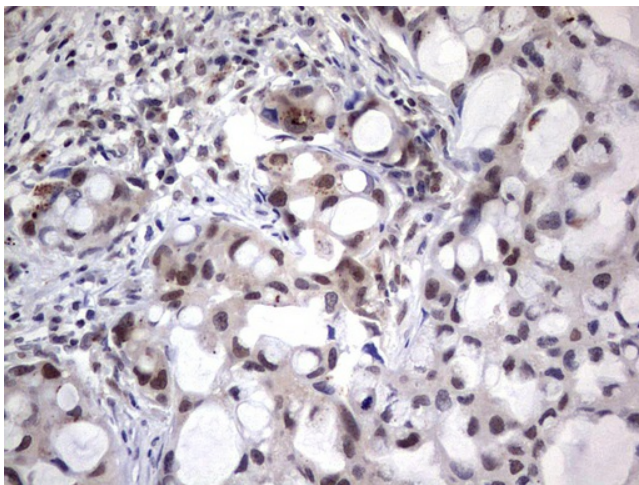
HEK293T cells were transfected with the pCMV6-ENTRY control (Left lane) or pCMV6-ENTRY NHEJ1 ([RC203393], Right lane) cDNA for 48 hrs and lysed. Equivalent amounts of cell lysates (5 ug per lane) were separated by SDS-PAGE and immunoblotted with anti-NHEJ1. Positive lysates [LY403031] (100ug) and [LC403031] (20ug) can be purchased separately from OriGene.



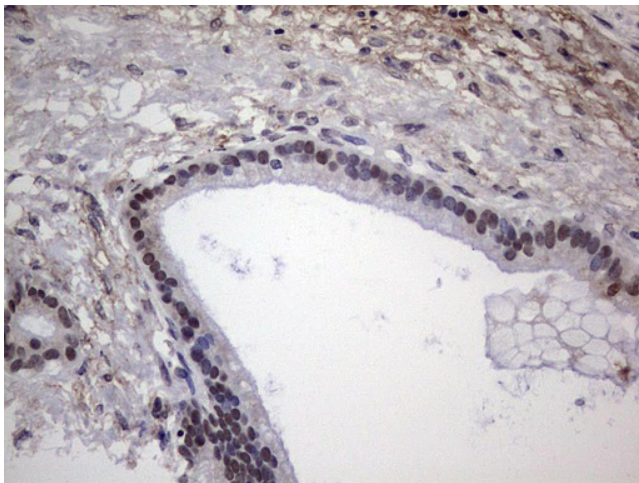
Equivalent amounts of cell lysates (10 ug per lane) of wild-type HeLa cells (WT, Cat# LC810HELA) and NHEJ1-Knockout HeLa cells (KO, Cat# [LC831412]) were separated by SDS-PAGE and immunoblotted with anti-NHEJ1 monoclonal antibody [TA804327] (1:100). Then the blotted membrane was stripped and reprobed with anti-HSP90 antibody as a loading control.



Immunohistochemical staining of paraffin-embedded Carcinoma of Human liver tissue using anti-NHEJ1 Mouse monoclonal antibody. (TA804327); heat-induced epitope retrieval by 1mM EDTA in 10mM Tris, pH8.5, 120°C for 3min)



Immunohistochemical staining of paraffin-embedded Carcinoma of Human lung tissue using anti-NHEJ1 Mouse monoclonal antibody. (TA804327); heat-induced epitope retrieval by 1mM EDTA in 10mM Tris, pH8.5, 120°C for 3min)



Immunohistochemical staining of paraffin-embedded Carcinoma of Human pancreas tissue using anti-NHEJ1 Mouse monoclonal antibody. (TA804327); heat-induced epitope retrieval by 1mM EDTA in 10mM Tris, pH8.5, 120°C for 3min)