

## Product datasheet for **TA804323BM**

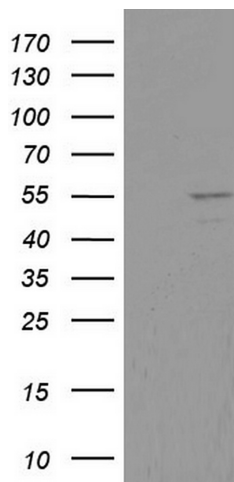
### DDX6 Mouse Monoclonal Antibody (HRP conjugated) [Clone ID: OTI2D6]

#### Product data:

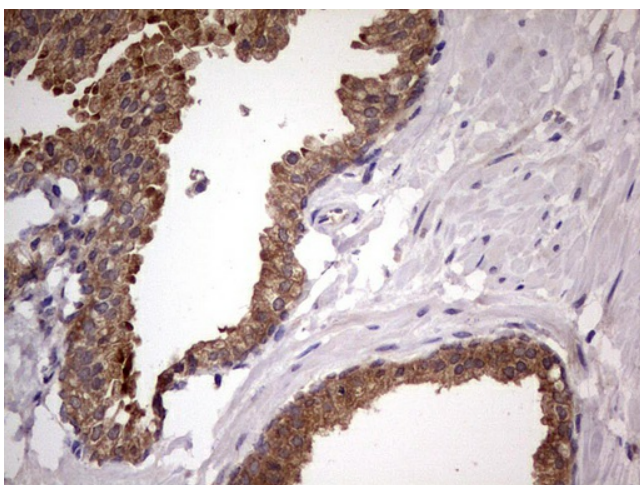
Product Type:	Primary Antibodies
Clone Name:	OTI2D6
Applications:	IHC, WB
Recommended Dilution:	WB 1:500, IHC 1:150
Reactivity:	Human, Mouse, Rat
Host:	Mouse
Isotype:	IgG2a
Clonality:	Monoclonal
Immunogen:	Human recombinant protein fragment corresponding to amino acids 1-298 of human DDX6 (NP_004388) produced in E.coli.
Formulation:	PBS (pH 7.3) containing 1% BSA, 50% glycerol.
Concentration:	0.5 mg/ml
Purification:	Purified from mouse ascites fluids or tissue culture supernatant by affinity chromatography (protein A/G)
Conjugation:	HRP
Storage:	Store at -20°C as received.
Stability:	Stable for 12 months from date of receipt.
Predicted Protein Size:	54.2 kDa
Gene Name:	DEAD-box helicase 6
Database Link:	<a href="#">NP_004388</a> <a href="#">Entrez Gene 13209 Mouse</a> <a href="#">Entrez Gene 500988 Rat</a> <a href="#">Entrez Gene 1656 Human</a> <a href="#">P26196</a>
Synonyms:	HLR2; P54; RCK
Protein Pathways:	RNA degradation



[View online »](#)

**Product images:**

HEK293T cells were transfected with the pCMV6-ENTRY control (Cat# [PS100001], Left lane) or pCMV6-ENTRY DDX6 (Cat# [RC209431], Right lane) cDNA for 48 hrs and lysed. Equivalent amounts of cell lysates (5 ug per lane) were separated by SDS-PAGE and immunoblotted with anti-DDX6 (Cat# [TA804323]). Positive lysates [LY401399] (100ug) and [LC401399] (20ug) can be purchased separately from OriGene.



Immunohistochemical staining of paraffin-embedded Carcinoma of Human prostate tissue using anti-DDX6 mouse monoclonal antibody. (Heat-induced epitope retrieval by 1mM EDTA in 10mM Tris, pH8.5, 120°C for 3min, [TA804323])