

## Product datasheet for **TA804316AM**

### UFD1 Mouse Monoclonal Antibody (Biotin conjugated) [Clone ID: OTI3B4]

#### Product data:

Product Type:	Primary Antibodies
Clone Name:	OTI3B4
Applications:	WB
Recommended Dilution:	WB 1:2000
Reactivity:	Human
Host:	Mouse
Isotype:	IgG1
Clonality:	Monoclonal
Immunogen:	Full length human recombinant protein of human UFD1L (NP_005650) produced in E.coli.
Formulation:	PBS (pH 7.3) containing 1% BSA, 50% glycerol and 0.02% sodium azide.
Concentration:	0.5 mg/ml
Purification:	Purified from mouse ascites fluids or tissue culture supernatant by affinity chromatography (protein A/G)
Conjugation:	Biotin
Storage:	Store at -20°C as received.
Stability:	Stable for 12 months from date of receipt.
Predicted Protein Size:	34.3 kDa
Gene Name:	ubiquitin fusion degradation 1 like (yeast)
Database Link:	<a href="#">NP_005650</a> <a href="#">Entrez Gene 7353 Human</a> <a href="#">Q92890</a>

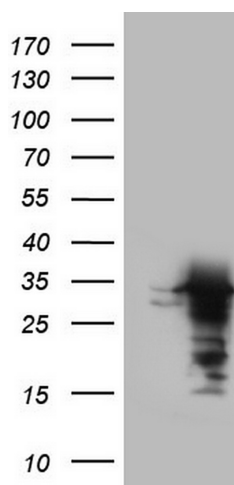
**Background:** The protein encoded by this gene forms a complex with two other proteins, nuclear protein localization-4 and valosin-containing protein, and this complex is necessary for the degradation of ubiquitinated proteins. In addition, this complex controls the disassembly of the mitotic spindle and the formation of a closed nuclear envelope after mitosis. Mutations in this gene have been associated with Catch 22 syndrome as well as cardiac and craniofacial defects. Alternative splicing results in multiple transcript variants encoding different isoforms. A related pseudogene has been identified on chromosome 18. [provided by RefSeq, Jun 2009]



[View online »](#)

Synonyms: UFD1

### Product images:



HEK293T cells were transfected with the pCMV6-ENTRY control (Left lane) or pCMV6-ENTRY UFD1L ([RC202989], Right lane) cDNA for 48 hrs and lysed. Equivalent amounts of cell lysates (5 ug per lane) were separated by SDS-PAGE and immunoblotted with anti-UFD1L. Positive lysates [LY417150] (100ug) and [LC417150] (20ug) can be purchased separately from OriGene.