

Product datasheet for **TA804311AM**

Pancreatic alpha amylase (AMY2A) Mouse Monoclonal Antibody (Biotin conjugated) [Clone ID: OT11E3]

Product data:

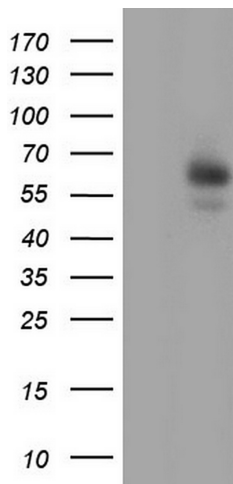
Product Type:	Primary Antibodies
Clone Name:	OT11E3
Applications:	IHC, WB
Recommended Dilution:	WB 1:2000, IHC 1:150
Reactivity:	Human
Host:	Mouse
Isotype:	IgG2b
Clonality:	Monoclonal
Immunogen:	Human recombinant protein fragment corresponding to amino acids 135-408 of human AMY2A (NP_000690) produced in E.coli.
Formulation:	PBS (pH 7.3) containing 1% BSA, 50% glycerol and 0.02% sodium azide.
Concentration:	0.5 mg/ml
Purification:	Purified from mouse ascites fluids or tissue culture supernatant by affinity chromatography (protein A/G)
Conjugation:	Biotin
Storage:	Store at -20°C as received.
Stability:	Stable for 12 months from date of receipt.
Predicted Protein Size:	55.8 kDa
Gene Name:	amylase, alpha 2A (pancreatic)
Database Link:	NP_000690 Entrez Gene 279 Human P04746
Background:	Amylases are secreted proteins that hydrolyze 1,4-alpha-glucoside bonds in oligosaccharides and polysaccharides, and thus catalyze the first step in digestion of dietary starch and glycogen. The human genome has a cluster of several amylase genes that are expressed at high levels in either salivary gland or pancreas. This gene encodes an amylase isoenzyme produced by the pancreas. [provided by RefSeq, Jul 2008]



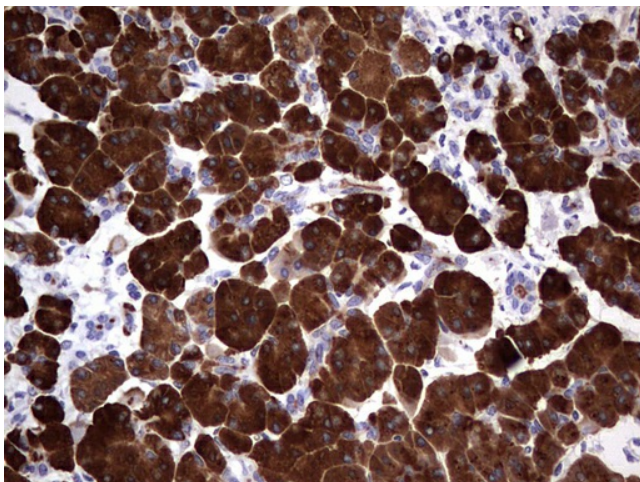
[View online »](#)

Synonyms: AMY2; PA
Protein Families: Secreted Protein
Protein Pathways: Metabolic pathways, Starch and sucrose metabolism

Product images:



HEK293T cells were transfected with the pCMV6-ENTRY control (Left lane) or pCMV6-ENTRY AMY2A ([RC202805], Right lane) cDNA for 48 hrs and lysed. Equivalent amounts of cell lysates (5 ug per lane) were separated by SDS-PAGE and immunoblotted with anti-AMY2A. Positive lysates [LY424559] (100ug) and [LC424559] (20ug) can be purchased separately from OriGene.



Immunohistochemical staining of paraffin-embedded Human pancreas tissue within the normal limits using anti-AMY2A mouse monoclonal antibody. (Heat-induced epitope retrieval by 1mM EDTA in 10mM Tris, pH8.5, 120°C for 3min, [TA804311])