

## Product datasheet for **TA804299M**

### **S100 alpha 6 (S100A6) Mouse Monoclonal Antibody [Clone ID: OTI5A10]**

#### **Product data:**

Product Type:	Primary Antibodies
Clone Name:	OTI5A10
Applications:	IHC, WB
Recommended Dilution:	WB 1:2000, IHC 1:150
Reactivity:	Human, Mouse, Rat
Host:	Mouse
Isotype:	IgG1
Clonality:	Monoclonal
Immunogen:	Full length human recombinant protein of human S100A6 (NP_055439) produced in E.coli.
Formulation:	PBS (pH 7.3) containing 1% BSA, 50% glycerol and 0.02% sodium azide.
Concentration:	1 mg/ml
Purification:	Purified from mouse ascites fluids or tissue culture supernatant by affinity chromatography (protein A/G)
Conjugation:	Unconjugated
Storage:	Store at -20°C as received.
Stability:	Stable for 12 months from date of receipt.
Predicted Protein Size:	10 kDa
Gene Name:	S100 calcium binding protein A6
Database Link:	<a href="#">NP_055439</a> <a href="#">Entrez Gene 20200 Mouse</a> <a href="#">Entrez Gene 85247 Rat</a> <a href="#">Entrez Gene 6277 Human</a> <a href="#">P06703</a>



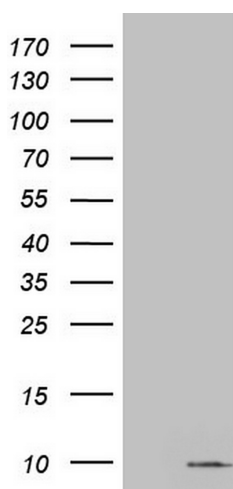
[View online »](#)

**Background:**

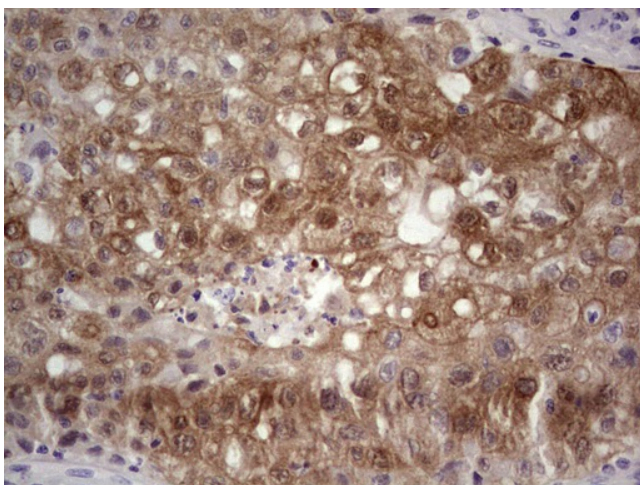
The protein encoded by this gene is a member of the S100 family of proteins containing 2 EF-hand calcium-binding motifs. S100 proteins are localized in the cytoplasm and/or nucleus of a wide range of cells, and involved in the regulation of a number of cellular processes such as cell cycle progression and differentiation. S100 genes include at least 13 members which are located as a cluster on chromosome 1q21. This protein may function in stimulation of Ca<sup>2+</sup>-dependent insulin release, stimulation of prolactin secretion, and exocytosis. Chromosomal rearrangements and altered expression of this gene have been implicated in melanoma. [provided by RefSeq, Jul 2008]

**Synonyms:**

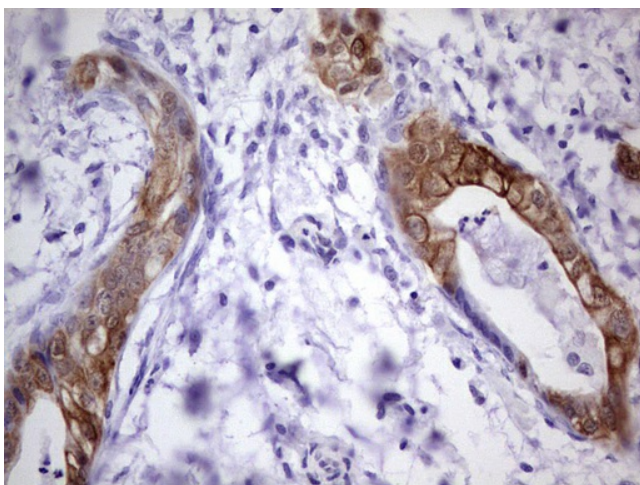
2A9; 5B10; CABP; CACY; PRA

**Product images:**


HEK293T cells were transfected with the pCMV6-ENTRY control (Cat# [PS100001], Left lane) or pCMV6-ENTRY S100A6 (Cat# [RC203951], Right lane) cDNA for 48 hrs and lysed. Equivalent amounts of cell lysates (5 ug per lane) were separated by SDS-PAGE and immunoblotted with anti-S100A6 (Cat# [TA804299]). Positive lysates [LY415155] (100ug) and [LC415155] (20ug) can be purchased separately from OriGene.



Immunohistochemical staining of paraffin-embedded Carcinoma of Human lung tissue using anti-S100A6 mouse monoclonal antibody. Heat-induced epitope retrieval by EDTA solution buffer pH 8.0 at 120°C for 3 min.



Immunohistochemical staining of paraffin-embedded Carcinoma of Human pancreas tissue using anti-S100A6 mouse monoclonal antibody. Heat-induced epitope retrieval by EDTA solution buffer pH 8.0 at 120°C for 3 min.