

Product datasheet for **TA804284M**

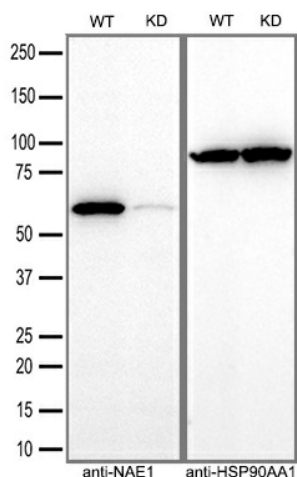
APPBP1 (NAE1) Mouse Monoclonal Antibody [Clone ID: OTI1A8]

Product data:

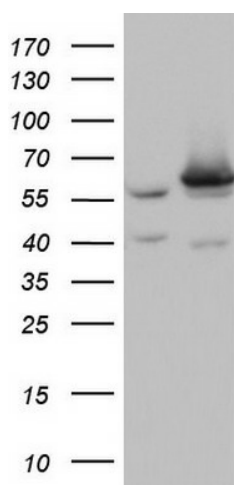
Product Type:	Primary Antibodies
Clone Name:	OTI1A8
Applications:	WB
Recommended Dilution:	WB 1:500
Reactivity:	Human, Mouse, Rat
Host:	Mouse
Isotype:	IgG1
Clonality:	Monoclonal
Immunogen:	Human recombinant protein fragment corresponding to amino acids 1-274 of human NAE1 (NP_001018170) produced in E.coli.
Formulation:	PBS (pH 7.3) containing 1% BSA, 50% glycerol and 0.02% sodium azide.
Concentration:	1 mg/ml
Purification:	Purified from mouse ascites fluids or tissue culture supernatant by affinity chromatography (protein A/G)
Conjugation:	Unconjugated
Storage:	Store at -20°C as received.
Stability:	Stable for 12 months from date of receipt.
Predicted Protein Size:	50.4 kDa
Gene Name:	NEDD8 activating enzyme E1 subunit 1
Database Link:	NP_001018170 Entrez Gene 84019 Rat Entrez Gene 234664 Mouse Entrez Gene 8883 Human Q13564
Synonyms:	A-116A10.1; APPBP1; HPP1; ula-1
Protein Pathways:	Alzheimer's disease


[View online »](#)

Product images:



Equivalent amounts of cell lysates (30 ug per lane) of wild-type HeLa cells (WT) and NAE1-Knockdown HeLa cells (KD) were separated by SDS-PAGE and immunoblotted with anti-NAE1 monoclonal antibody [TA804284] (1:2000). Then the blotted membrane was stripped and reprobed with anti-HSP90AA1 antibody as a loading control.



HEK293T cells were transfected with the pCMV6-ENTRY control (Left lane) or pCMV6-ENTRY NAE1 ([RC201326], Right lane) cDNA for 48 hrs and lysed. Equivalent amounts of cell lysates (5 ug per lane) were separated by SDS-PAGE and immunoblotted with anti-NAE1. Positive lysates [LY422668] (100ug) and [LC422668] (20ug) can be purchased separately from OriGene.