

## Product datasheet for **TA804252AM**

### **TFB1M Mouse Monoclonal Antibody (Biotin conjugated) [Clone ID: OTI10H8]**

#### **Product data:**

<b>Product Type:</b>	Primary Antibodies
<b>Clone Name:</b>	OTI10H8
<b>Applications:</b>	WB
<b>Recommended Dilution:</b>	WB 1:2000
<b>Reactivity:</b>	Human, Mouse, Rat
<b>Host:</b>	Mouse
<b>Isotype:</b>	IgG1
<b>Clonality:</b>	Monoclonal
<b>Immunogen:</b>	Human recombinant protein fragment corresponding to amino acids 116-346 of human TFB1M (NP_057104) produced in E.coli.
<b>Formulation:</b>	PBS (pH 7.3) containing 1% BSA, 50% glycerol and 0.02% sodium azide.
<b>Concentration:</b>	0.5 mg/ml
<b>Purification:</b>	Purified from mouse ascites fluids or tissue culture supernatant by affinity chromatography (protein A/G)
<b>Conjugation:</b>	Biotin
<b>Storage:</b>	Store at -20°C as received.
<b>Stability:</b>	Stable for 12 months from date of receipt.
<b>Predicted Protein Size:</b>	39.4 kDa
<b>Gene Name:</b>	transcription factor B1, mitochondrial
<b>Database Link:</b>	<a href="#">NP_057104</a> <a href="#">Entrez Gene 308140 Rat</a> <a href="#">Entrez Gene 51106 Human</a> <a href="#">Q8WVM0</a>
<b>Background:</b>	The protein encoded by this gene is a dimethyltransferase that methylates the conserved stem loop of mitochondrial 12S rRNA. The encoded protein also is part of the basal mitochondrial transcription complex and is necessary for mitochondrial gene expression. The methylation and transcriptional activities of this protein are independent of one another. Variations in this gene may influence the severity of aminoglycoside-induced deafness (AID). [provided by RefSeq, Aug 2010]

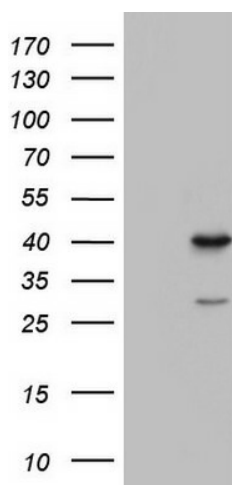


[View online »](#)

Synonyms: CGI-75; CGI75; mtTFB; mtTFB1

Protein Families: Transcription Factors

### Product images:



HEK293T cells were transfected with the pCMV6-ENTRY control (Left lane) or pCMV6-ENTRY TFB1M ([RC204643], Right lane) cDNA for 48 hrs and lysed. Equivalent amounts of cell lysates (5 ug per lane) were separated by SDS-PAGE and immunoblotted with anti-TFB1M. Positive lysates [LY402490] (100ug) and [LC402490] (20ug) can be purchased separately from OriGene.