

## Product datasheet for **TA804244S**

### Calretinin (CALB2) Mouse Monoclonal Antibody [Clone ID: OTI1A1]

#### Product data:

Product Type:	Primary Antibodies
Clone Name:	OTI1A1
Applications:	WB
Recommended Dilution:	WB 1:500
Reactivity:	Human, Mouse, Rat
Host:	Mouse
Isotype:	IgG1
Clonality:	Monoclonal
Immunogen:	Full length human recombinant protein of human CALB2 (NP_001731) produced in HEK293T cell.
Formulation:	PBS (pH 7.3) containing 1% BSA, 50% glycerol and 0.02% sodium azide.
Concentration:	1 mg/ml
Purification:	Purified from mouse ascites fluids or tissue culture supernatant by affinity chromatography (protein A/G)
Conjugation:	Unconjugated
Storage:	Store at -20°C as received.
Stability:	Stable for 12 months from date of receipt.
Predicted Protein Size:	31.4 kDa
Gene Name:	calbindin 2
Database Link:	<a href="#">NP_001731</a> <a href="#">Entrez Gene 12308 Mouse</a> <a href="#">Entrez Gene 117059 Rat</a> <a href="#">Entrez Gene 794 Human</a> <a href="#">P22676</a>



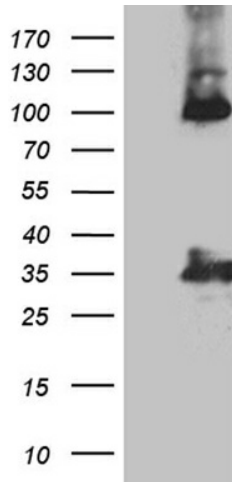
[View online »](#)

**Background:**

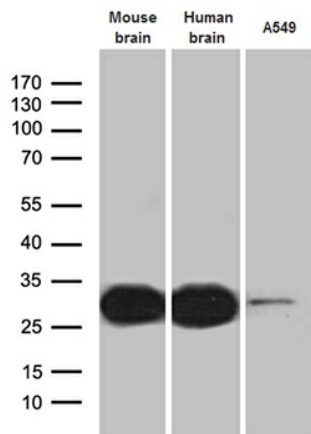
This gene encodes an intracellular calcium-binding protein belonging to the troponin C superfamily. Members of this protein family have six EF-hand domains which bind calcium. This protein plays a role in diverse cellular functions, including message targeting and intracellular calcium buffering. It also functions as a modulator of neuronal excitability, and is a diagnostic marker for some human diseases, including Hirschsprung disease and some cancers. Alternative splicing results in multiple transcript variants. [provided by RefSeq, Jun 2010]

**Synonyms:**

CAB29; CAL2; CR

**Product images:**


HEK293T cells were transfected with the pCMV6-ENTRY control (Cat# [PS100001], Left lane) or pCMV6-ENTRY CALB2 (Cat# [RC201924], Right lane) cDNA for 48 hrs and lysed. Equivalent amounts of cell lysates (5 ug per lane) were separated by SDS-PAGE and immunoblotted with anti-CALB2 (Cat# [TA804244]). Positive lysates [LY400659] (100ug) and [LC400659] (20ug) can be purchased separately from OriGene.



Western blot analysis of extracts (35ug) from A549 cell line and 2 tissue lysates by using anti-CALB2 monoclonal antibody (1:500).