

Product datasheet for **TA804243M**

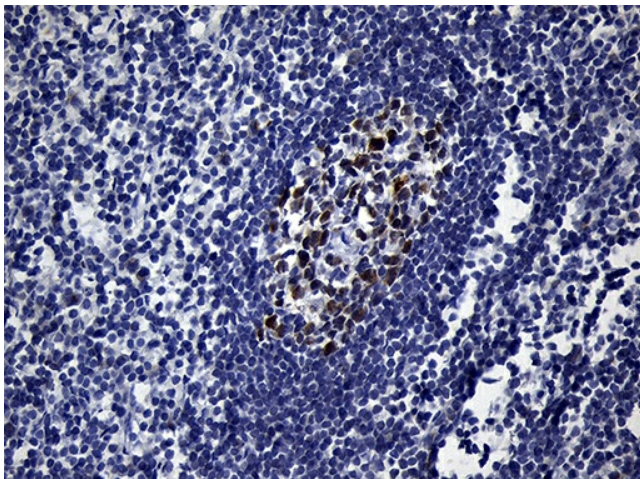
bcl 6 (BCL6) Mouse Monoclonal Antibody [Clone ID: OT18A3]

Product data:

Product Type:	Primary Antibodies
Clone Name:	OT18A3
Applications:	IHC
Recommended Dilution:	IHC 1:500
Reactivity:	Human, Mouse, Rat
Host:	Mouse
Isotype:	IgG2a
Clonality:	Monoclonal
Immunogen:	Human recombinant protein fragment corresponding to amino acids 1-300 of human BCL6 (NP_001697) produced in E.coli.
Formulation:	PBS (pH 7.3) containing 1% BSA, 50% glycerol and 0.02% sodium azide.
Concentration:	1 mg/ml
Purification:	Purified from mouse ascites fluids or tissue culture supernatant by affinity chromatography (protein A/G)
Conjugation:	Unconjugated
Storage:	Store at -20°C as received.
Stability:	Stable for 12 months from date of receipt.
Predicted Protein Size:	78.7 kDa
Gene Name:	B-cell CLL/lymphoma 6
Database Link:	NP_001697 Entrez Gene 12053 Mouse Entrez Gene 303836 Rat Entrez Gene 604 Human P41182
Synonyms:	BCL5; BCL6A; LAZ3; ZBTB27; ZNF51
Protein Families:	Druggable Genome, Transcription Factors



[View online »](#)

Product images:

Immunohistochemical staining of paraffin-embedded Human lymph node tissue within the normal limits using anti-BCL6 mouse monoclonal antibody. Heat-induced epitope retrieval by EDTA solution buffer pH 8.0 at 120°C for 3 min.