

## Product datasheet for **TA804221M**

### SP17 (SPA17) Mouse Monoclonal Antibody [Clone ID: OTI3E9]

#### Product data:

Product Type:	Primary Antibodies
Clone Name:	OTI3E9
Applications:	WB
Recommended Dilution:	WB 1:2000
Reactivity:	Human
Host:	Mouse
Isotype:	IgG1
Clonality:	Monoclonal
Immunogen:	Full length human recombinant protein of human SPA17 (NP_059121) produced in E.coli.
Formulation:	PBS (pH 7.3) containing 1% BSA, 50% glycerol and 0.02% sodium azide.
Concentration:	1 mg/ml
Purification:	Purified from mouse ascites fluids or tissue culture supernatant by affinity chromatography (protein A/G)
Conjugation:	Unconjugated
Storage:	Store at -20°C as received.
Stability:	Stable for 12 months from date of receipt.
Predicted Protein Size:	17.2 kDa
Gene Name:	sperm autoantigenic protein 17
Database Link:	<a href="#">NP_059121</a> <a href="#">Entrez Gene 53340 Human</a> <a href="#">Q15506</a>



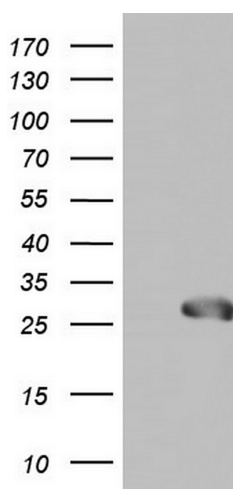
[View online »](#)

**Background:**

This gene encodes a protein present at the cell surface. The N-terminus has sequence similarity to human cAMP-dependent protein kinase A (PKA) type II alpha regulatory subunit (RIIa) while the C-terminus has an IQ calmodulin-binding motif. The central portion of the protein has carbohydrate binding motifs and likely functions in cell-cell adhesion. The protein was initially characterized by its involvement in the binding of sperm to the zona pellucida of the oocyte. Recent studies indicate that it is also involved in additional cell-cell adhesion functions such as immune cell migration and metastasis. A retrotransposed pseudogene is present on chromosome 10q22. [provided by RefSeq, Jan 2009]

**Synonyms:**

CT22; SP17; SP17-1

**Product images:**


HEK293T cells were transfected with the pCMV6-ENTRY control (Left lane) or pCMV6-ENTRY SPA17 ([RC207076], Right lane) cDNA for 48 hrs and lysed. Equivalent amounts of cell lysates (5 ug per lane) were separated by SDS-PAGE and immunoblotted with anti-SPA17. Positive lysates [LY413783] (100ug) and [LC413783] (20ug) can be purchased separately from OriGene.