

Product datasheet for **TA804218AM**

Calprotectin (S100A9) Mouse Monoclonal Antibody (Biotin conjugated) [Clone ID: OTI8C2]

Product data:

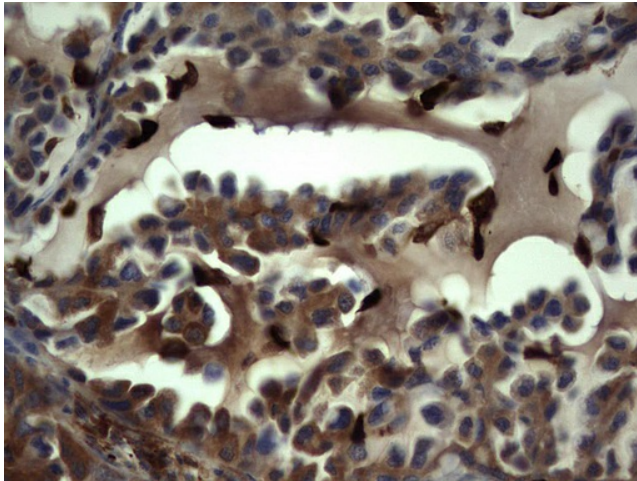
Product Type:	Primary Antibodies
Clone Name:	OTI8C2
Applications:	IHC
Recommended Dilution:	IHC 1:150
Reactivity:	Human
Host:	Mouse
Isotype:	IgG1
Clonality:	Monoclonal
Immunogen:	Full length human recombinant protein of human S100A9 (NP_002956) produced in SF9 cell.
Formulation:	PBS (pH 7.3) containing 1% BSA, 50% glycerol and 0.02% sodium azide.
Concentration:	0.5 mg/ml
Purification:	Purified from mouse ascites fluids or tissue culture supernatant by affinity chromatography (protein A/G)
Conjugation:	Biotin
Storage:	Store at -20°C as received.
Stability:	Stable for 12 months from date of receipt.
Predicted Protein Size:	13.1 kDa
Gene Name:	S100 calcium binding protein A9
Database Link:	NP_002956 Entrez Gene 6280 Human P06702
Background:	The protein encoded by this gene is a member of the S100 family of proteins containing 2 EF-hand calcium-binding motifs. S100 proteins are localized in the cytoplasm and/or nucleus of a wide range of cells, and involved in the regulation of a number of cellular processes such as cell cycle progression and differentiation. S100 genes include at least 13 members which are located as a cluster on chromosome 1q21. This protein may function in the inhibition of casein kinase and altered expression of this protein is associated with the disease cystic fibrosis. [provided by RefSeq, Jul 2008]



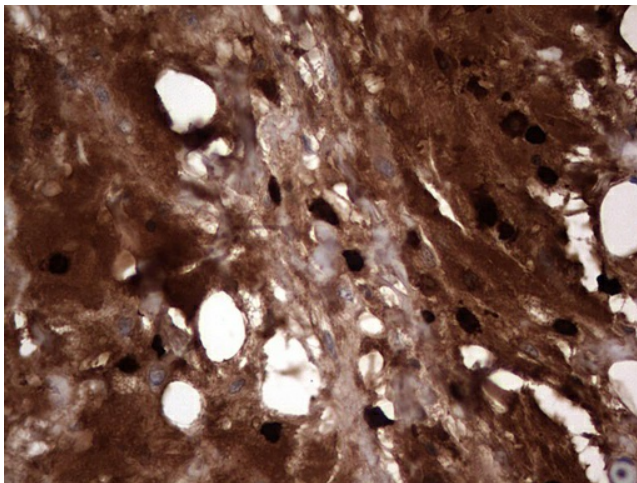
[View online »](#)

Synonyms: 60B8AG; CAGB; CFAG; CGLB; L1AG; LIAG; MAC387; MIF; MRP14; NIF; P14

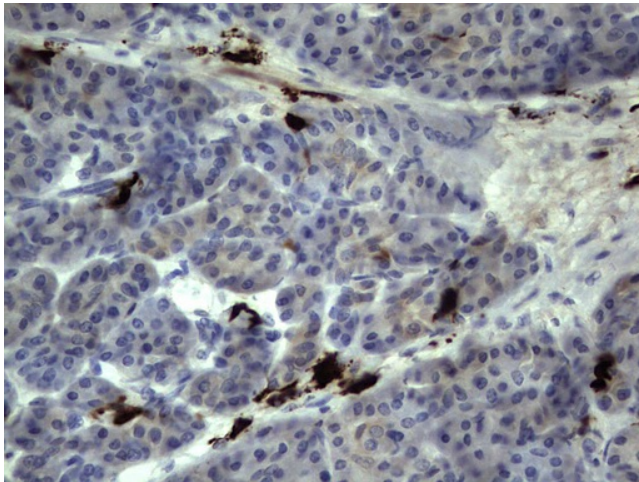
Product images:



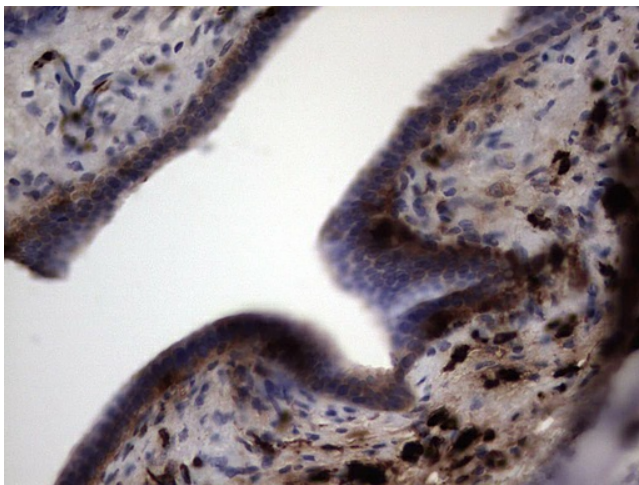
Immunohistochemical staining of paraffin-embedded Carcinoma of Human lung tissue using anti-S100A9 mouse monoclonal antibody. (Heat-induced epitope retrieval by 1mM EDTA in 10mM Tris, pH8.5, 120°C for 3min, [TA804218])



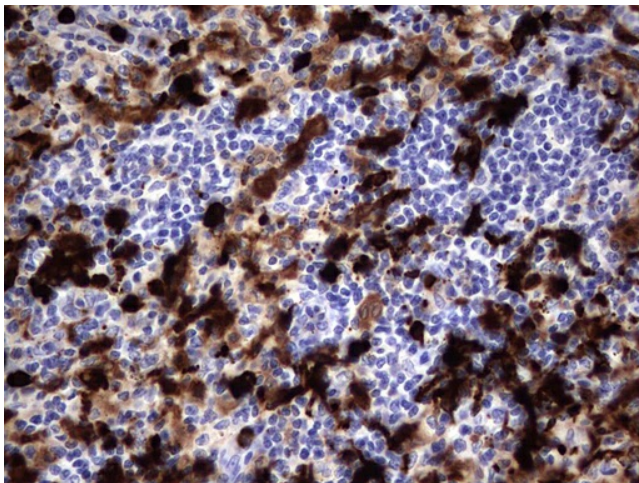
Immunohistochemical staining of paraffin-embedded Adenocarcinoma of Human ovary tissue using anti-S100A9 mouse monoclonal antibody. (Heat-induced epitope retrieval by 1mM EDTA in 10mM Tris, pH8.5, 120°C for 3min, [TA804218])



Immunohistochemical staining of paraffin-embedded Human pancreas tissue within the normal limits using anti-S100A9 mouse monoclonal antibody. (Heat-induced epitope retrieval by 1mM EDTA in 10mM Tris, pH8.5, 120°C for 3min, [TA804218])



Immunohistochemical staining of paraffin-embedded Carcinoma of Human pancreas tissue using anti-S100A9 mouse monoclonal antibody. (Heat-induced epitope retrieval by 1mM EDTA in 10mM Tris, pH8.5, 120°C for 3min, [TA804218])



Immunohistochemical staining of paraffin-embedded Human lymph node tissue within the normal limits using anti-S100A9 mouse monoclonal antibody. (Heat-induced epitope retrieval by 1mM EDTA in 10mM Tris, pH8.5, 120°C for 3min, [TA804218])