

Product datasheet for **TA804200**

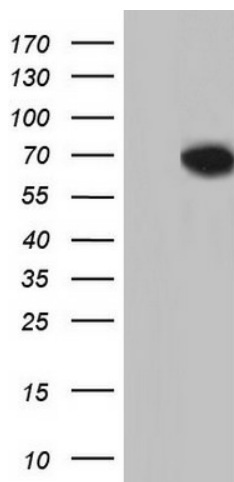
N4BP2L2 Mouse Monoclonal Antibody [Clone ID: OTI5A3]

Product data:

Product Type:	Primary Antibodies
Clone Name:	OTI5A3
Applications:	WB
Recommended Dilution:	WB 1:500
Reactivity:	Human
Host:	Mouse
Isotype:	IgG2a
Clonality:	Monoclonal
Immunogen:	Full length human recombinant protein of human N4BP2L2 (NP_055702) produced in E.coli.
Formulation:	PBS (pH 7.3) containing 1% BSA, 50% glycerol and 0.02% sodium azide.
Concentration:	1 mg/ml
Purification:	Purified from mouse ascites fluids or tissue culture supernatant by affinity chromatography (protein A/G)
Conjugation:	Unconjugated
Storage:	Store at -20°C as received.
Stability:	Stable for 12 months from date of receipt.
Predicted Protein Size:	67.3 kDa
Gene Name:	NEDD4 binding protein 2-like 2
Database Link:	NP_055702 Entrez Gene 10443 Human Q92802
Synonyms:	92M18.3; CG005; CG016; PFAAP5

[View online »](#)

Product images:



HEK293T cells were transfected with the pCMV6-ENTRY control (Left lane) or pCMV6-ENTRY N4BP2L2 ([RC202210], Right lane) cDNA for 48 hrs and lysed. Equivalent amounts of cell lysates (5 ug per lane) were separated by SDS-PAGE and immunoblotted with anti-N4BP2L2. Positive lysates [LY414958] (100ug) and [LC414958] (20ug) can be purchased separately from OriGene.