

## Product datasheet for **TA804199S**

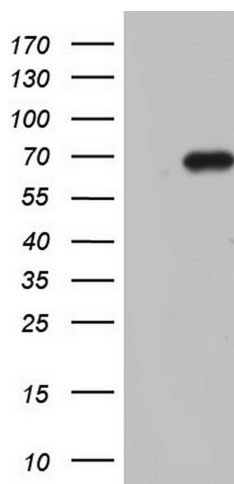
### **N4BP2L2 Mouse Monoclonal Antibody [Clone ID: OTI3G7]**

#### **Product data:**

Product Type:	Primary Antibodies
Clone Name:	OTI3G7
Applications:	WB
Recommended Dilution:	WB 1:2000
Reactivity:	Human
Host:	Mouse
Isotype:	IgG1
Clonality:	Monoclonal
Immunogen:	Full length human recombinant protein of human N4BP2L2 (NP_055702) produced in E.coli.
Formulation:	PBS (pH 7.3) containing 1% BSA, 50% glycerol and 0.02% sodium azide.
Concentration:	1 mg/ml
Purification:	Purified from mouse ascites fluids or tissue culture supernatant by affinity chromatography (protein A/G)
Conjugation:	Unconjugated
Storage:	Store at -20°C as received.
Stability:	Stable for 12 months from date of receipt.
Predicted Protein Size:	67.3 kDa
Gene Name:	NEDD4 binding protein 2-like 2
Database Link:	<a href="#">NP_055702</a> <a href="#">Entrez Gene 10443 Human</a> <a href="#">Q92802</a>
Synonyms:	92M18.3; CG005; CG016; PFAAP5



[View online »](#)

**Product images:**


HEK293T cells were transfected with the pCMV6-ENTRY control (Left lane) or pCMV6-ENTRY N4BP2L2 ([RC202210], Right lane) cDNA for 48 hrs and lysed. Equivalent amounts of cell lysates (5 ug per lane) were separated by SDS-PAGE and immunoblotted with anti-N4BP2L2. Positive lysates [LY414958] (100ug) and [LC414958] (20ug) can be purchased separately from OriGene.