

Product datasheet for **TA804198BM**

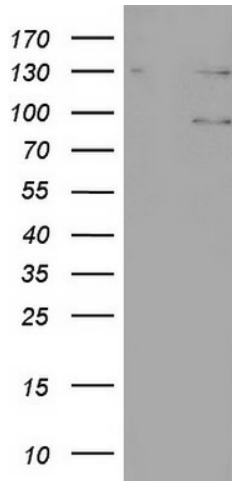
N4BP2L2 Mouse Monoclonal Antibody (HRP conjugated) [Clone ID: OTI1C8]

Product data:

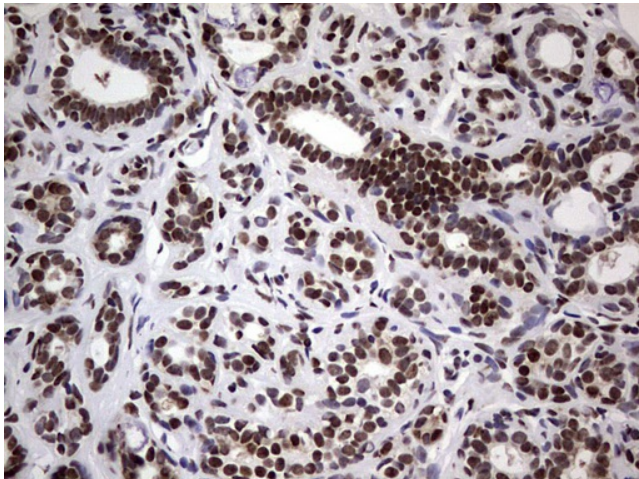
Product Type:	Primary Antibodies
Clone Name:	OTI1C8
Applications:	IHC, WB
Recommended Dilution:	WB 1:200, IHC 1:150
Reactivity:	Human
Host:	Mouse
Isotype:	IgG2a
Clonality:	Monoclonal
Immunogen:	Full length human recombinant protein of human N4BP2L2 (NP_055702) produced in E.coli.
Formulation:	PBS (pH 7.3) containing 1% BSA, 50% glycerol.
Concentration:	0.5 mg/ml
Purification:	Purified from mouse ascites fluids or tissue culture supernatant by affinity chromatography (protein A/G)
Conjugation:	HRP
Storage:	Store at -20°C as received.
Stability:	Stable for 12 months from date of receipt.
Predicted Protein Size:	67.3 kDa
Gene Name:	NEDD4 binding protein 2-like 2
Database Link:	NP_055702 Entrez Gene 10443 Human Q92802
Synonyms:	92M18.3; CG005; CG016; PFAAP5



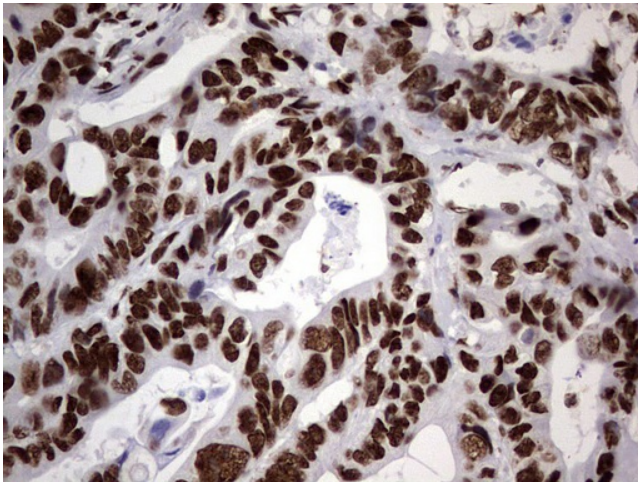
[View online »](#)

Product images:

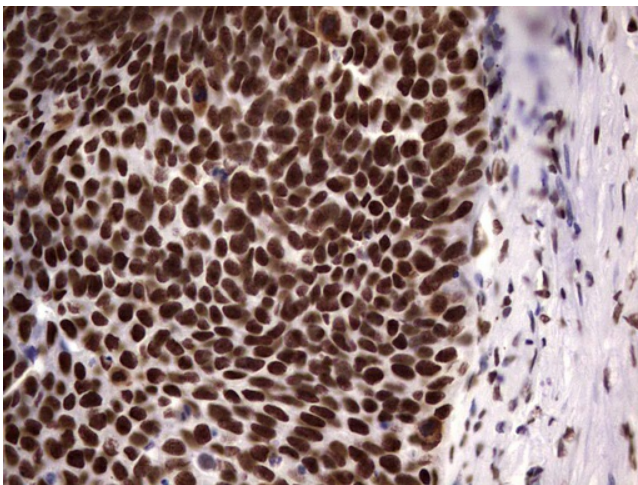
HEK293T cells were transfected with the pCMV6-ENTRY control (Cat# [PS100001], Left lane) or pCMV6-ENTRY N4BP2L2 (Cat# [RC202210], Right lane) cDNA for 48 hrs and lysed. Equivalent amounts of cell lysates (5 ug per lane) were separated by SDS-PAGE and immunoblotted with anti-N4BP2L2 (Cat# [TA804198]). Positive lysates [LY414958] (100ug) and [LC414958] (20ug) can be purchased separately from OriGene.



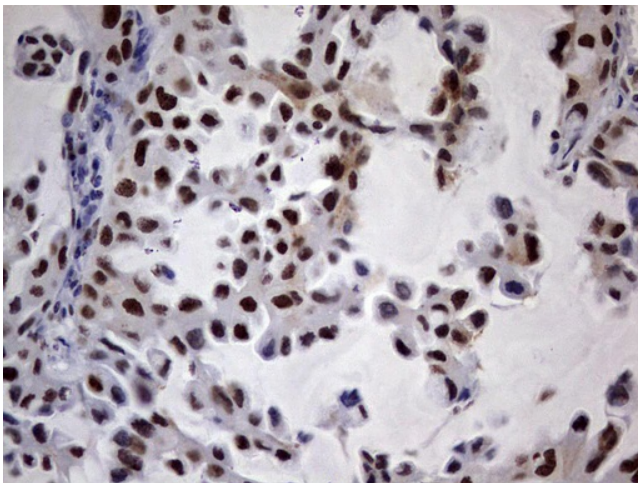
Immunohistochemical staining of paraffin-embedded Human breast tissue within the normal limits using anti-N4BP2L2 mouse monoclonal antibody. (Heat-induced epitope retrieval by 1mM EDTA in 10mM Tris, pH8.5, 120°C for 3min, [TA804198])



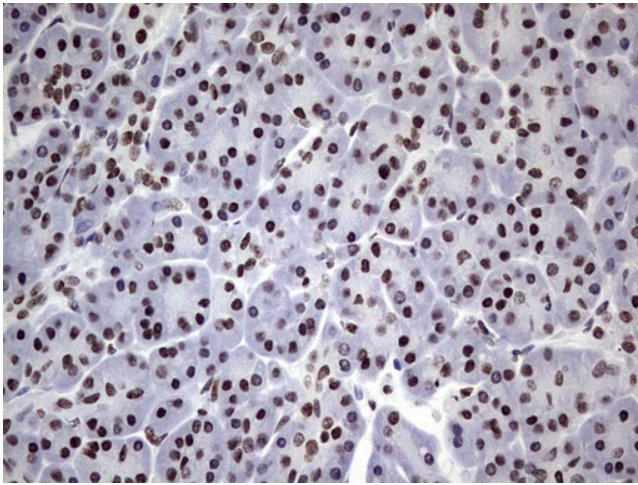
Immunohistochemical staining of paraffin-embedded Adenocarcinoma of Human colon tissue using anti-N4BP2L2 mouse monoclonal antibody. (Heat-induced epitope retrieval by 1mM EDTA in 10mM Tris, pH8.5, 120°C for 3min, [TA804198])



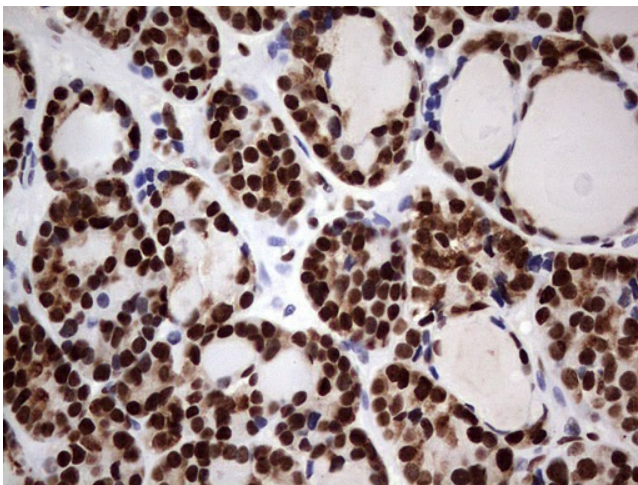
Immunohistochemical staining of paraffin-embedded Carcinoma of Human kidney tissue using anti-N4BP2L2 mouse monoclonal antibody. (Heat-induced epitope retrieval by 1mM EDTA in 10mM Tris, pH8.5, 120°C for 3min, [TA804198])



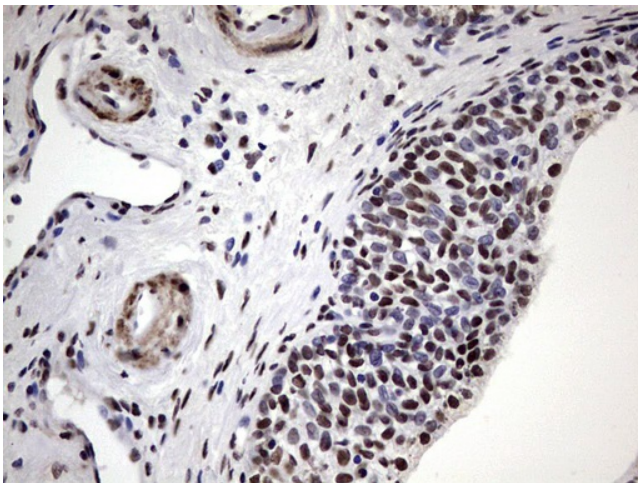
Immunohistochemical staining of paraffin-embedded Carcinoma of Human lung tissue using anti-N4BP2L2 mouse monoclonal antibody. (Heat-induced epitope retrieval by 1mM EDTA in 10mM Tris, pH8.5, 120°C for 3min, [TA804198])



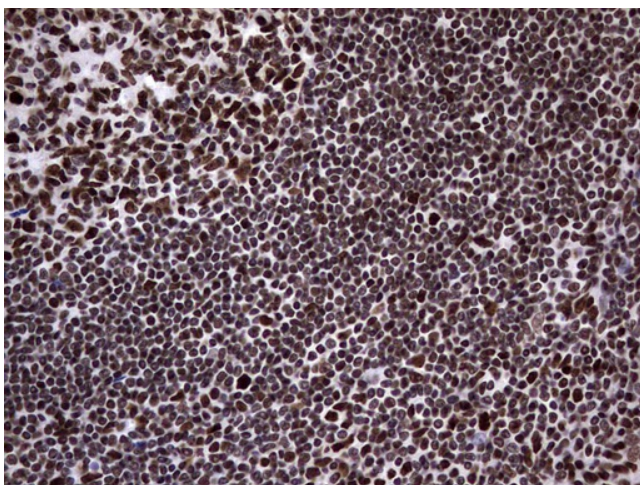
Immunohistochemical staining of paraffin-embedded Human pancreas tissue within the normal limits using anti-N4BP2L2 mouse monoclonal antibody. (Heat-induced epitope retrieval by 1mM EDTA in 10mM Tris, pH8.5, 120°C for 3min, [TA804198])



Immunohistochemical staining of paraffin-embedded Carcinoma of Human thyroid tissue using anti-N4BP2L2 mouse monoclonal antibody. (Heat-induced epitope retrieval by 1mM EDTA in 10mM Tris, pH8.5, 120°C for 3min, [TA804198])



Immunohistochemical staining of paraffin-embedded Carcinoma of Human prostate tissue using anti-N4BP2L2 mouse monoclonal antibody. (Heat-induced epitope retrieval by 1mM EDTA in 10mM Tris, pH8.5, 120°C for 3min, [TA804198])



Immunohistochemical staining of paraffin-embedded Human tonsil within the normal limits using anti-N4BP2L2 mouse monoclonal antibody. (Heat-induced epitope retrieval by 1mM EDTA in 10mM Tris, pH8.5, 120°C for 3min, [TA804198])