

Product datasheet for **TA804197M**

N4BP2L2 Mouse Monoclonal Antibody [Clone ID: OTI6A9]

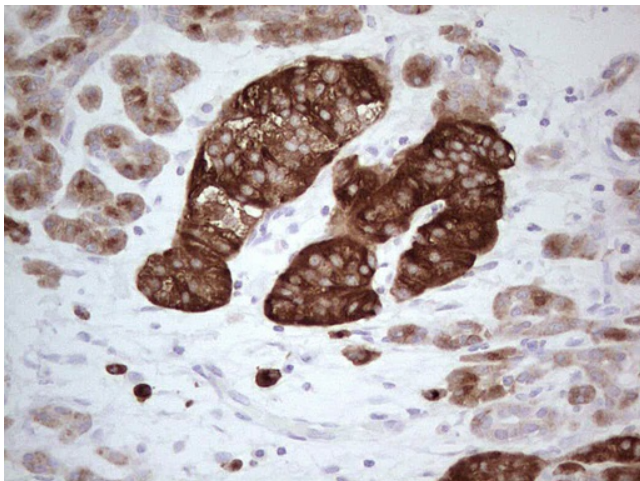
Product data:

Product Type:	Primary Antibodies
Clone Name:	OTI6A9
Applications:	IHC
Recommended Dilution:	IHC 1:150
Reactivity:	Human
Host:	Mouse
Isotype:	IgG1
Clonality:	Monoclonal
Immunogen:	Full length human recombinant protein of human N4BP2L2 (NP_055702) produced in E.coli.
Formulation:	PBS (pH 7.3) containing 1% BSA, 50% glycerol and 0.02% sodium azide.
Concentration:	1 mg/ml
Purification:	Purified from mouse ascites fluids or tissue culture supernatant by affinity chromatography (protein A/G)
Conjugation:	Unconjugated
Storage:	Store at -20°C as received.
Stability:	Stable for 12 months from date of receipt.
Predicted Protein Size:	67.3 kDa
Gene Name:	NEDD4 binding protein 2-like 2
Database Link:	NP_055702 Entrez Gene 10443 Human Q92802
Synonyms:	92M18.3; CG005; CG016; PFAAP5

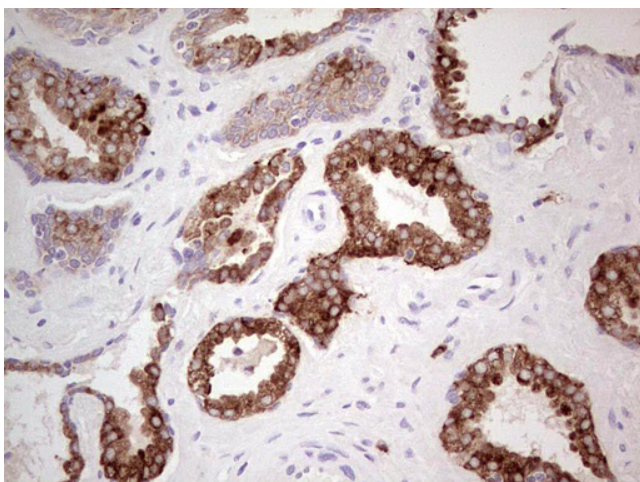


[View online »](#)

Product images:



Immunohistochemical staining of paraffin-embedded Carcinoma of Human pancreas tissue using anti-N4BP2L2 mouse monoclonal antibody. Heat-induced epitope retrieval by EDTA solution buffer pH 8.0 at 120°C for 3 min.



Immunohistochemical staining of paraffin-embedded Carcinoma of Human prostate tissue using anti-N4BP2L2 mouse monoclonal antibody. Heat-induced epitope retrieval by EDTA solution buffer pH 8.0 at 120°C for 3 min.