

## Product datasheet for **TA804173S**

### **C10orf63 (ENKUR) Mouse Monoclonal Antibody [Clone ID: OTI6C10]**

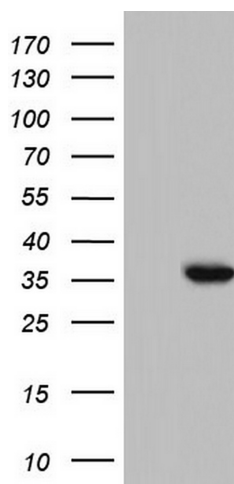
#### **Product data:**

Product Type:	Primary Antibodies
Clone Name:	OTI6C10
Applications:	IHC, WB
Recommended Dilution:	WB 1:2000, IHC 1:150
Reactivity:	Human, Mouse, Rat
Host:	Mouse
Isotype:	IgG1
Clonality:	Monoclonal
Immunogen:	Full length human recombinant protein of human ENKUR (NP_659447) produced in E.coli.
Formulation:	PBS (pH 7.3) containing 1% BSA, 50% glycerol and 0.02% sodium azide.
Concentration:	1 mg/ml
Purification:	Purified from mouse ascites fluids or tissue culture supernatant by affinity chromatography (protein A/G)
Conjugation:	Unconjugated
Storage:	Store at -20°C as received.
Stability:	Stable for 12 months from date of receipt.
Predicted Protein Size:	29.3 kDa
Gene Name:	enkurin, TRPC channel interacting protein
Database Link:	<a href="#">NP_659447</a> <a href="#">Entrez Gene 219670 Human</a> <a href="#">Q8TC29</a>
Background:	This gene encodes a protein that interacts with calmodulin and several transient receptor potential canonical cation channel proteins. The encoded protein may function as an adaptor to localize signal transduction machinery to calcium channels. Alternative splicing results in multiple transcript variants. [provided by RefSeq, Jun 2012]
Synonyms:	C10orf63; CFAP106

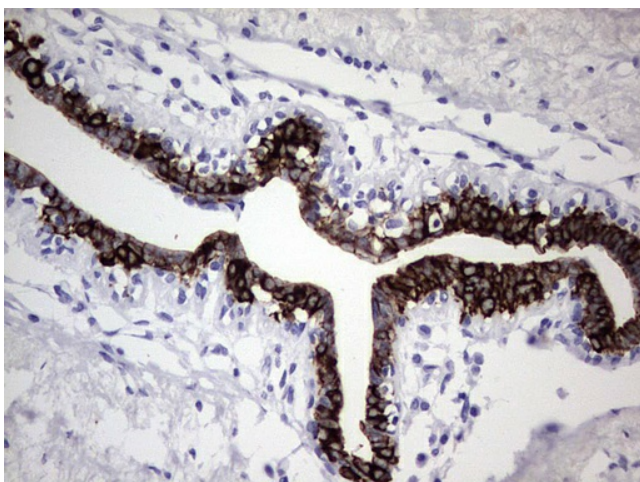


[View online »](#)

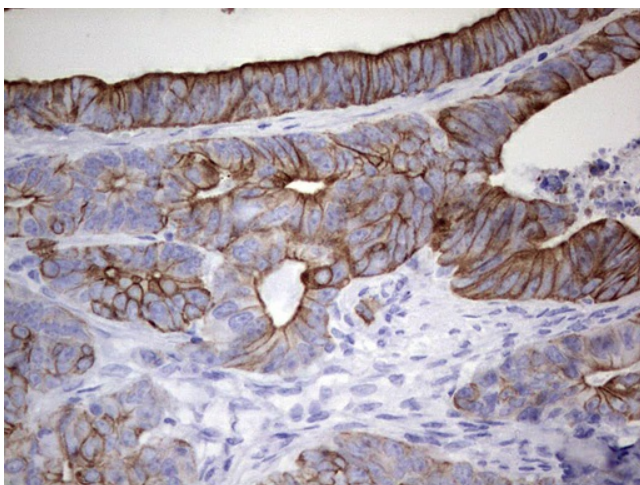
## Product images:



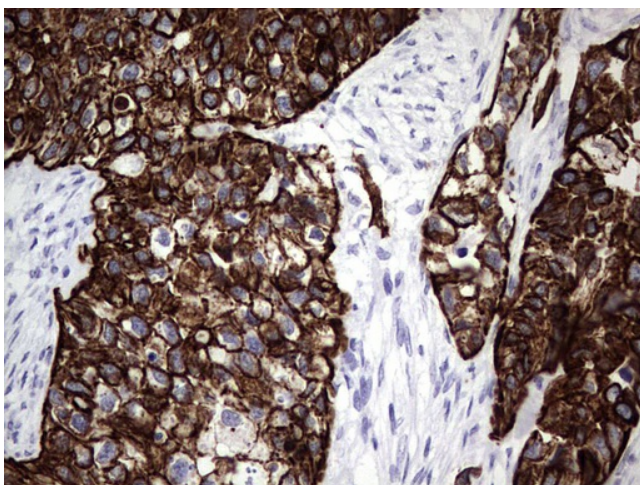
HEK293T cells were transfected with the pCMV6-ENTRY control (Cat# [PS100001], Left lane) or pCMV6-ENTRY ENKUR (Cat# [RC205483], Right lane) cDNA for 48 hrs and lysed. Equivalent amounts of cell lysates (5 ug per lane) were separated by SDS-PAGE and immunoblotted with anti-ENKUR antibody (Cat# [TA804173]). Positive lysates [LY408146] (100ug) and [LC408146] (20ug) can be purchased separately from OriGene.



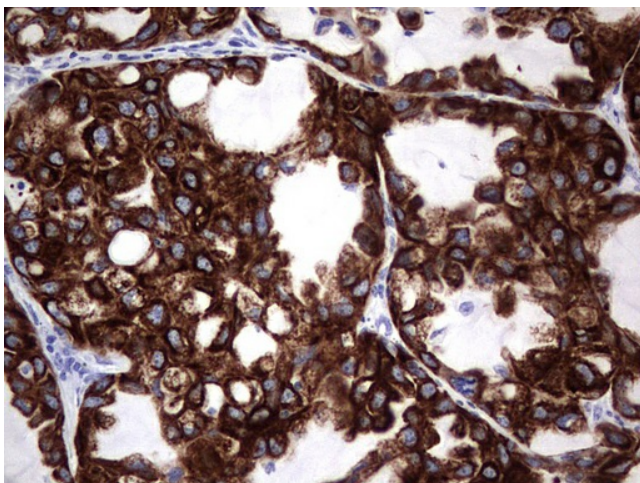
Immunohistochemical staining of paraffin-embedded Adenocarcinoma of Human breast tissue using anti-ENKUR mouse monoclonal antibody. (Heat-induced epitope retrieval by 1mM EDTA in 10mM Tris, pH8.5, 120°C for 3min, [TA804173])



Immunohistochemical staining of paraffin-embedded Adenocarcinoma of Human colon tissue using anti-ENKUR mouse monoclonal antibody. (Heat-induced epitope retrieval by 1mM EDTA in 10mM Tris, pH8.5, 120°C for 3min, [TA804173])

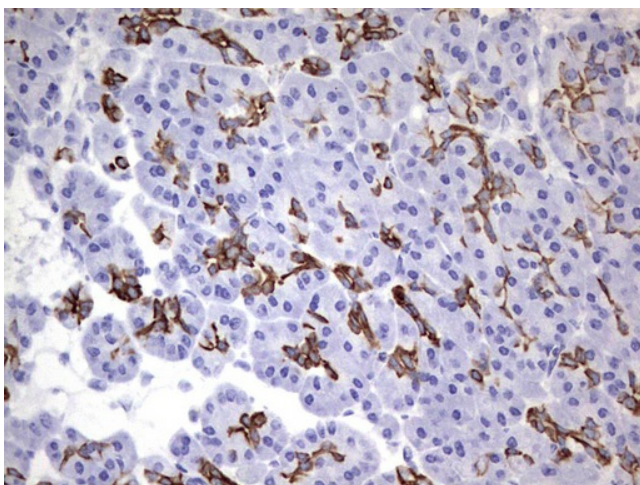


Immunohistochemical staining of paraffin-embedded Carcinoma of Human kidney tissue using anti-ENKUR mouse monoclonal antibody. (Heat-induced epitope retrieval by 1mM EDTA in 10mM Tris, pH8.5, 120°C for 3min, [TA804173])

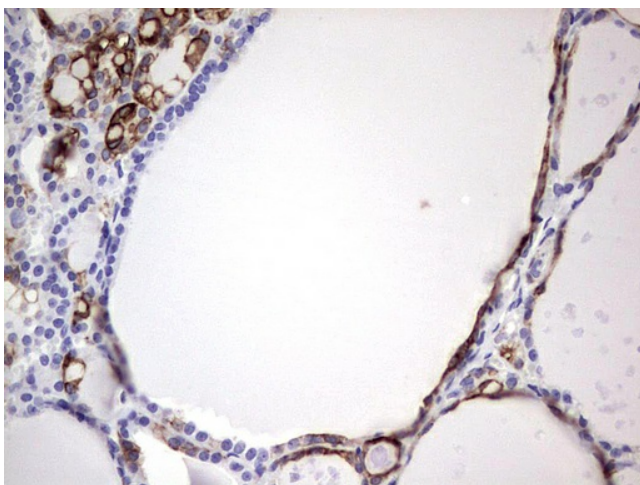


Immunohistochemical staining of paraffin-embedded Carcinoma of Human lung tissue using anti-ENKUR mouse monoclonal antibody. (Heat-induced epitope retrieval by 1mM EDTA in 10mM Tris, pH8.5, 120°C for 3min, [TA804173])

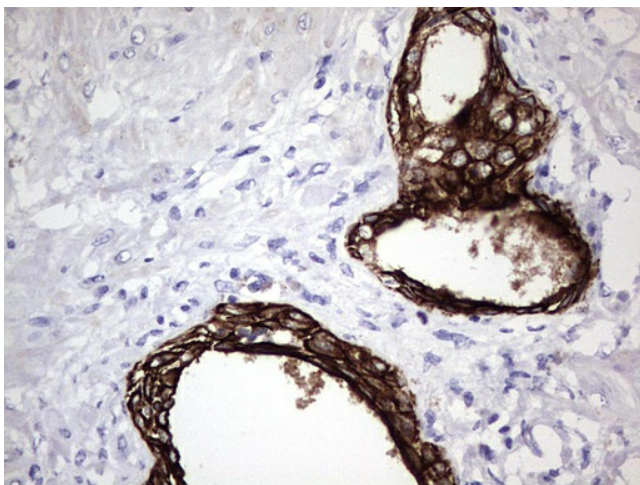




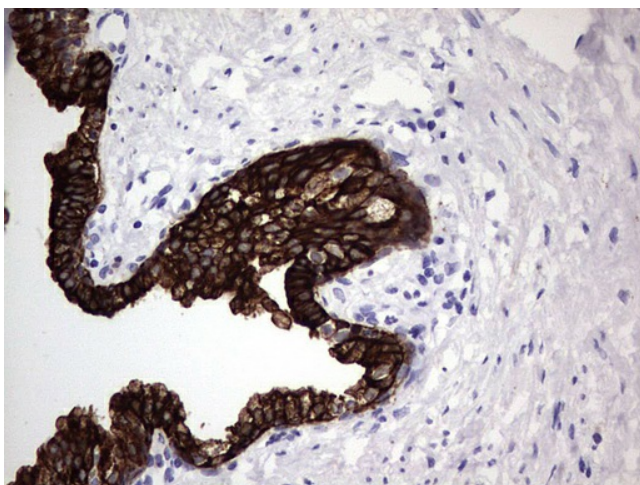
Immunohistochemical staining of paraffin-embedded Human pancreas tissue within the normal limits using anti-ENKUR mouse monoclonal antibody. (Heat-induced epitope retrieval by 1mM EDTA in 10mM Tris, pH8.5, 120°C for 3min, [TA804173])



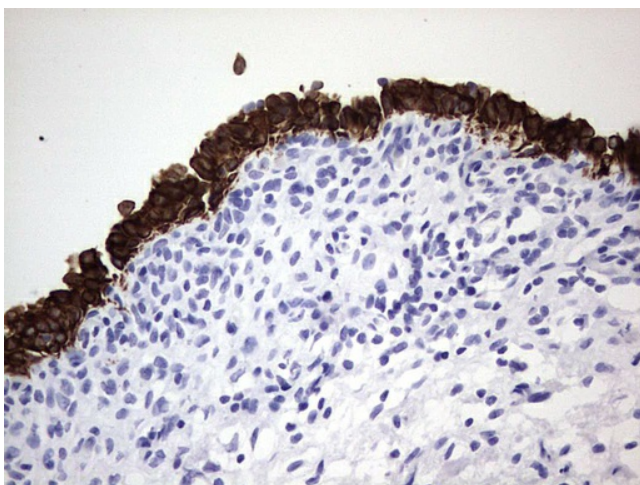
Immunohistochemical staining of paraffin-embedded Human thyroid tissue within the normal limits using anti-ENKUR mouse monoclonal antibody. (Heat-induced epitope retrieval by 1mM EDTA in 10mM Tris, pH8.5, 120°C for 3min, [TA804173])



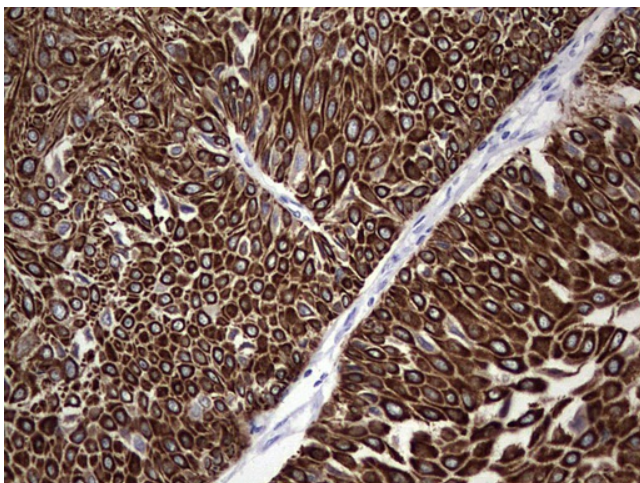
Immunohistochemical staining of paraffin-embedded Human prostate tissue within the normal limits using anti-ENKUR mouse monoclonal antibody. (Heat-induced epitope retrieval by 1mM EDTA in 10mM Tris, pH8.5, 120°C for 3min, [TA804173])



Immunohistochemical staining of paraffin-embedded Carcinoma of Human prostate tissue using anti-ENKUR mouse monoclonal antibody. (Heat-induced epitope retrieval by 1mM EDTA in 10mM Tris, pH8.5, 120°C for 3min, [TA804173])

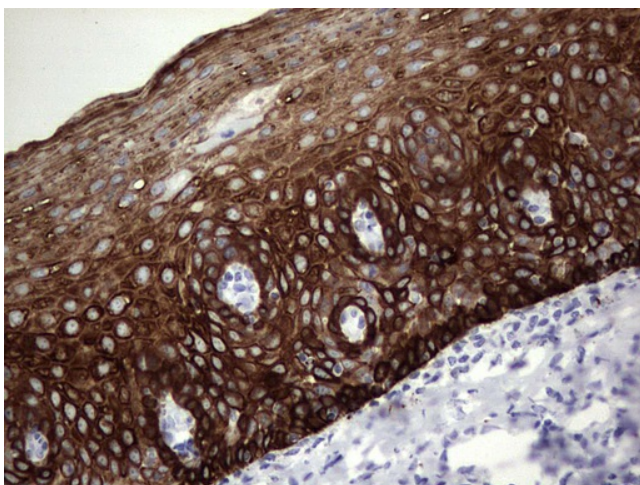


Immunohistochemical staining of paraffin-embedded Human bladder tissue within the normal limits using anti-ENKUR mouse monoclonal antibody. (Heat-induced epitope retrieval by 1mM EDTA in 10mM Tris, pH8.5, 120°C for 3min, [TA804173])



Immunohistochemical staining of paraffin-embedded Carcinoma of Human bladder tissue using anti-ENKUR mouse monoclonal antibody. (Heat-induced epitope retrieval by 1mM EDTA in 10mM Tris, pH8.5, 120°C for 3min, [TA804173])





Immunohistochemical staining of paraffin-embedded Human tonsil within the normal limits using anti-ENKUR mouse monoclonal antibody. (Heat-induced epitope retrieval by 1mM EDTA in 10mM Tris, pH8.5, 120°C for 3min, [TA804173])