

Product datasheet for **TA804160M**

FAF1 Mouse Monoclonal Antibody [Clone ID: OTI2F9]

Product data:

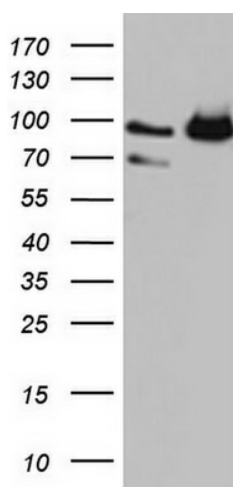
Product Type:	Primary Antibodies
Clone Name:	OTI2F9
Applications:	IHC, WB
Recommended Dilution:	WB 1:2000, IHC 1:150
Reactivity:	Human, Mouse, Rat
Host:	Mouse
Isotype:	IgG1
Clonality:	Monoclonal
Immunogen:	Human recombinant protein fragment corresponding to amino acids 415-650 of human FAF1 (NP_008982) produced in E.coli.
Formulation:	PBS (pH 7.3) containing 1% BSA, 50% glycerol and 0.02% sodium azide.
Concentration:	1 mg/ml
Purification:	Purified from mouse ascites fluids or tissue culture supernatant by affinity chromatography (protein A/G)
Conjugation:	Unconjugated
Storage:	Store at -20°C as received.
Stability:	Stable for 12 months from date of receipt.
Predicted Protein Size:	73.8 kDa
Gene Name:	Fas associated factor 1
Database Link:	NP_008982 Entrez Gene 14084 Mouse Entrez Gene 140657 Rat Entrez Gene 11124 Human Q9UNN5
Background:	Interaction of Fas ligand (TNFSF6) with the FAS antigen (TNFRSF6) mediates programmed cell death, also called apoptosis, in a number of organ systems. The protein encoded by this gene binds to FAS antigen and can initiate apoptosis or enhance apoptosis initiated through FAS antigen. Initiation of apoptosis by the protein encoded by this gene requires a ubiquitin-like domain but not the FAS-binding domain. [provided by RefSeq, Jul 2008]


[View online »](#)

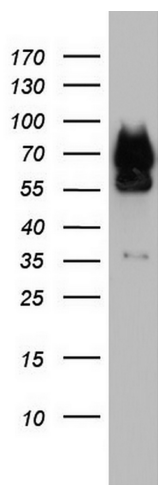
Synonyms: CGI-03; hFAF1; HFAF1s; UBXD12; UBXN3A

Protein Families: Druggable Genome

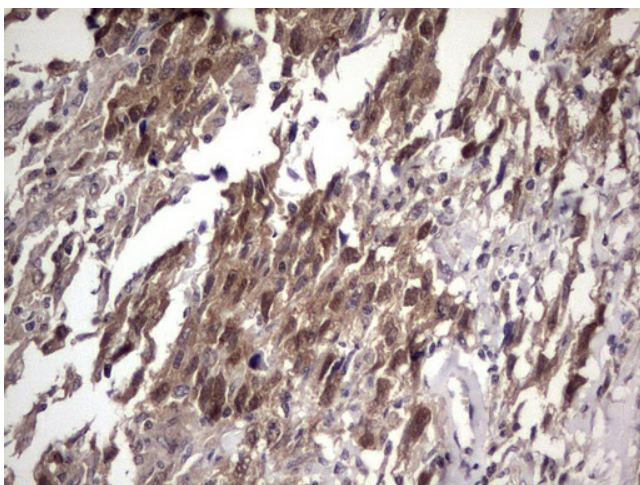
Product images:



HEK293T cells were transfected with the pCMV6-ENTRY control (Left lane) or pCMV6-ENTRY FAF1 ([RC201072], Right lane) cDNA for 48 hrs and lysed. Equivalent amounts of cell lysates (5 ug per lane) were separated by SDS-PAGE and immunoblotted with anti-FAF1. Positive lysates [LY416234] (100ug) and [LC416234] (20ug) can be purchased separately from OriGene.



Western blot analysis of HT29 cell lysate (35ug) by using anti-FAF1 monoclonal antibody. Dilution: 1:500



Immunohistochemical staining of paraffin-embedded Adenocarcinoma of Human ovary tissue using anti-FAF1 mouse monoclonal antibody. Heat-induced epitope retrieval by EDTA solution buffer pH 8.0 at 120°C for 3 min.