

## Product datasheet for **TA804158AM**

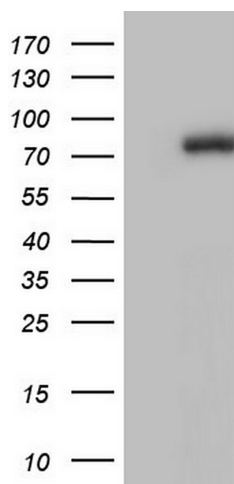
### FAF1 Mouse Monoclonal Antibody (Biotin conjugated) [Clone ID: OTI10H5]

#### Product data:

Product Type:	Primary Antibodies
Clone Name:	OTI10H5
Applications:	WB
Recommended Dilution:	WB 1:500
Reactivity:	Human, Mouse, Rat
Host:	Mouse
Isotype:	IgG1
Clonality:	Monoclonal
Immunogen:	Human recombinant protein fragment corresponding to amino acids 415-650 of human FAF1 (NP_008982) produced in E.coli.
Formulation:	PBS (pH 7.3) containing 1% BSA, 50% glycerol and 0.02% sodium azide.
Concentration:	0.5 mg/ml
Purification:	Purified from mouse ascites fluids or tissue culture supernatant by affinity chromatography (protein A/G)
Conjugation:	Biotin
Storage:	Store at -20°C as received.
Stability:	Stable for 12 months from date of receipt.
Predicted Protein Size:	73.8 kDa
Gene Name:	Fas associated factor 1
Database Link:	<a href="#">NP_008982</a> <a href="#">Entrez Gene 14084 Mouse</a> <a href="#">Entrez Gene 140657 Rat</a> <a href="#">Entrez Gene 11124 Human</a> <a href="#">Q9UNN5</a>
Synonyms:	CGI-03; hFAF1; HFAF1s; UBXD12; UBXN3A
Protein Families:	Druggable Genome



[View online »](#)

**Product images:**

HEK293T cells were transfected with the pCMV6-ENTRY control (Left lane) or pCMV6-ENTRY FAF1 ([RC201072], Right lane) cDNA for 48 hrs and lysed. Equivalent amounts of cell lysates (5 ug per lane) were separated by SDS-PAGE and immunoblotted with anti-FAF1. Positive lysates [LY416234] (100ug) and [LC416234] (20ug) can be purchased separately from OriGene.