

## Product datasheet for **TA804152**

### ACE2 Mouse Monoclonal Antibody [Clone ID: OTI1G4] (Angiotensin Converting Enzyme 2)

#### Product data:

Product Type:	Primary Antibodies
Clone Name:	OTI1G4
Applications:	IHC, WB
Recommended Dilution:	WB 1:2000, IHC 1:150
Reactivity:	Human
Host:	Mouse
Isotype:	IgG1
Clonality:	Monoclonal
Immunogen:	Human recombinant protein fragment corresponding to amino acids 18-237 of human ACE2 (NP_068576) produced in E.coli.
Formulation:	PBS (PH 7.3) containing 1% BSA, 50% glycerol and 0.02% sodium azide.
Concentration:	1 mg/ml
Purification:	Purified from mouse ascites fluids or tissue culture supernatant by affinity chromatography (protein A/G)
Conjugation:	Unconjugated
Storage:	Store at -20°C as received.
Stability:	Stable for 12 months from date of receipt.
Gene Name:	angiotensin I converting enzyme 2
Database Link:	<a href="#">NP_068576</a> <a href="#">Entrez Gene 59272 Human</a> <a href="#">Q9BYF1</a>



[View online »](#)

**Background:**

The protein encoded by this gene belongs to the angiotensin-converting enzyme family of dipeptidyl carboxydipeptidases and has considerable homology to human angiotensin 1 converting enzyme. This secreted protein catalyzes the cleavage of angiotensin I into angiotensin 1-9, and angiotensin II into the vasodilator angiotensin 1-7. The organ- and cell-specific expression of this gene suggests that it may play a role in the regulation of cardiovascular and renal function, as well as fertility. In addition, the encoded protein is a functional receptor for the spike glycoprotein of the human coronaviruses SARS and HCoV-NL63. [provided by RefSeq, Jul 2008]

**Synonyms:**

ACEH

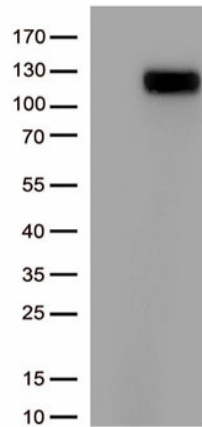
**Protein Families:**

Druggable Genome, Secreted Protein, Transmembrane

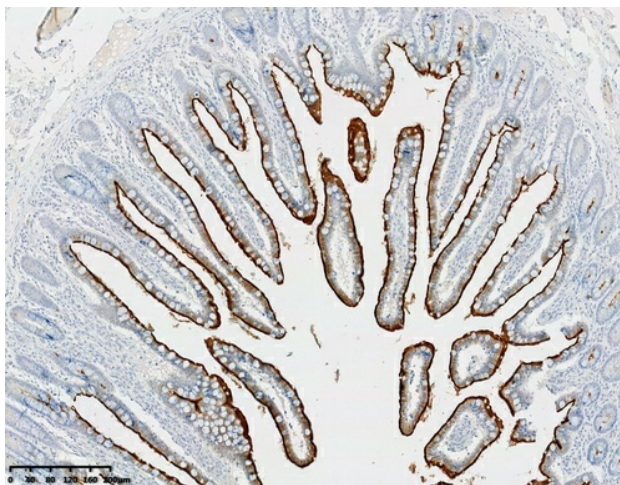
**Protein Pathways:**

Renin-angiotensin system

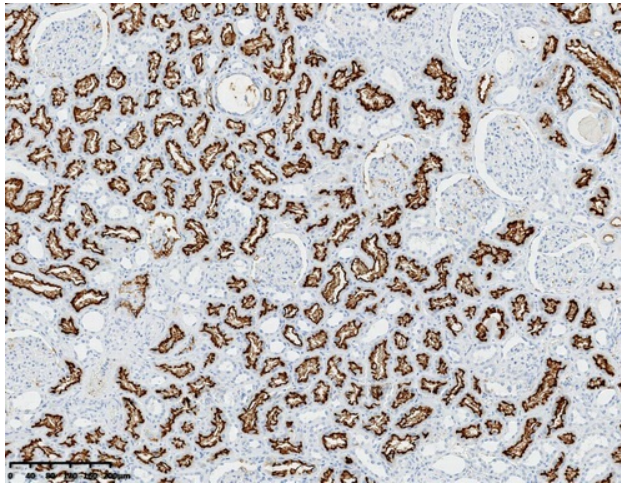
**Product images:**



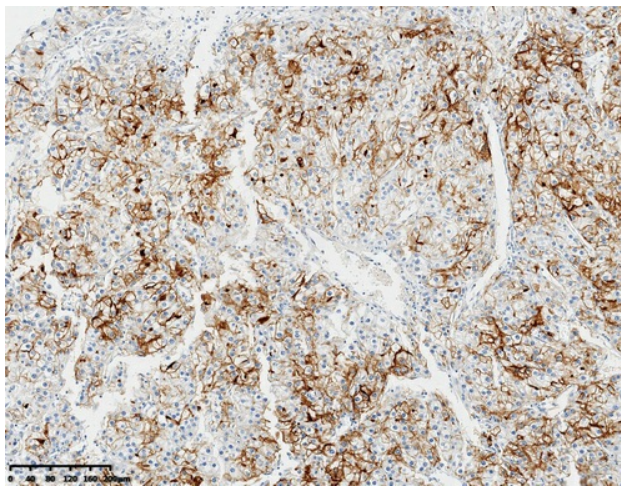
HEK293T cells were transfected with the pCMV6-ENTRY control (Left lane) or pCMV6-ENTRY ACE2 ([RC208442], Right lane) cDNA for 48 hrs and lysed. Equivalent amounts of cell lysates (5 ug per lane) were separated by SDS-PAGE and immunoblotted with anti-ACE2 (TA804152). (1:500)



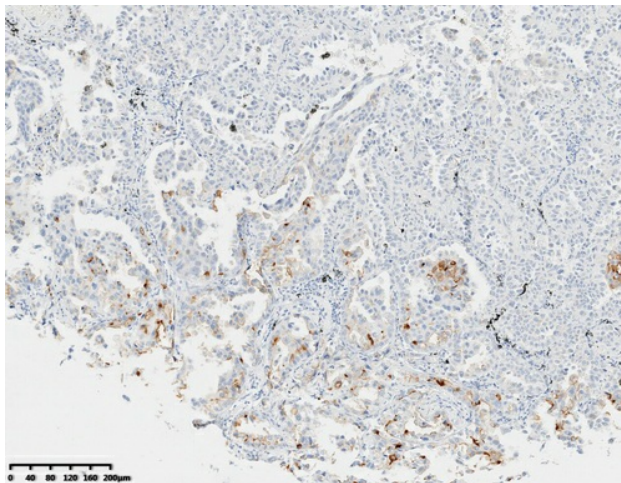
Immunohistochemical staining of paraffin-embedded Human colon tissue within the normal limits using anti-ACE2 mouse monoclonal antibody (TA804152). Heat-induced epitope retrieval by 1mM EDTA in 10mM Tris buffer (pH8.0) at 120 oC for 3 min. (1:800)



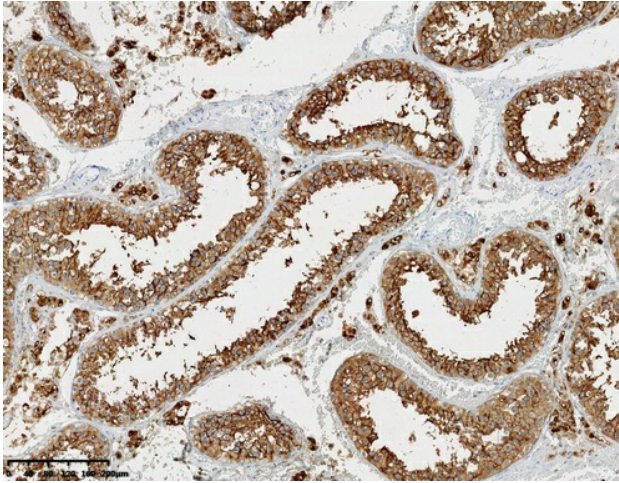
Immunohistochemical staining of paraffin-embedded Human Kidney tissue using anti-ACE2 mouse monoclonal antibody (TA804152). Heat-induced epitope retrieval by 1mM EDTA in 10mM Tris buffer (pH8.0) at 120°C for 3 min. (1:800)



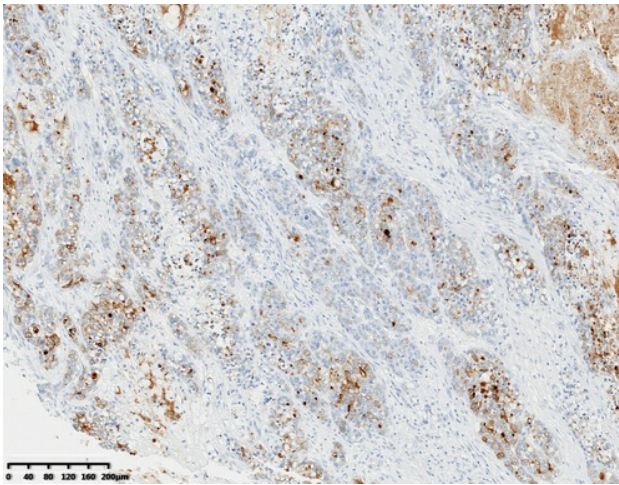
Immunohistochemical staining of paraffin-embedded Human renal cell carcinoma tissue using anti-ACE2 mouse monoclonal antibody (TA804152). Heat-induced epitope retrieval by 1mM EDTA in 10mM Tris buffer (pH8.0) at 120 oC for 3 min. (1:800)



Immunohistochemical staining of paraffin-embedded carcinoma of Human lung tissue using anti-ACE2 mouse monoclonal antibody (TA804152). Heat-induced epitope retrieval by 1mM EDTA in 10mM Tris buffer (pH8.0) at 120 oC for 3 min. (1:800)



Immunohistochemical staining of paraffin-embedded Human testicular tissue within the normal limits using anti-ACE2 mouse monoclonal antibody (TA804152). Heat-induced epitope retrieval by 1mM EDTA in 10mM Tris buffer (pH8.0) at 120 oC for 3 min. (1:800)



Immunohistochemical staining of paraffin-embedded Human Gastric Carcinoma using anti-ACE2 mouse monoclonal antibody (TA804152). Heat-induced epitope retrieval by 1mM EDTA in 10mM Tris buffer (pH8.0) at 120 oC for 3 min. (1:800)