

## Product datasheet for **TA804132**

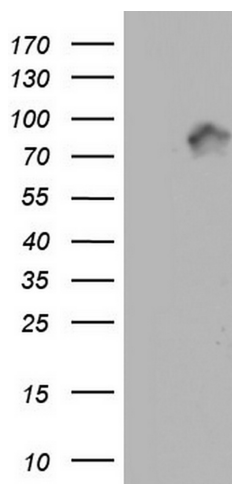
### LYRIC (MTDH) Mouse Monoclonal Antibody [Clone ID: OTI2A6]

#### Product data:

Product Type:	Primary Antibodies
Clone Name:	OTI2A6
Applications:	WB
Recommended Dilution:	WB 1:2000
Reactivity:	Human, Mouse, Rat
Host:	Mouse
Isotype:	IgG2a
Clonality:	Monoclonal
Immunogen:	Human recombinant protein fragment corresponding to amino acids 70-582 of human MTDH (NP_848927) produced in SF9 cell.
Formulation:	PBS (pH 7.3) containing 1% BSA, 50% glycerol and 0.02% sodium azide.
Concentration:	1 mg/ml
Purification:	Purified from mouse ascites fluids or tissue culture supernatant by affinity chromatography (protein A/G)
Conjugation:	Unconjugated
Storage:	Store at -20°C as received.
Stability:	Stable for 12 months from date of receipt.
Predicted Protein Size:	63.7 kDa
Gene Name:	metadherin
Database Link:	<a href="#">NP_848927</a> <a href="#">Entrez Gene 67154 Mouse</a> <a href="#">Entrez Gene 170910 Rat</a> <a href="#">Entrez Gene 92140 Human</a> <a href="#">Q86UE4</a>
Synonyms:	3D3; AEG-1; AEG1; LYRIC; LYRIC/3D3
Protein Families:	Transmembrane



[View online »](#)

**Product images:**

HEK293T cells were transfected with the pCMV6-ENTRY control (Left lane) or pCMV6-ENTRY MTDH ([RC207238], Right lane) cDNA for 48 hrs and lysed. Equivalent amounts of cell lysates (5 ug per lane) were separated by SDS-PAGE and immunoblotted with anti-MTDH. Positive lysates [LY403614] (100ug) and [LC403614] (20ug) can be purchased separately from OriGene.