

Product datasheet for **TA804124AM**

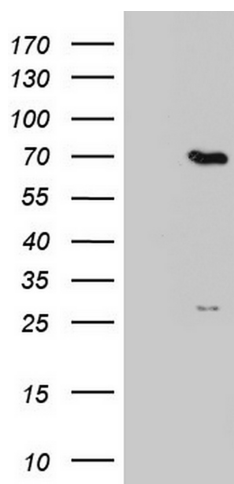
PPP2R5D Mouse Monoclonal Antibody (Biotin conjugated) [Clone ID: OTI2F2]

Product data:

Product Type:	Primary Antibodies
Clone Name:	OTI2F2
Applications:	WB
Recommended Dilution:	WB 1:2000
Reactivity:	Human, Mouse, Rat
Host:	Mouse
Isotype:	IgG1
Clonality:	Monoclonal
Immunogen:	Full length human recombinant protein of human PPP2R5D (NP_006236) produced in E.coli.
Formulation:	PBS (pH 7.3) containing 1% BSA, 50% glycerol and 0.02% sodium azide.
Concentration:	0.5 mg/ml
Purification:	Purified from mouse ascites fluids or tissue culture supernatant by affinity chromatography (protein A/G)
Conjugation:	Biotin
Storage:	Store at -20°C as received.
Stability:	Stable for 12 months from date of receipt.
Predicted Protein Size:	69.8 kDa
Gene Name:	protein phosphatase 2 regulatory subunit B'delta
Database Link:	NP_006236 Entrez Gene 21770 Mouse Entrez Gene 363193 Rat Entrez Gene 5528 Human Q14738
Synonyms:	B56D; MRD35
Protein Families:	Phosphatase
Protein Pathways:	Oocyte meiosis, Wnt signaling pathway



[View online »](#)

Product images:

HEK293T cells were transfected with the pCMV6-ENTRY control (Left lane) or pCMV6-ENTRY PPP2R5D ([RC201945], Right lane) cDNA for 48 hrs and lysed. Equivalent amounts of cell lysates (5 ug per lane) were separated by SDS-PAGE and immunoblotted with anti-PPP2R5D. Positive lysates [LY416775] (100ug) and [LC416775] (20ug) can be purchased separately from OriGene.