

Product datasheet for **TA804120AM**

L Kynurenine Hydrolase (KYNU) Mouse Monoclonal Antibody (Biotin conjugated) [Clone ID: OTI1F1]

Product data:

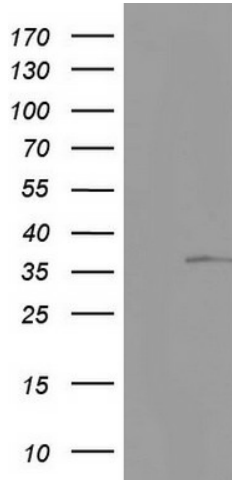
| | |
|-----------------------|---|
| Product Type: | Primary Antibodies |
| Clone Name: | OTI1F1 |
| Applications: | IHC, WB |
| Recommended Dilution: | WB 1:2000 |
| Reactivity: | Human, Rat |
| Host: | Mouse |
| Isotype: | IgG2b |
| Clonality: | Monoclonal |
| Immunogen: | Human recombinant protein fragment corresponding to amino acids 1-216 of human KYNU (NP_001028170) produced in E.coli. |
| Formulation: | PBS (pH 7.3) containing 1% BSA, 50% glycerol and 0.02% sodium azide. |
| Concentration: | 0.5 mg/ml |
| Purification: | Purified from mouse ascites fluids or tissue culture supernatant by affinity chromatography (protein A/G) |
| Conjugation: | Biotin |
| Storage: | Store at -20°C as received. |
| Stability: | Stable for 12 months from date of receipt. |
| Gene Name: | kynureninase |
| Database Link: | NP_001028170 Entrez Gene 116682 Rat Entrez Gene 8942 Human Q16719 |
| Background: | Kynureninase is a pyridoxal-5'-phosphate (pyridoxal-P) dependent enzyme that catalyzes the cleavage of L-kynurenine and L-3-hydroxykynurenine into anthranilic and 3-hydroxyanthranilic acids, respectively. Kynureninase is involved in the biosynthesis of NAD cofactors from tryptophan through the kynurenine pathway. Alternative splicing results in multiple transcript variants. [provided by RefSeq, Nov 2010] |
| Synonyms: | KYNUU |



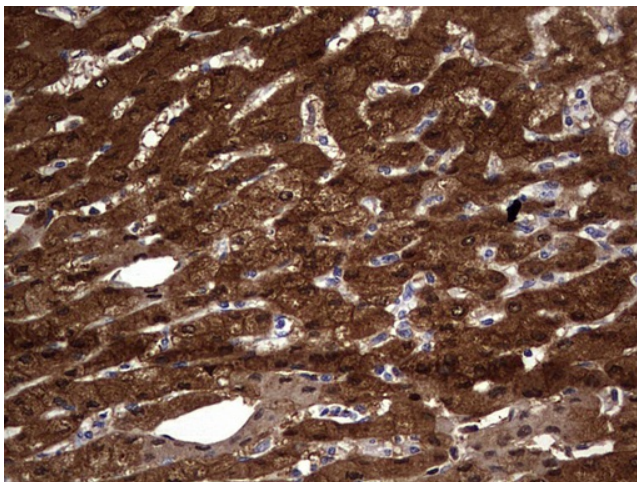
[View online »](#)

Protein Families: Protease
Protein Pathways: Metabolic pathways, Tryptophan metabolism

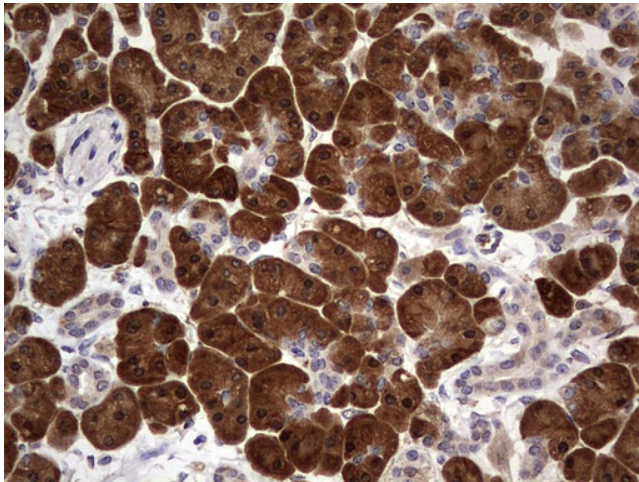
Product images:



HEK293T cells were transfected with the pCMV6-ENTRY control (Left lane) or pCMV6-ENTRY KYNU ([RC201559], Right lane) cDNA for 48 hrs and lysed. Equivalent amounts of cell lysates (5 ug per lane) were separated by SDS-PAGE and immunoblotted with anti-KYNU. Positive lysates [LY422334] (100ug) and [LC422334] (20ug) can be purchased separately from OriGene.



Immunohistochemical staining of paraffin-embedded Human liver tissue within the normal limits using anti-KYNU mouse monoclonal antibody. ([TA804120]) Dilution: 1:150



Immunohistochemical staining of paraffin-embedded Human pancreas tissue within the normal limits using anti-KYNU mouse monoclonal antibody. ([TA804120]) Dilution: 1:150