

## Product datasheet for **TA804108AM**

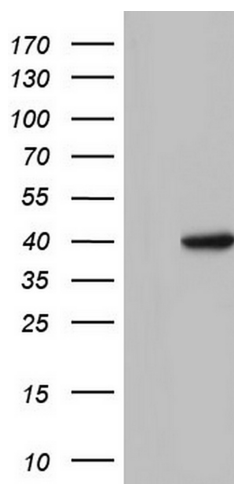
### **TFB1M Mouse Monoclonal Antibody (Biotin conjugated) [Clone ID: OTI13H2]**

#### **Product data:**

Product Type:	Primary Antibodies
Clone Name:	OTI13H2
Applications:	WB
Recommended Dilution:	WB 1:2000
Reactivity:	Human, Mouse, Rat
Host:	Mouse
Isotype:	IgG1
Clonality:	Monoclonal
Immunogen:	Human recombinant protein fragment corresponding to amino acids 116-346 of human TFB1M (NP_057104) produced in E.coli.
Formulation:	PBS (pH 7.3) containing 1% BSA, 50% glycerol and 0.02% sodium azide.
Concentration:	0.5 mg/ml
Purification:	Purified from mouse ascites fluids or tissue culture supernatant by affinity chromatography (protein A/G)
Conjugation:	Biotin
Storage:	Store at -20°C as received.
Stability:	Stable for 12 months from date of receipt.
Predicted Protein Size:	39.4 kDa
Gene Name:	transcription factor B1, mitochondrial
Database Link:	<a href="#">NP_057104</a> <a href="#">Entrez Gene 308140 Rat</a> <a href="#">Entrez Gene 51106 Human</a> <a href="#">Q8WVM0</a>
Synonyms:	CGI-75; CGI75; mtTFB; mtTFB1
Protein Families:	Transcription Factors



[View online »](#)

**Product images:**

HEK293T cells were transfected with the pCMV6-ENTRY control (Cat# [PS100001], Left lane) or pCMV6-ENTRY TFB1M (Cat# [RC204643], Right lane) cDNA for 48 hrs and lysed. Equivalent amounts of cell lysates (5 ug per lane) were separated by SDS-PAGE and immunoblotted with anti-TFB1M (Cat# [TA804108]). Positive lysates [LY402490] (100ug) and [LC402490] (20ug) can be purchased separately from OriGene.