

Product datasheet for **TA804059AM**

C14orf166 (RTRAF) Mouse Monoclonal Antibody (Biotin conjugated) [Clone ID: OTI2C3]

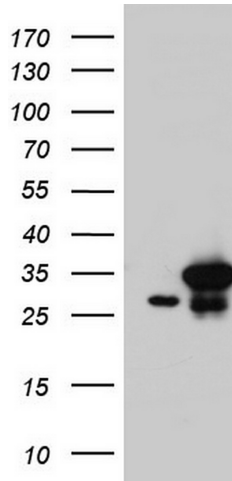
Product data:

Product Type:	Primary Antibodies
Clone Name:	OTI2C3
Applications:	IHC, WB
Recommended Dilution:	WB 1:2000, IHC 1:150
Reactivity:	Human
Host:	Mouse
Isotype:	IgG1
Clonality:	Monoclonal
Immunogen:	Full length human recombinant protein of human C14orf166 (NP_057123) produced in E.coli.
Formulation:	PBS (pH 7.3) containing 1% BSA, 50% glycerol and 0.02% sodium azide.
Concentration:	0.5 mg/ml
Purification:	Purified from mouse ascites fluids or tissue culture supernatant by affinity chromatography (protein A/G)
Conjugation:	Biotin
Storage:	Store at -20°C as received.
Stability:	Stable for 12 months from date of receipt.
Predicted Protein Size:	27.9 kDa
Gene Name:	chromosome 14 open reading frame 166
Database Link:	NP_057123 Entrez Gene 51637 Human Q9Y224
Synonyms:	CGI-99; CGI99; CLE; CLE7; hCLE1; LCRP369; RLLM1

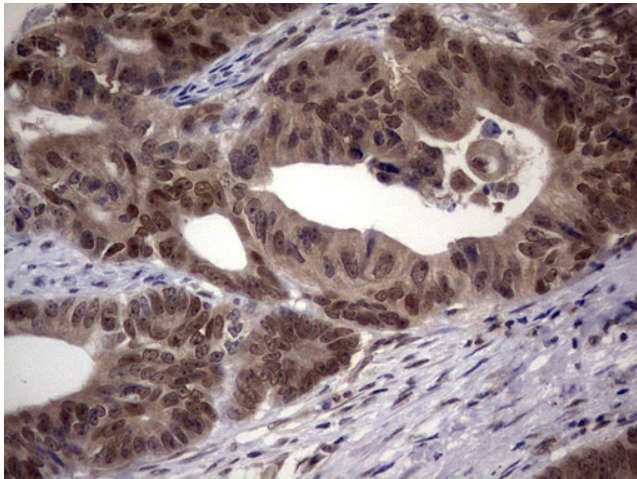


[View online »](#)

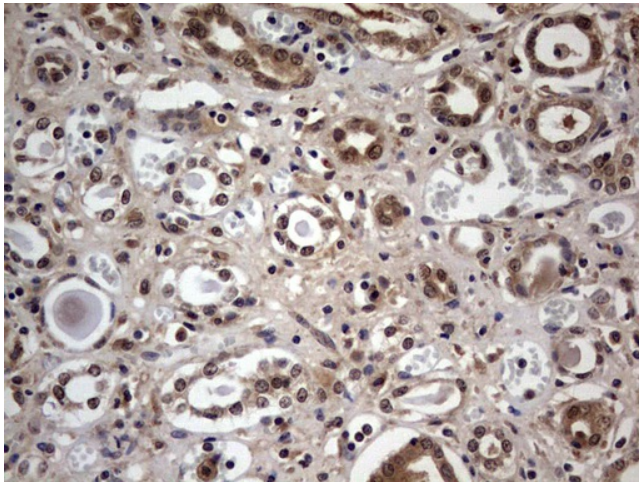
Product images:



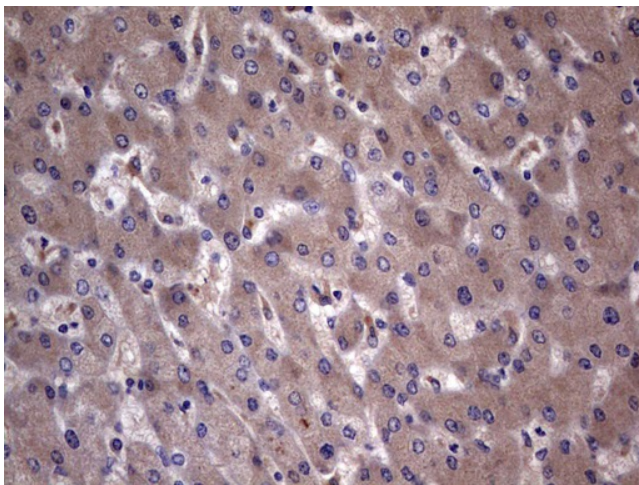
HEK293T cells were transfected with the pCMV6-ENTRY control (Left lane) or pCMV6-ENTRY C14orf166 ([RC200016], Right lane) cDNA for 48 hrs and lysed. Equivalent amounts of cell lysates (5 ug per lane) were separated by SDS-PAGE and immunoblotted with anti-C14orf166. Positive lysates [LY414235] (100ug) and [LC414235] (20ug) can be purchased separately from OriGene.



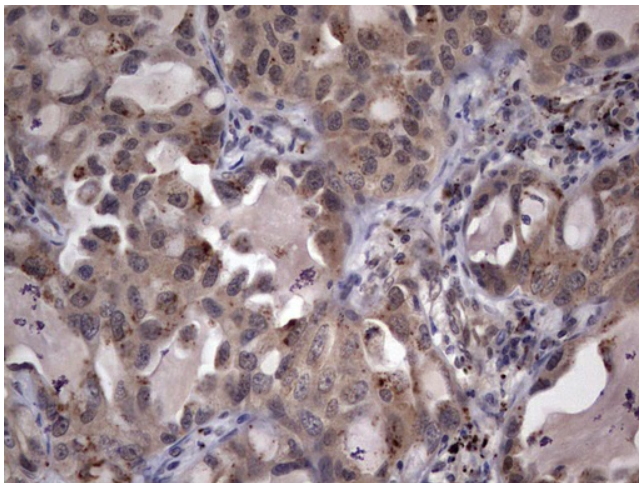
Immunohistochemical staining of paraffin-embedded Adenocarcinoma of Human colon tissue using anti-C14orf166 mouse monoclonal antibody. (Heat-induced epitope retrieval by 1mM EDTA in 10mM Tris, pH8.5, 120°C for 3min, [TA804059])



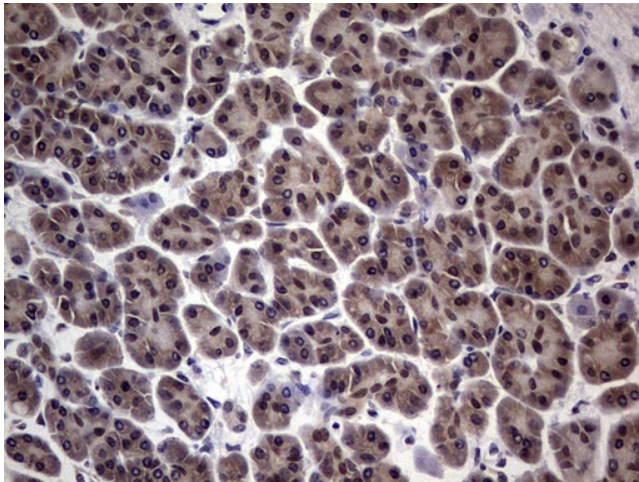
Immunohistochemical staining of paraffin-embedded Human Kidney tissue within the normal limits using anti-C14orf166 mouse monoclonal antibody. (Heat-induced epitope retrieval by 1mM EDTA in 10mM Tris, pH8.5, 120°C for 3min, [TA804059])



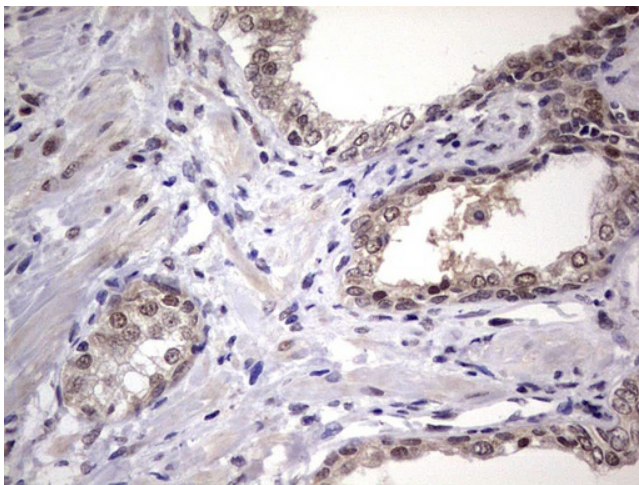
Immunohistochemical staining of paraffin-embedded Human liver tissue within the normal limits using anti-C14orf166 mouse monoclonal antibody. (Heat-induced epitope retrieval by 1mM EDTA in 10mM Tris, pH8.5, 120°C for 3min, [TA804059])



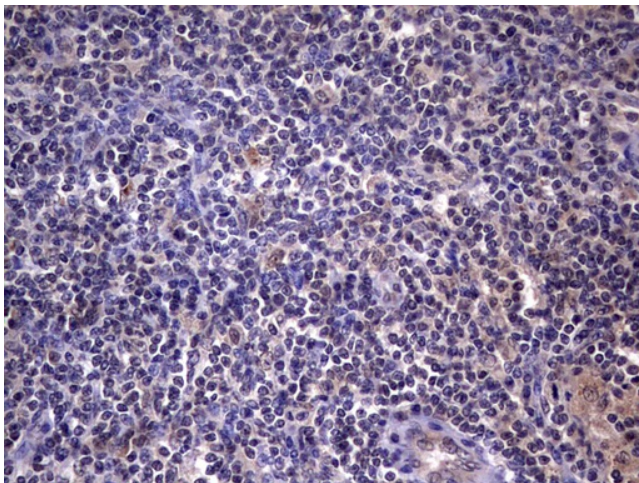
Immunohistochemical staining of paraffin-embedded Carcinoma of Human lung tissue using anti-C14orf166 mouse monoclonal antibody. (Heat-induced epitope retrieval by 1mM EDTA in 10mM Tris, pH8.5, 120°C for 3min, [TA804059])



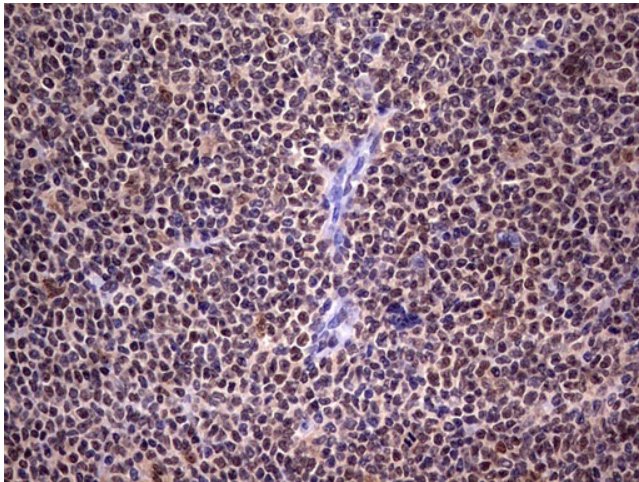
Immunohistochemical staining of paraffin-embedded Human pancreas tissue within the normal limits using anti-C14orf166 mouse monoclonal antibody. (Heat-induced epitope retrieval by 1mM EDTA in 10mM Tris, pH8.5, 120°C for 3min, [TA804059])



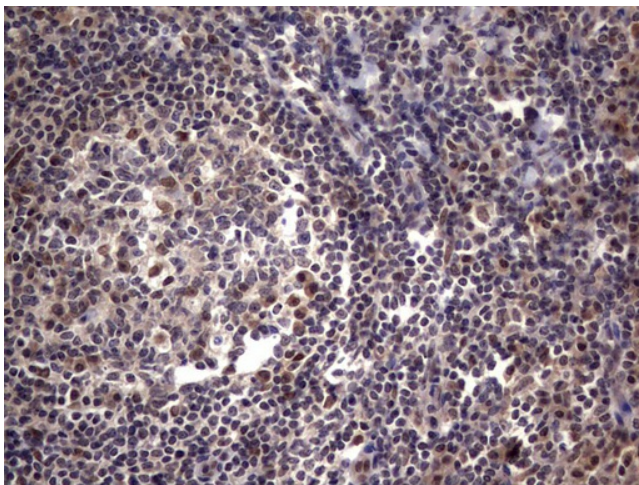
Immunohistochemical staining of paraffin-embedded Human prostate tissue within the normal limits using anti-C14orf166 mouse monoclonal antibody. (Heat-induced epitope retrieval by 1mM EDTA in 10mM Tris, pH8.5, 120°C for 3min, [TA804059])



Immunohistochemical staining of paraffin-embedded Human lymph node tissue within the normal limits using anti-C14orf166 mouse monoclonal antibody. (Heat-induced epitope retrieval by 1mM EDTA in 10mM Tris, pH8.5, 120°C for 3min, [TA804059])



Immunohistochemical staining of paraffin-embedded Human lymphoma tissue using anti-C14orf166 mouse monoclonal antibody. (Heat-induced epitope retrieval by 1mM EDTA in 10mM Tris, pH8.5, 120°C for 3min, [TA804059])



Immunohistochemical staining of paraffin-embedded Human tonsil within the normal limits using anti-C14orf166 mouse monoclonal antibody. (Heat-induced epitope retrieval by 1mM EDTA in 10mM Tris, pH8.5, 120°C for 3min, [TA804059])